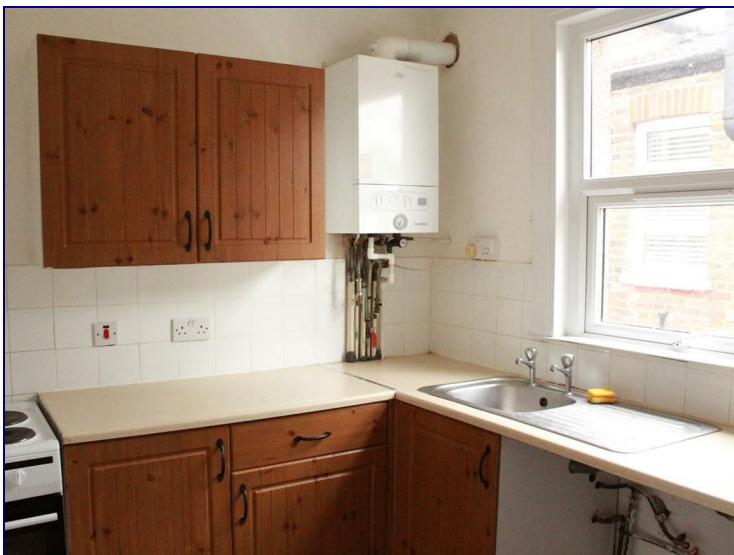


Handsworth Road, London, N17 6DE




£1,350 PCM

LARGE TWO BEDROOM MAISONETTE. Boasting from a HUGE RECEPTION, two double bedrooms, separate w/c. Excellent location and not one to be missed. OFFERED PART FURNISHED.

CALL NOW TO BOOK YOUR VIEWING



Energy Efficiency Rating		
	Current	Potential
<i>Very energy efficient - lower running costs</i>		
(92 plus) A		
(81-91) B		
(69-80) C		
(55-68) D		
(39-54) E		
(21-38) F		
(1-20) G		
<i>Not energy efficient - higher running costs</i>		
England & Wales	EU Directive 2002/91/EC	

Environmental Impact (CO ₂) Rating		
	Current	Potential
<i>Very environmentally friendly - lower CO2 emissions</i>		
(92 plus) A		
(81-91) B		
(69-80) C		
(55-68) D		
(39-54) E		
(21-38) F		
(1-20) G		
<i>Not environmentally friendly - higher CO2 emissions</i>		
England & Wales	EU Directive 2002/91/EC	