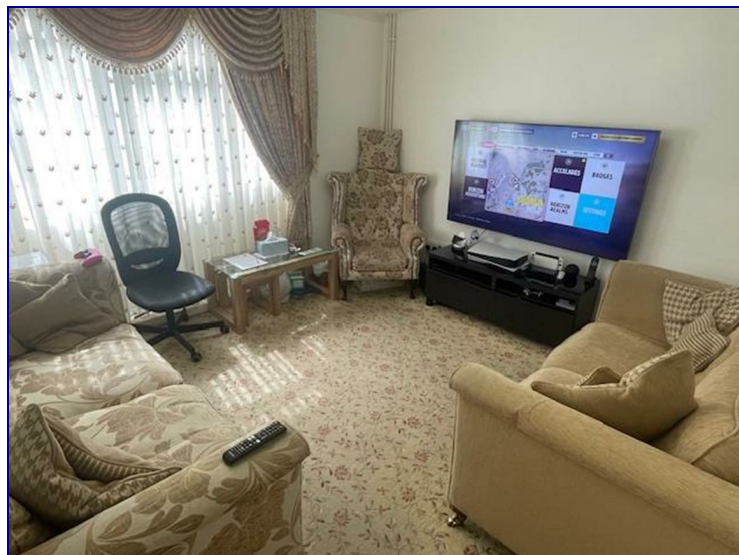


Northumberland Park, London, N17 0TQ




£2,600

Kings Group are delighted to offer this 4 bedroom townhouse in Thornley Close. This unfurnished property compromises a ground floor single bedroom, W/C, modern kitchen and conservatory then going up to the first floor which has a spacious reception room, 3 piece bathroom and single bedroom. Finally to the second floor which has 2 double bedrooms. Tenants will also benefit from a small garden and residents parking.

Located close by to Northumberland Park station and Tottenham High Road boasting great transport links around London as well as many local shops/amenities.

Contact our Tottenham office now to book in a viewing!



Energy Efficiency Rating		
	Current	Potential
Very energy efficient - lower running costs		
(92 plus) A		
(81-91) B		
(69-80) C		
(55-68) D		
(39-54) E		
(21-38) F		
(1-20) G		
Not energy efficient - higher running costs		
England & Wales	EU Directive 2002/91/EC	

Environmental Impact (CO ₂) Rating		
	Current	Potential
Very environmentally friendly - lower CO ₂ emissions		
(92 plus) A		
(81-91) B		
(69-80) C		
(55-68) D		
(39-54) E		
(21-38) F		
(1-20) G		
Not environmentally friendly - higher CO ₂ emissions		
England & Wales	EU Directive 2002/91/EC	