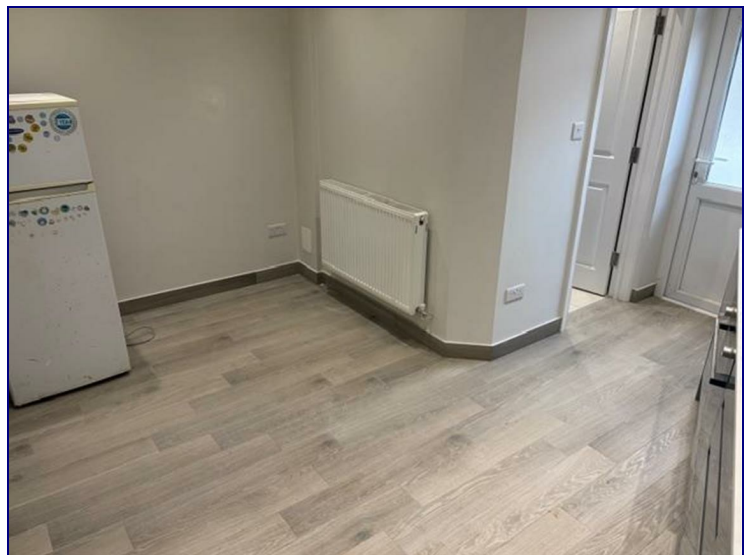
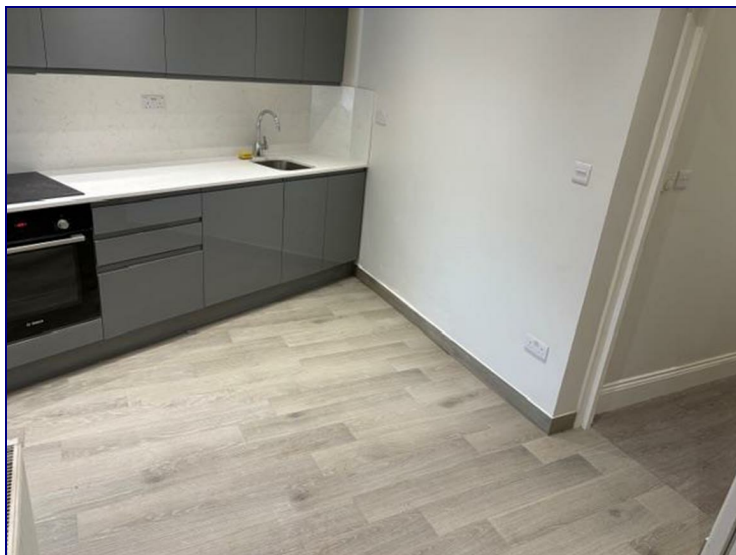


**51 Moorefield Road, London, N17 6PU**



**£1,500**

Kings Group are delighted to offer this ground floor flat on Moorefield Road. This unfurnished property has been recently refurbished throughout boasting an open plan kitchen and living area, double bedroom, 3 piece bathroom and a small garden. Conveniently located a few seconds away from Bruce Grove station benefitting from great transport links around London as well as being surrounded by many local shops and amenities. Contact our Tottenham office now to book in a viewing!



Energy Efficiency Rating		
	Current	Potential
Very energy efficient - lower running costs		
(92 plus) A		
(81-91) B		
(69-80) C		
(55-68) D		
(39-54) E		
(21-38) F		
(1-20) G		
Not energy efficient - higher running costs		
England & Wales	EU Directive 2002/91/EC	

Environmental Impact (CO <sub>2</sub> ) Rating		
	Current	Potential
Very environmentally friendly - lower CO <sub>2</sub> emissions		
(92 plus) A		
(81-91) B		
(69-80) C		
(55-68) D		
(39-54) E		
(21-38) F		
(1-20) G		
Not environmentally friendly - higher CO <sub>2</sub> emissions		
England & Wales	EU Directive 2002/91/EC	

