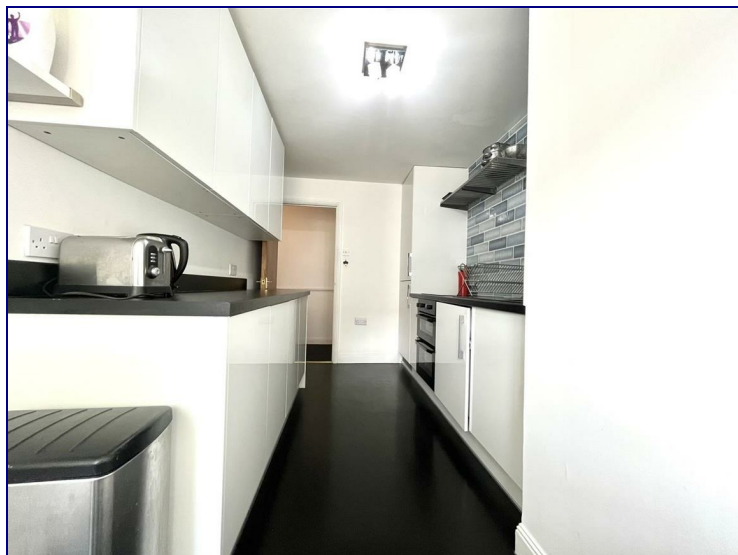
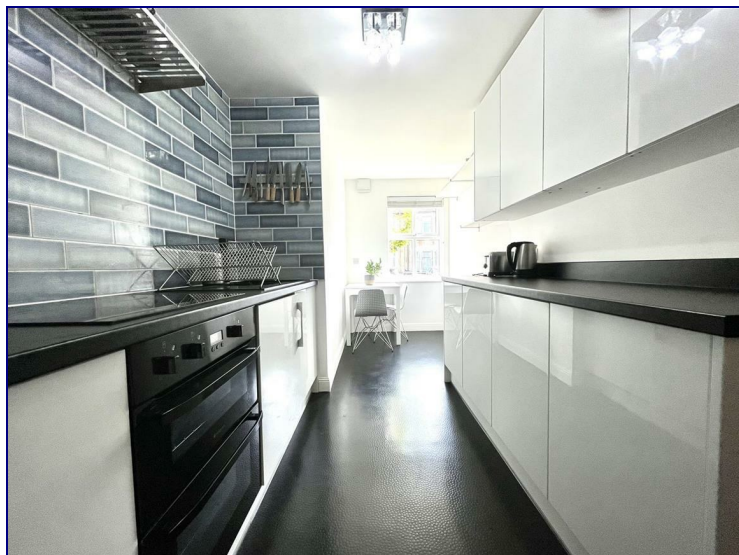


**49 Derby Road, Enfield, EN3 4DB**



**£1,400 PCM**

One Bedroom Ground Floor Apartment, Available 2nd October.

Occupants will benefit from a spacious separate lounge, modern kitchen/diner with integrated appliances, double bedroom with two fitted wardrobes and a three piece bathroom suite. Additional benefits are secure entry and secure parking.

Offered Part Furnished.

Located within walking distance to Southbury Road Rail Station and local amenities. This property also has easy access to the A10 giving great access to surrounding areas.





