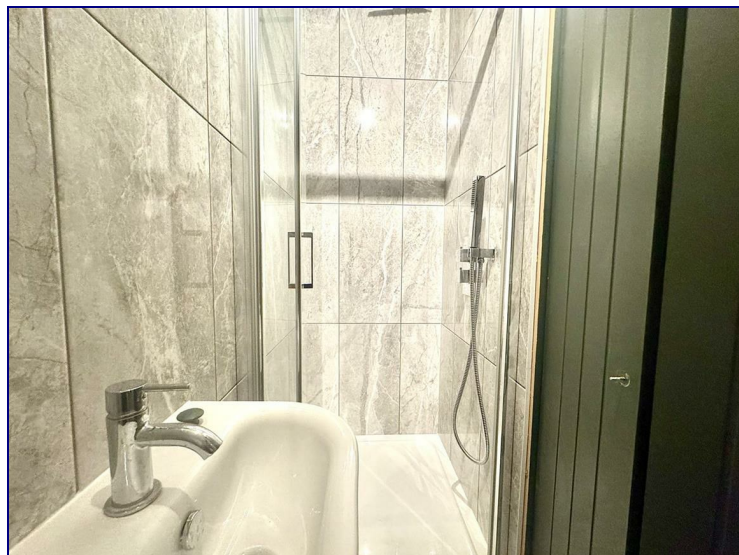
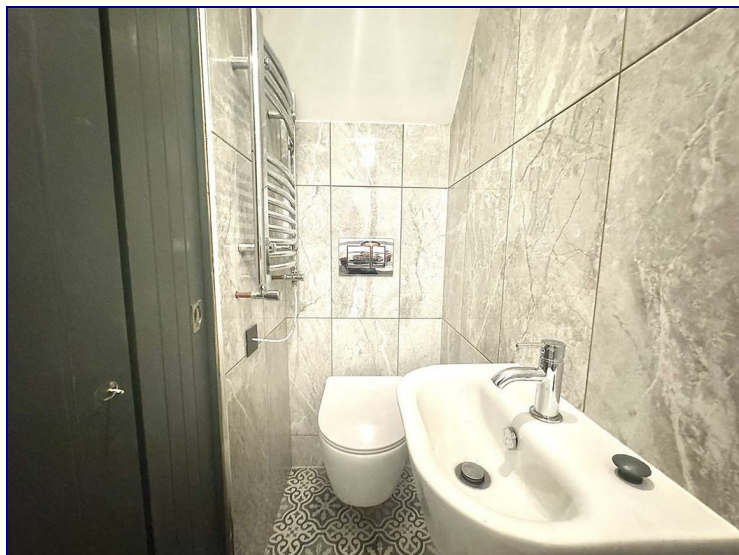


**Soham Road, Enfield, EN3 6HD**



**£980**

**\*\*ROOM TO LET - ALL BILLS INCLUDED - PRIVATE SHOWER ROOM\*\***

Occupants will benefit from a first floor double bedroom with a private shower room. This room is offered furnished with brand new furniture with a television.

The communal areas include a kitchen/dining area with newly fitted appliances, garden for all residents and communal storage.

Bills which are included within the rent are Council Tax, Water, Gas, Electric and Broadband.

Parking is available on street. In addition, the property is located within moments walk to Enfield Lock Rail Station. Local shops and amenities are also within easy reach.





