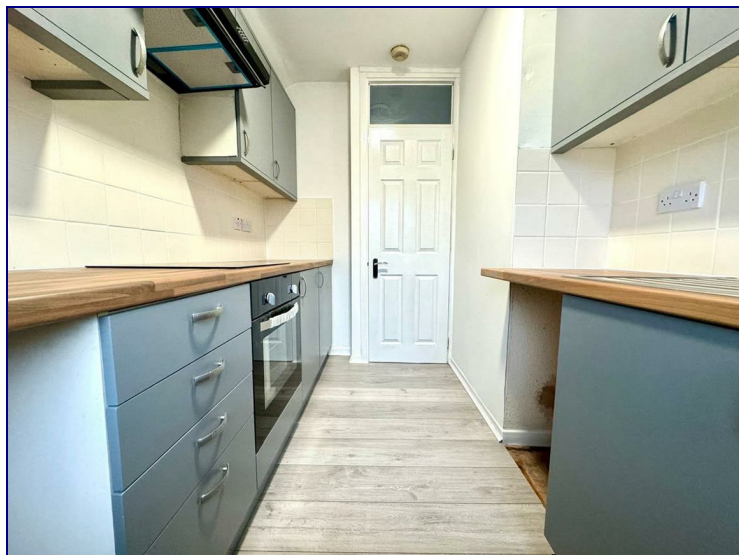


Gough Road, Enfield, EN1 3QL



£1,450 PCM

Top Floor One Bedroom Maisonette with Private Garden.
Available Now.

A bright and well-presented top floor one bedroom maisonette which is ready to move into immediately. The property offers a spacious lounge, a modern fully fitted kitchen with appliances, a double bedroom, three-piece bathroom suite. Further benefits include direct access to a private garden and on-street parking.

Ideally located within walking distance of Hertford Road, offering a wide range of shops, restaurants, and local amenities. The property is also conveniently positioned close to Southbury Rail Station and provides excellent access to surrounding areas via the A10 and M25.

Image of garden due to be added shortly.



