



Bury Street, N9 7JN
London

kings
GROUP



kings
GROUP

Bury Street, N9 7JN

- Kings Are Pleased To Present This
- Three Bedroom Terraced House
- Victorian Build
- Two Reception Rooms
- Ground Floor Bathroom & First Floor WC
- Gas Central Heating & Double Glazing
- 37ft Rear Garden
- Close Proximity To Edmonton Green Station
- Chain Free
- Council Tax Band C

Offers Over £400,000



KINGS are pleased to present this RECENTLY REFURBISHED Three Bedroom Terraced House available with NO ONWARD CHAIN. This spacious bay fronted Victorian built property features TWO RECEPTION ROOMS, a MODERN FITTED KITCHEN, a refitted ground floor bathroom and an additional first floor WC. Further benefits include a 37FT REAR GARDEN, double glazing and gas central heating.

Bury Street is just off Hertford Road situated within easy reach of Edmonton Green and it's vast selection of shops, restaurants and leisure facilities, the property also provides easy access to bus routes directly outside and road links such as the A10. We feel this property would suit first time buyers, family movers or investors alike.

Council Tax Band C

Construction Type - Standard (Brick, Tile)

Flood Risk - Rivers & Seas: Very Low, Surface Water: Very Low

ENTRANCE HALLWAY

RECEPTION ROOM 10'10 x 12'6 (3.30m x 3.81m)

RECEPTION / KITCHEN 14'1 x 17'5 (4.29m x 5.31m)

BATHROOM 7'9 x 4'8 (2.36m x 1.42m)

FIRST FLOOR LANDING

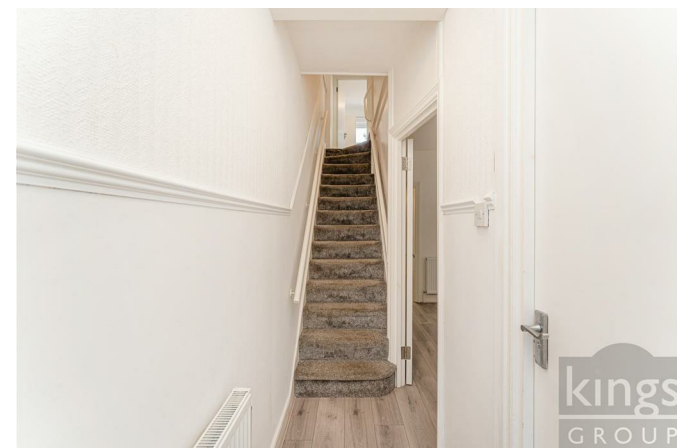
BEDROOM ONE 14'1 x 12'6 (4.29m x 3.81m)

BEDROOM TWO 8'8 x 10'7 (2.64m x 3.23m)

BEDROOM THREE 7'8 x 8'2 (2.34m x 2.49m)

WC 4'5 x 3'4 (1.35m x 1.02m)

GARDEN 37'0 approx (11.28m approx)





kings
GROUP



kings
GROUP



