



Pycroft Way, N9 9XZ
London



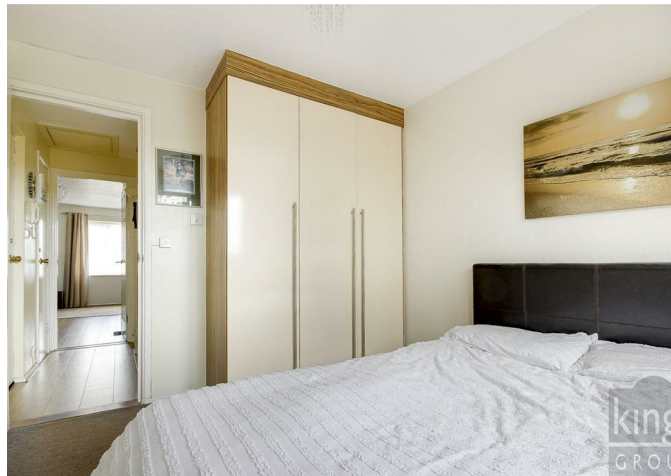


king
GROU

Pycroft Way, N9 9XZ

- Kings Are Pleased To Present This
- One Bedroom Flat
- Situated On The Second Floor
- 15ft Lounge/Diner & Semi Open Plan Kitchen
- Loft Storage & Double Glazed Windows
- Residents Allocated Parking
- 958 Year Lease
- Service Charge £1,461.06pa, Ground Rent £0pa
- Walking Distance to Silver Street Train Station
- Council Tax Band B

£215,000



KINGS are pleased to present this One Bedroom flat situated on the second floor of a purpose built development, available with an EXTENDED 958 YEAR LEASE. The well presented property features ALLOCATED PARKING, well kept communal grounds, a semi open plan kitchen, a 15FT LOUNGE/DINER, LOFT ACCESS for storage and DOUBLE GLAZED WINDOWS.

Located only moments away from the lovely Pymmes Park, it is also within WALKING DISTANCE of North Middlesex Hospital and Silver Street train station with a regular service to the city. There is also good access to the A406 North Circular Road. The property is situated within close proximity to Fore Street with all the shops, restaurants and amenities it has to offer making this an IDEAL FIRST TIME BUY or as a sound investment.

Council Tax Band B

Lease Remaining - 958 Years Remaining (999 years from 1 February 1984)

Service Charge - £1,461.06 Per Annum/£121.75 Per Month

Ground Rent - £0 Per Annum

Flood Risk - Rivers & Seas: No Risk, Surface Water: Very Low

Construction Type - Standard Construction (Brick, Tile)



ENTRANCE HALL

LOUNGE/DINER 15'7 x 13' (4.75m x 3.96m)

KITCHEN 7'3 x 5'11 (2.21m x 1.80m)

BEDROOM 10'8 x 9'1 (3.25m x 2.77m)

SHOWER ROOM 7'3 x 5'11 (2.21m x 1.80m)

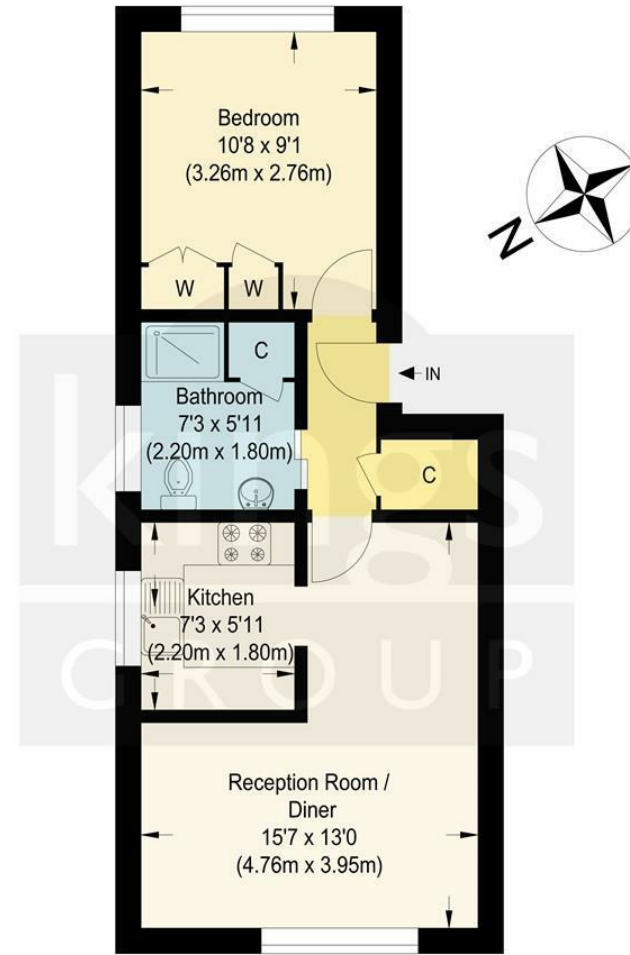
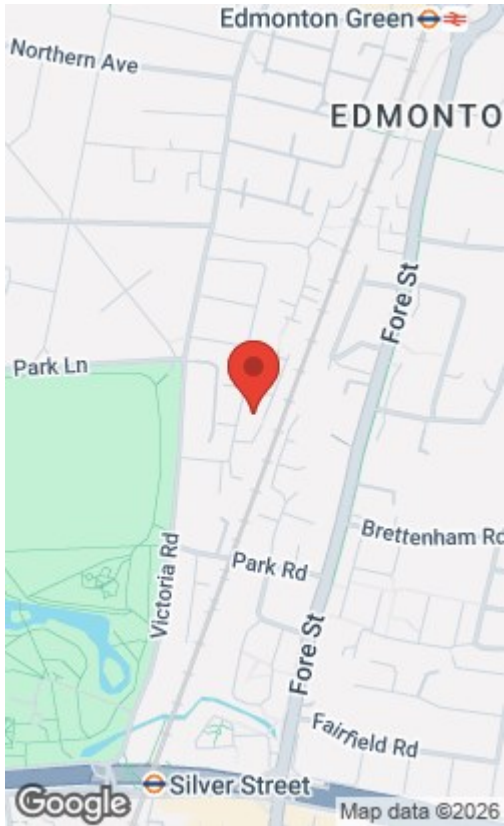


king
GROU



king
GROU

Energy Efficiency Rating		Environmental Impact (CO ₂) Rating	
Current	Potential	Current	Potential
Very energy efficient - lower running costs		Very environmentally friendly - lower CO ₂ emissions	
(92 plus) A		(92 plus) A	
(81-91) B		(81-91) B	
(69-80) C		(69-80) C	
(55-68) D		(55-68) D	
(39-54) E		(39-54) E	
(21-38) F		(21-38) F	
(1-20) G		(1-20) G	
Not energy efficient - higher running costs		Not environmentally friendly - higher CO ₂ emissions	
England & Wales	EU Directive 2002/91/EC	England & Wales	EU Directive 2002/91/EC



Pycroft Way, N9

Approximate Gross Internal Floor Area : 35.90 sq m / 386.42 sq ft
 Illustration for identification purposes only, measurements are approximate, not to scale.

THE PROPERTY MISDESCRIPTIONS ACT 1991. The agent has not tested any apparatus, equipment, fixtures or services and so cannot verify that they are in working order, or fit for the purpose. References to the Tenure of a property are based on information supplied by the vendor. The agent has not had sight of the Title documents. A buyer is advised to obtain verification from their Solicitor or Surveyor. Note: These details are correct at time of going to press.

6 Church Street, Edmonton, London, N9 9DX

T: 02083500100

E:

www.kings-group.net

