



Kendal Gardens, N18 1NF  
London





Kings  
GROUP

# Kendal Gardens, N18 1NF

- Kings Are Please To Present This
- Four/Five Bedroom End Of Terrace House
- Extended 1930's Build
- Off Street Parking
- Two Reception Rooms
- Ground Floor Bedroom/Reception Three
- Modern Kitchen & Three Bathrooms
- 27ft Garden With Side Access
- Chain Free
- Council Tax Band D

£550,000



KINGS are please to present this EXTENDED Four/Five Bedroom End Of Terrace House with OFF STREET PARKING situated in a Cul-De-Sac of a prime N18 LOCATION. This well presented CHAIN FREE 1930's built family home benefits from TWO RECEPTION ROOMS leading to a modern kitchen, an additional THIRD RECEPTION/FIFTH BEDROOM, and a ground floor shower room.

Upstairs, there a first floor bathroom and an ENSUITE to the master loft bedroom for practicality. Externally there is a 27ft rear garden with a sheltered patio area and SIDE ACCESS. Double glazing throughout and gas central heating ensure comfort and efficiency.

The bay fronted property is conveniently nestled between a range of popular schools and local shops with Pymmes Park and North Middlesex Hospital being just moments away. Transport links are provided in the form of the A10 and A406 access whilst Silver Street Station keeps you connected to the city.

Council Tax Band D  
Construction Type - Standard (Brick, Tile)  
Flood Risk - Rivers & Seas: Very Low, Surface Water: Very low

**ENTRANCE HALLWAY**

**RECEPTION ROOM ONE** 13'5 x 12'1 (4.09m x 3.68m)

**RECEPTION ROOM TWO** 12'2 x 11'5 (3.71m x 3.48m)

**KITCHEN** 10'6 x 8'4 (3.20m x 2.54m)

**RECEPTION THREE/BEDROOM** 14'5 x 8'1 (4.39m x 2.46m)

**GROUND FLOOR SHOWER ROOM** 5'5 x 4'2 (1.65m x 1.27m)

**STAIRCASE TO FIRST FLOOR LANDING**

**BEDROOM ONE** 13'6 x 11'1 (4.11m x 3.38m)

**BEDROOM TWO** 13'4 x 11'1 (4.06m x 3.38m)

**BEDROOM THREE** 10'1 x 6'4 (3.07m x 1.93m)

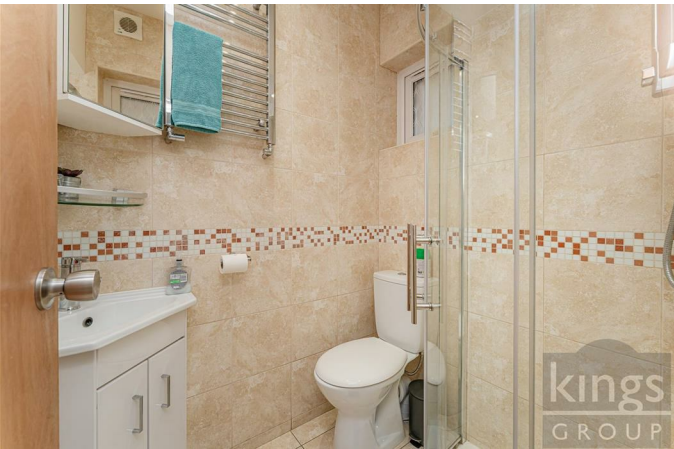
**BATHROOM** 8'9 x 6'4 (2.67m x 1.93m)

**STAIRS TO SECOND FLOOR LANDING**

**MASTER BEDROOM FOUR** 16'2 x 12'2 (4.93m x 3.71m)

**ENSUITE** 6'3 x 4'1 (1.91m x 1.24m)

**GARDEN** 27'0 x 20'0 approx (8.23m x 6.10m approx)



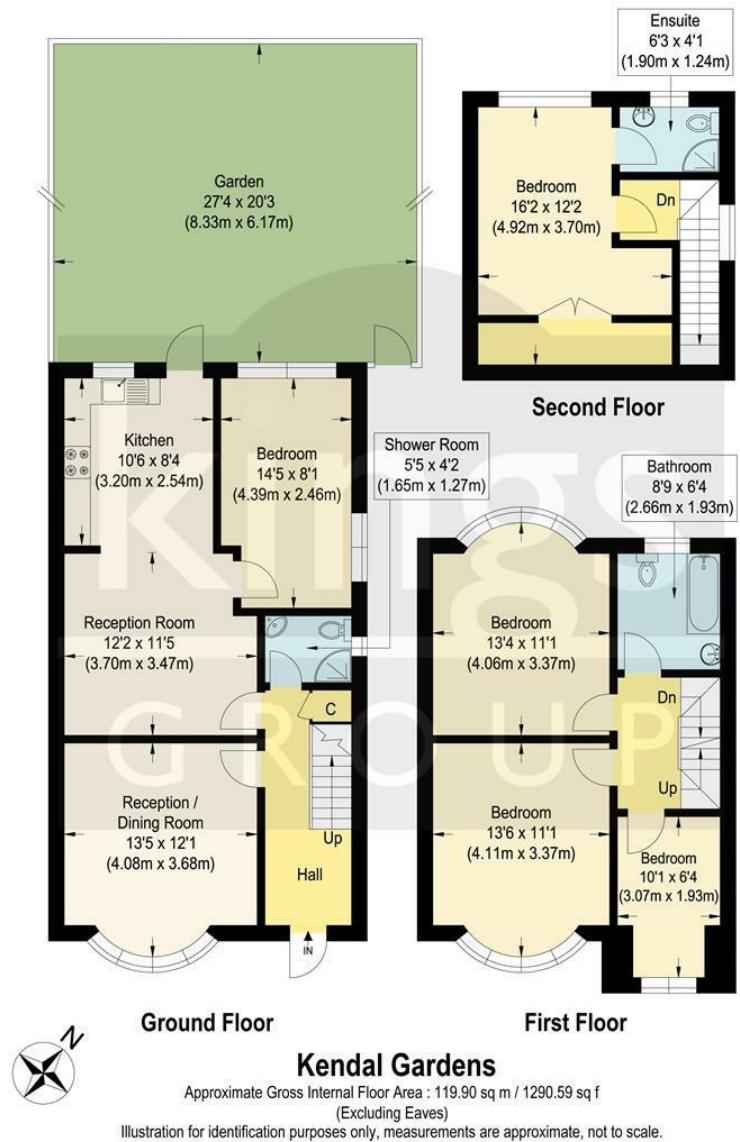
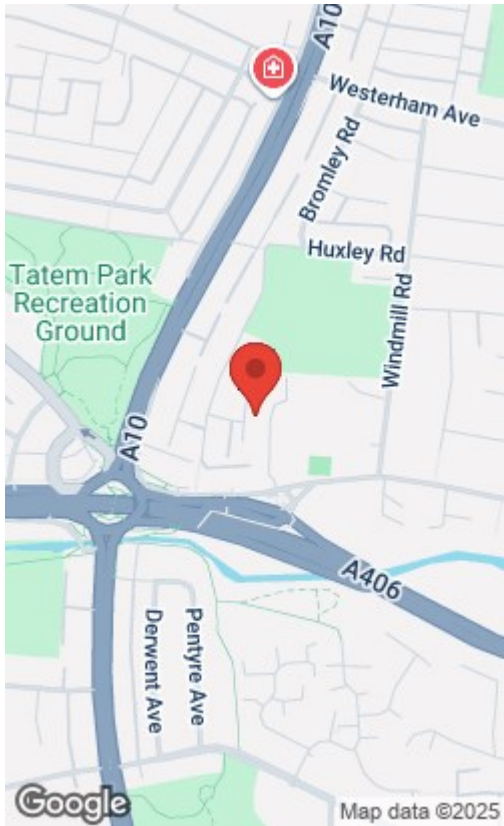
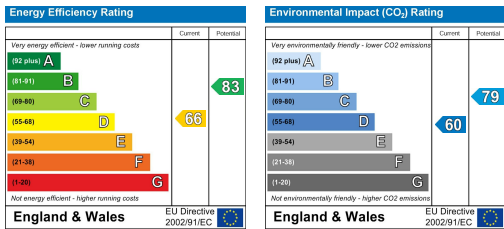


kings  
GROUP



kings  
GROUP





THE PROPERTY MISDESCRIPTIONS ACT 1991. The agent has not tested any apparatus, equipment, fixtures or services and so cannot verify that they are in working order, or fit for the purpose. References to the Tenure of a property are based on information supplied by the vendor. The agent has not had sight of the Title documents. A buyer is advised to obtain verification from their Solicitor or Surveyor. Note: These details are correct at time of going to press.

6 Church Street, Edmonton, London, N9 9DX

T: 02083500100

E:

www.kings-group.net

