



**118 Lordship Lane,  
Tottenham**

**Offers In Excess Of  
£440,000 Freehold**



# 118 Lordship Lane, Tottenham

473 High Street, Tottenham, London,  
N17 6QA

020 8801 2696  
[www.kings-group.net](http://www.kings-group.net)

- Three Bedroom House
- Freehold
- Chain Free
- Well Maintained Throughout
- Ground Floor Bathroom
- Private Rear Garden
- Double Glazed
- Excellent Location
- 12 Minutes Walk To Bruce Ground Overground Station
- EPC Rating : D

just a short distance away, making this an ideal and well-connected location.

Council Tax Band C

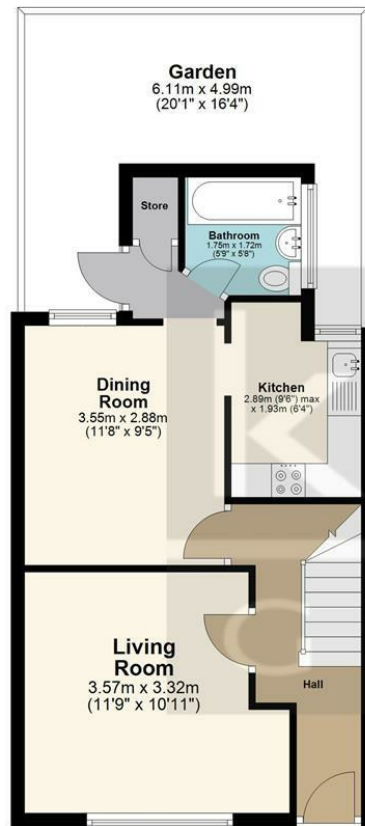
Construction Type - Standard (brick)

Flood Risk - Rivers & Seas: Very Low, Surface Water: Low

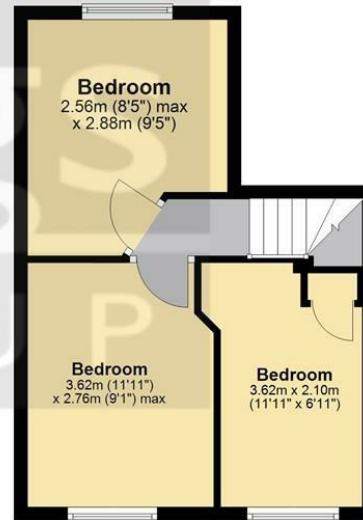
Kings Group are delighted to present this well-maintained three-bedroom terraced house, ideally positioned backing onto the highly sought-after Peabody Cottages. Well maintained throughout, the property features a bright and airy reception room with access to a private rear garden, a fitted kitchen, three well-proportioned double bedrooms, and a three-piece family bathroom suite. Combining comfort, practicality, and a desirable location, this charming home offers an excellent opportunity for first-time buyers, growing families, or investors alike.

Located in the heart of Tottenham, this property is just moments from the historic Bruce Castle Park and within close proximity to Lanchester Primary School, conveniently located at the end of the road. Bruce Grove and White Hart Lane Stations are both within easy reach, with Bruce Grove Station approximately a 12-minute walk away, offering direct trains into Liverpool Street Station in around 20 minutes. The property also benefits from the ongoing regeneration of the surrounding area, alongside excellent bus routes and transport links providing easy access to nearby areas and Central London. A variety of local shops, amenities, and well-regarded schools are also

## Ground Floor



## First Floor



Total area: approx. 71.1 sq. metres (765.2 sq. feet)

All measurements have been taken as a guide to prospective buyers only and are not precise. This plan is for illustrative purposes only and no responsibility for any error, omission or misstatement. The services, systems and appliances shown have not been tested and no guarantee as to their operability or efficiency can be given. Measurements may have been taken from the widest area and may include wardrobe/cupboard space. No guarantee is given to any measurements including total areas. Buyers are advised to take their own measurements.

© @modephotouk | www.modephoto.co.uk  
Plan produced using PlanUp. □

**Lordship Lane**



THE PROPERTY MISDESCRIPTIONS ACT 1991. The agent has not tested any apparatus, equipment, fixtures or services and so cannot verify that they are in working order, or fit for the purpose. References to the Tenure of a property are based on information supplied by the vendor. The agent has not had sight of the Title documents. A buyer is advised to obtain verification from their Solicitor or Surveyor



473 High Street, Tottenham, London,  
N17 6QA

020 8801 2696

[www.kings-group.net](http://www.kings-group.net)



[Zoopla.co.uk](http://Zoopla.co.uk)



[rightmove.co.uk](http://rightmove.co.uk)  
The UK's number one property website

