




www.kings-group.net


248 Hoe Street
Walthamstow E17 3AX
Tel: 020 8521 1122

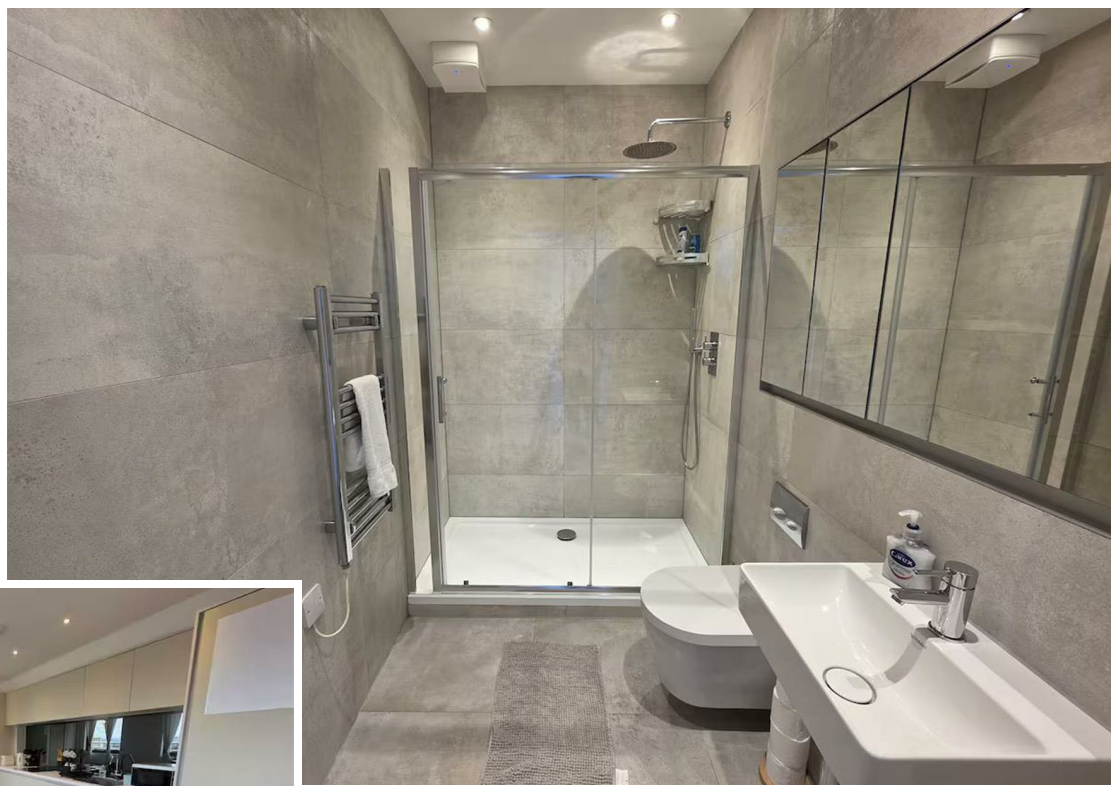
Planetree Path, London, E17 7FW
£3,000

This modern and chic two bedroom apartment offers a perfect blend of style, comfort, and convenience, nestled in a prime location, just a 2-minute stroll from Walthamstow Central Station. As you step inside, you're greeted by an abundance of natural light that streams through the large windows, creating an inviting and airy atmosphere. The open-plan living space seamlessly connects the living, dining, and kitchen areas, providing a spacious and versatile layout for your daily activities. The living room is a haven of relaxation, adorned with contemporary furnishings and tasteful decor with your very own private balcony. Whether you're unwinding after a long day or entertaining friends, this space offers the perfect setting. The modern kitchen is equipped with high-end Bosch appliances and stylish finishes, making it a pleasure to prepare meals and entertain guests. The bedroom boasts ample space and a large window that allows plenty of natural light. The carefully chosen color palette and thoughtful design create a soothing ambiance, ensuring a restful night's sleep. The sleek bathroom features modern fixtures and a clean design, to enhance your daily routine. With a commitment to quality, every detail in this apartment has been carefully considered to enhance your overall living experience.



Energy Efficiency Rating		
	Current	Potential
Very energy efficient - lower running costs		
(92 plus) A		
(81-91) B		
(69-80) C		
(55-68) D		
(39-54) E		
(21-38) F		
(1-20) G		
Not energy efficient - higher running costs		
England & Wales	EU Directive 2002/91/EC	

Environmental Impact (CO ₂) Rating		
	Current	Potential
Very environmentally friendly - lower CO2 emissions		
(92 plus) A		
(81-91) B		
(69-80) C		
(55-68) D		
(39-54) E		
(21-38) F		
(1-20) G		
Not environmentally friendly - higher CO2 emissions		
England & Wales	EU Directive 2002/91/EC	







Associated Offices in London, Essex and Hertfordshire
Kings Head Office Tudor Lodge, Burton Lane, Goffs Oak, Hertfordshire EN7 6SY Tel: 01707-872000

