



**[www.kings-group.net](http://www.kings-group.net)**

248 Hoe Street  
Walthamstow E17 3AX  
Tel: 020 8521 1122

**Williams Avenue, London, E17 5HX**  
**£1,900**



Kings Group Lettings Agents are proud to present this freshly decorated end of terrace three bedroom house. Located in a quiet location, this property sits 0.9 miles away from Blackhorse Road Station on the Victoria Line.

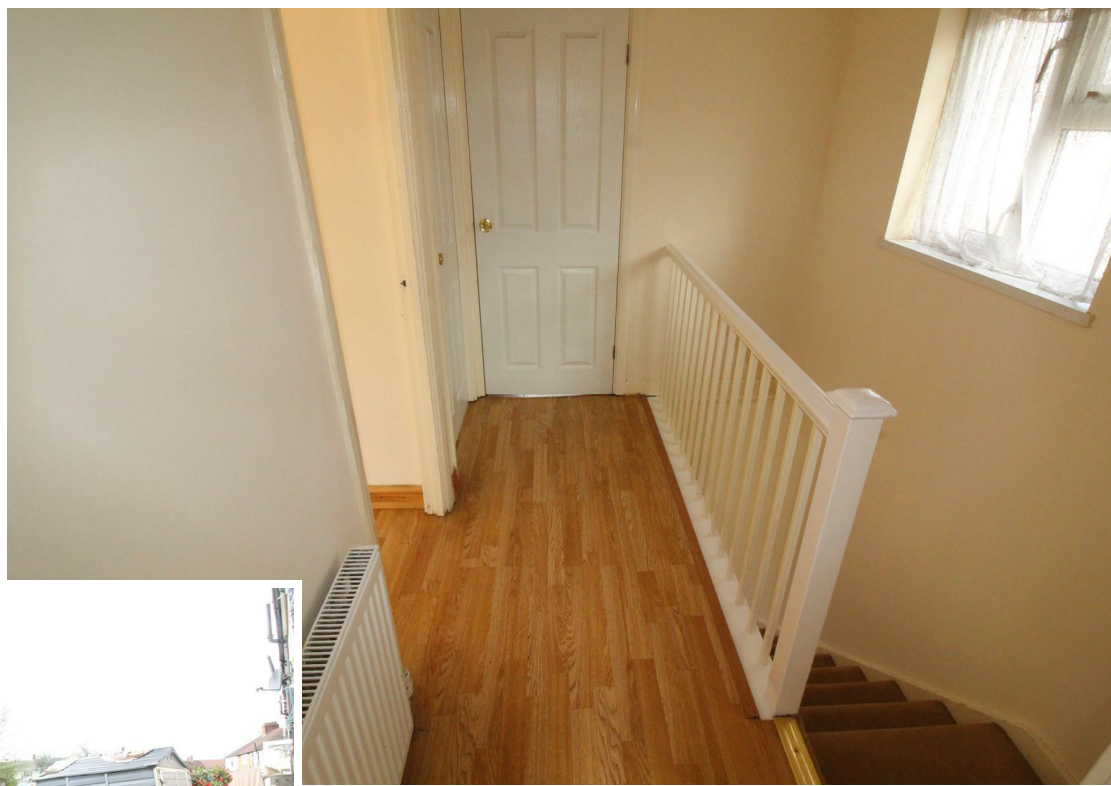
The house itself is presented in fantastic condition, having gone through a full makeover including renewed paint work and overhauled floorboards. The property includes two spacious double bedrooms, a single bedroom, one expansive bathroom, two immaculate receptions, an enormous garden space accommodated with two sheds, an decent sized kitchen and access to two off road parking spaces. In addition, the property comprises gas central heating. **\*AVAILABLE IMMEDIATELY\***.



Energy Efficiency Rating		
	Current	Potential
Very energy efficient - lower running costs		
(92 plus) A		
(81-91) B		
(69-80) C		
(55-68) D		
(39-54) E		
(21-38) F		
(1-20) G		
Not energy efficient - higher running costs		
England & Wales	EU Directive 2002/91/EC	

Environmental Impact (CO <sub>2</sub> ) Rating		
	Current	Potential
Very environmentally friendly - lower CO2 emissions		
(92 plus) A		
(81-91) B		
(69-80) C		
(55-68) D		
(39-54) E		
(21-38) F		
(1-20) G		
Not environmentally friendly - higher CO2 emissions		
England & Wales	EU Directive 2002/91/EC	













Associated Offices in London, Essex and Hertfordshire  
Kings Head Office Tudor Lodge, Burton Lane, Goffs Oak, Hertfordshire EN7 6SY Tel: 01707-872000

