



www.kings-group.net

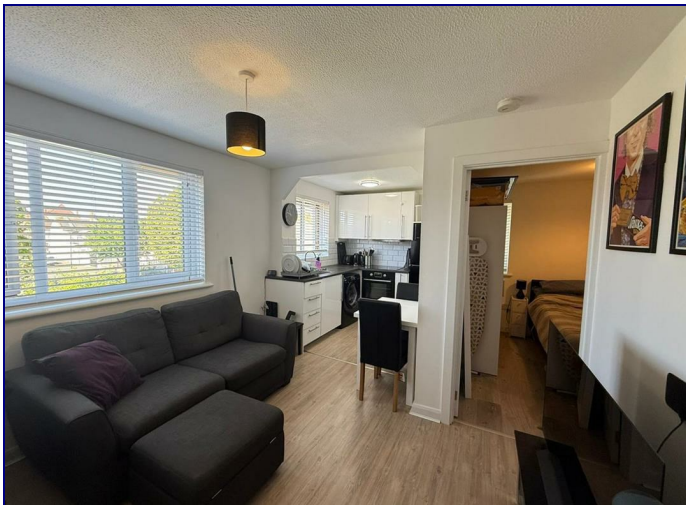
248 Hoe Street
Walthamstow E17 3AX
Tel: 020 8521 1122

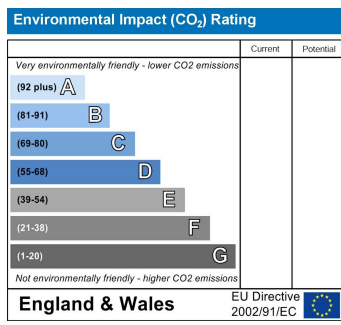
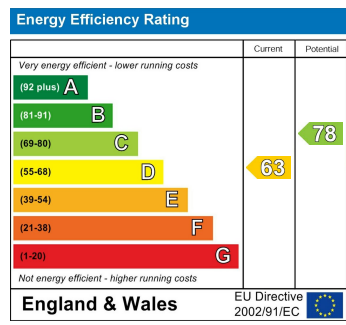
Green Pond Close, London, E17 6EF
£1,400

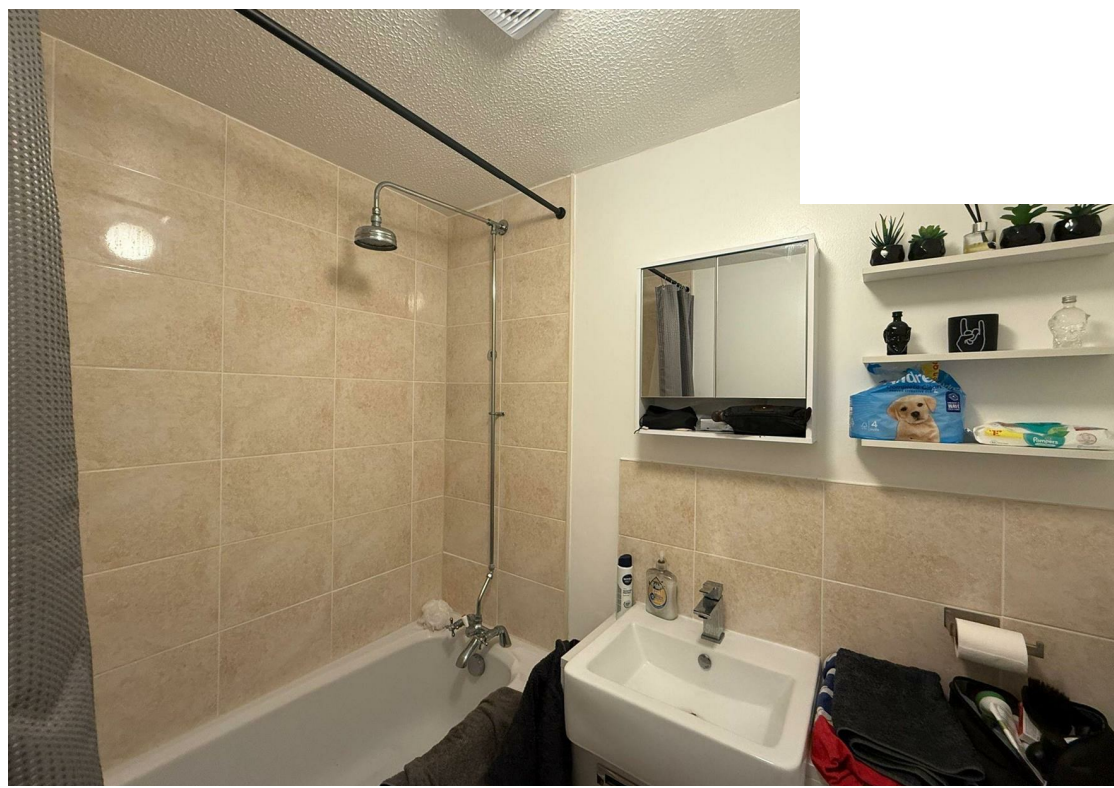
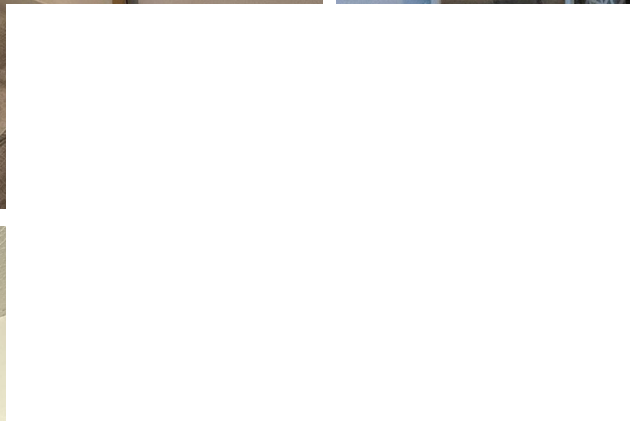
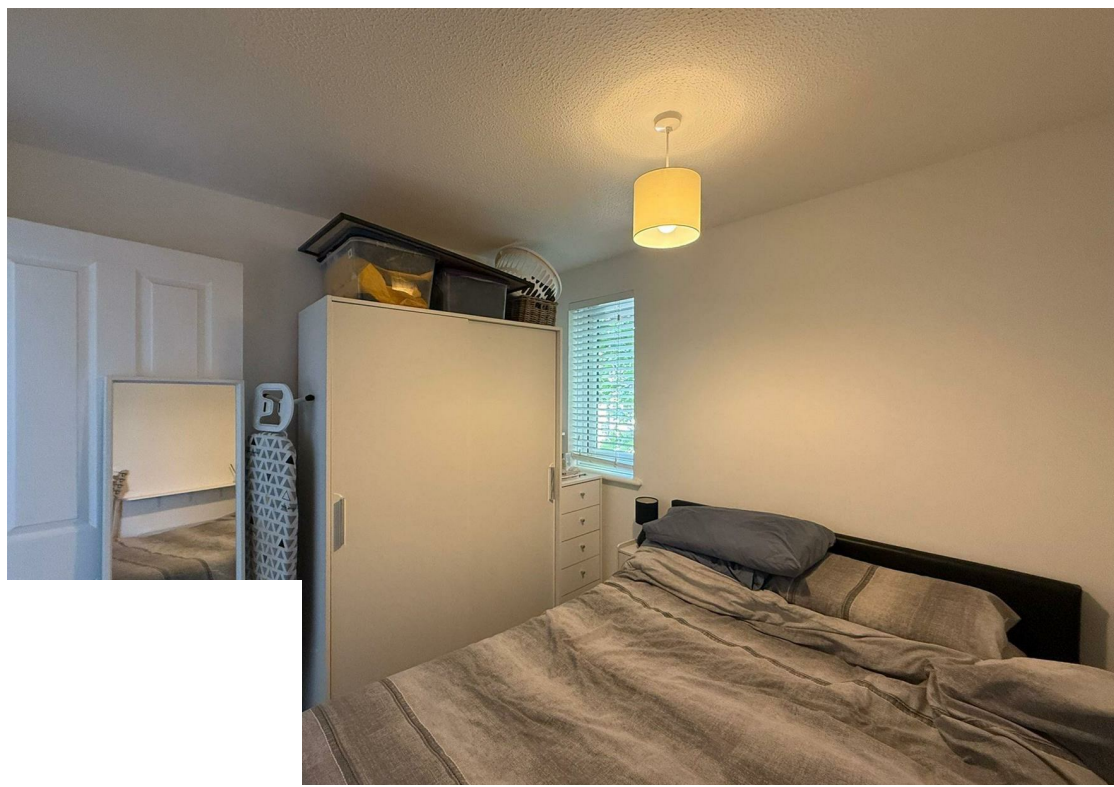
Kings Group Walthamstow are delighted to offer this delightful one-bedroom top floor flat nestled in the vibrant neighbourhood of Walthamstow. This property presents an exciting opportunity for those seeking to create their ideal living space.

The property is situated just off of Higham Hill road and has easy access to both Hillyfield Primary Academy and Whittingham Community Primary School as well as the local shops, pub and restaurants on Higham Hill road itself. A short half a mile walk and you will be on the Victoria line via Blackhorse Road as well as half a mile in the other direction and you will have access to Lea Valley Park with access to the lakes, bicycle tracks and bridle paths.

Schedule a viewing today and unlock the possibilities awaiting you in this sought-after Walthamstow gem!









Associated Offices in London, Essex and Hertfordshire
Kings Head Office Tudor Lodge, Burton Lane, Goffs Oak, Hertfordshire EN7 6SY Tel: 01707-872000

