



www.kings-group.net

248 Hoe Street
Walthamstow E17 3AX
Tel: 020 8521 1122

Queen Mary Avenue, London, E18 2FL
£1,700 Per Month


Two Bedroom, Top Floor Apartments in Queen Marys Development E18.


A very well maintained and presented two bedroom upper floor Apartment with lift access, located in the sought after Queen Mary development, well placed for South Woodford station (Central Line).

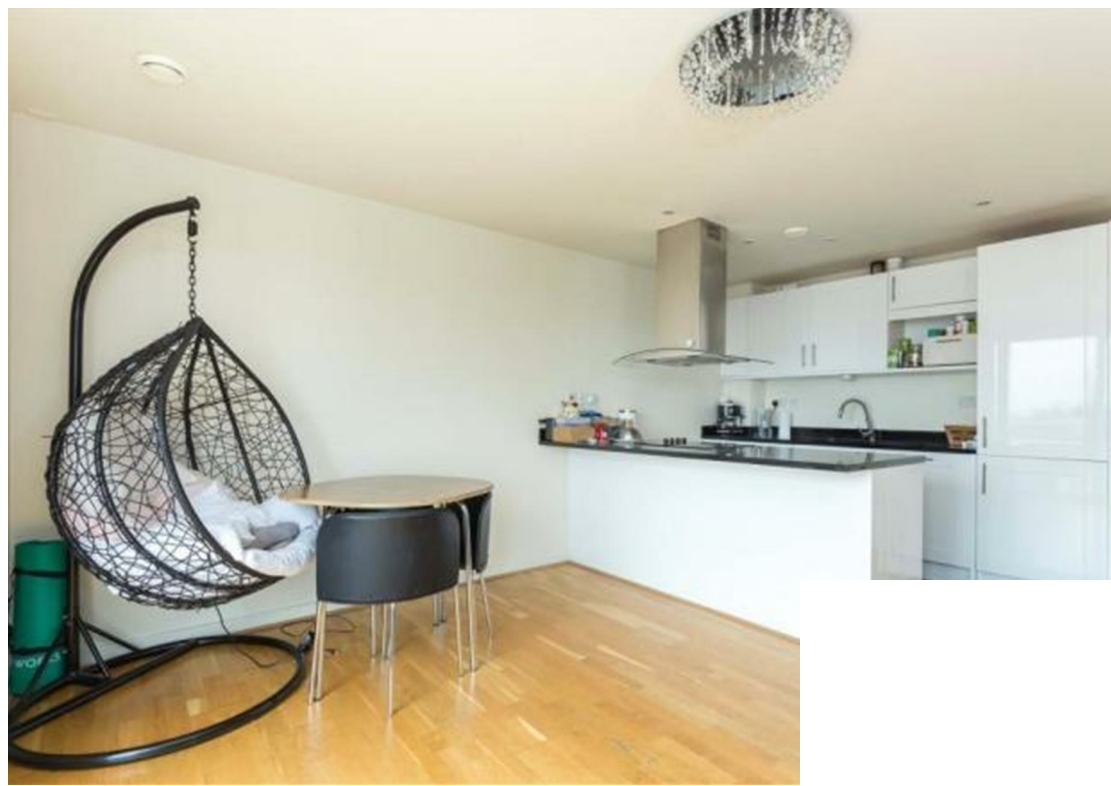
This bright apartment features an open-plan living space with fitted kitchen and patio doors leading onto a balcony. The master bedroom offers an en-suite shower room with a second bedroom with built-in wardrobe and separate family bathroom. There is also a storage cupboard off the hallway.

Apartment benefits from top floor setting, underground secure parking, lift, beautiful communal gardens and a Concierge.

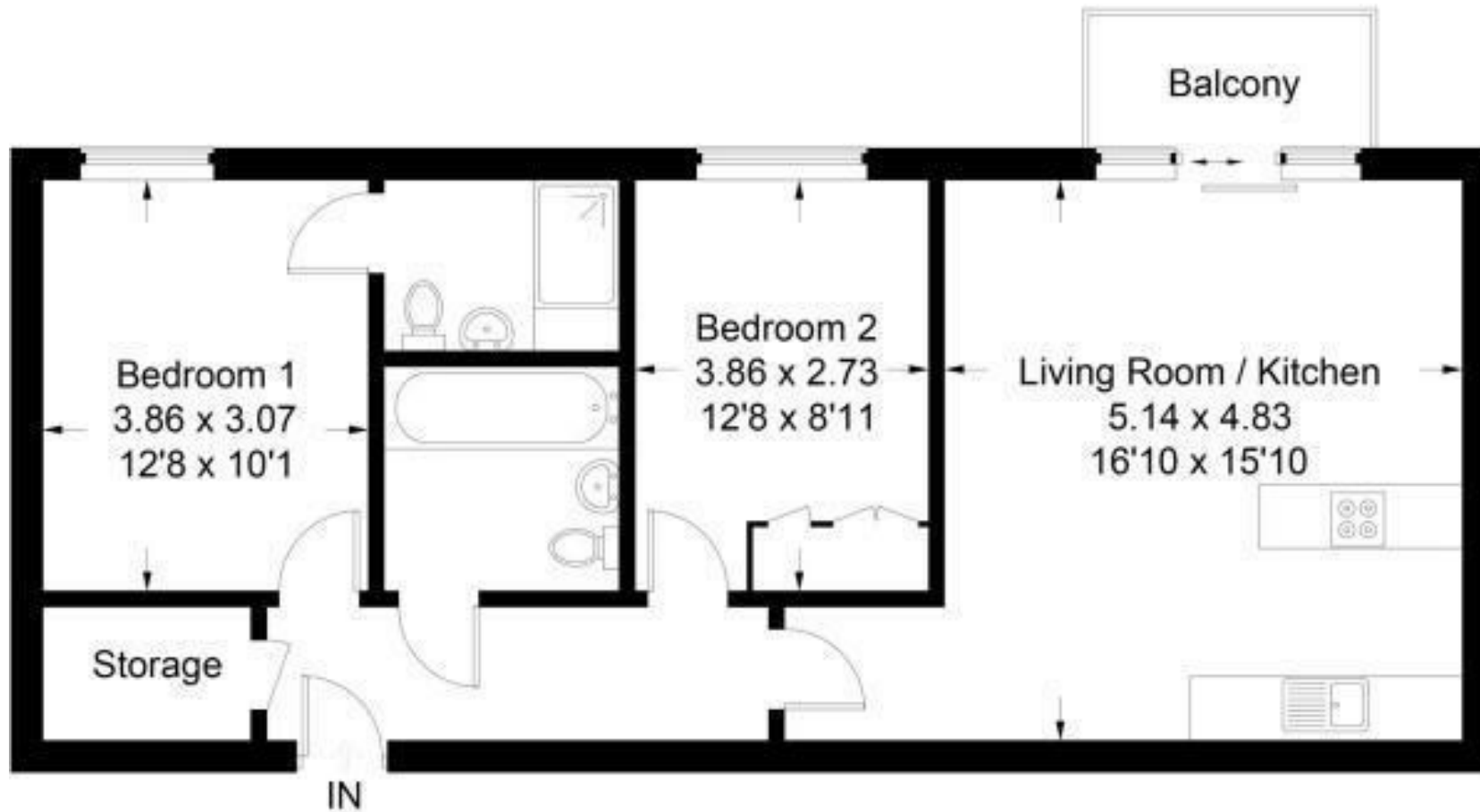


Energy Efficiency Rating		
	Current	Potential
Very energy efficient - lower running costs		
(92 plus) A		
(81-91) B		
(69-80) C		
(55-68) D		
(39-54) E		
(21-38) F		
(1-20) G		
Not energy efficient - higher running costs		
England & Wales	EU Directive 2002/91/EC	

Environmental Impact (CO ₂) Rating		
	Current	Potential
Very environmentally friendly - lower CO2 emissions		
(92 plus) A		
(81-91) B		
(69-80) C		
(55-68) D		
(39-54) E		
(21-38) F		
(1-20) G		
Not environmentally friendly - higher CO2 emissions		
England & Wales	EU Directive 2002/91/EC	



Approximate Gross Internal Area
70.1 sq m / 754 sq ft



Fourth Floor

This plan is for layout guidance only. Not drawn to scale unless stated. Windows and door openings are approximate. Whilst every care is taken in the preparation of this plan, please check all dimensions, shapes and compass bearings before making any decisions reliant upon them.



Associated Offices in London, Essex and Hertfordshire
Kings Head Office Tudor Lodge, Burton Lane, Goffs Oak, Hertfordshire EN7 6SY Tel: 01707-872000

