



www.kings-group.net

248 Hoe Street
Walthamstow E17 3AX
Tel: 020 8521 1122

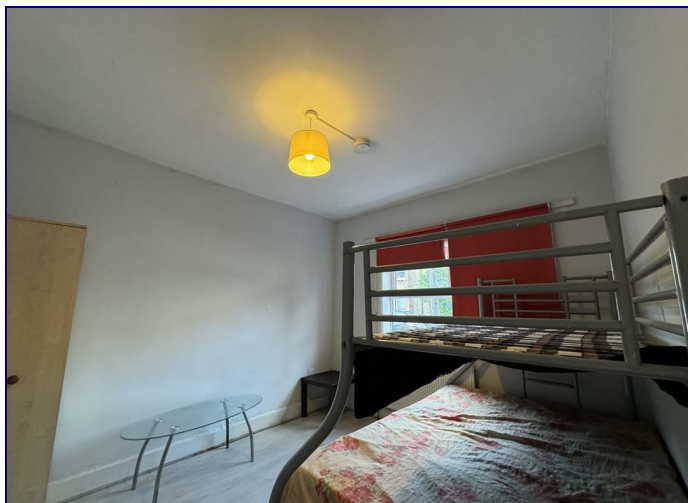
St Johns Road, E17 4JH
£2,200

A lovely family home in a brilliant area with plenty of space and a good size garden.

'This fantastic three/four bedroom house offers original features, two reception rooms and a large modern kitchen.

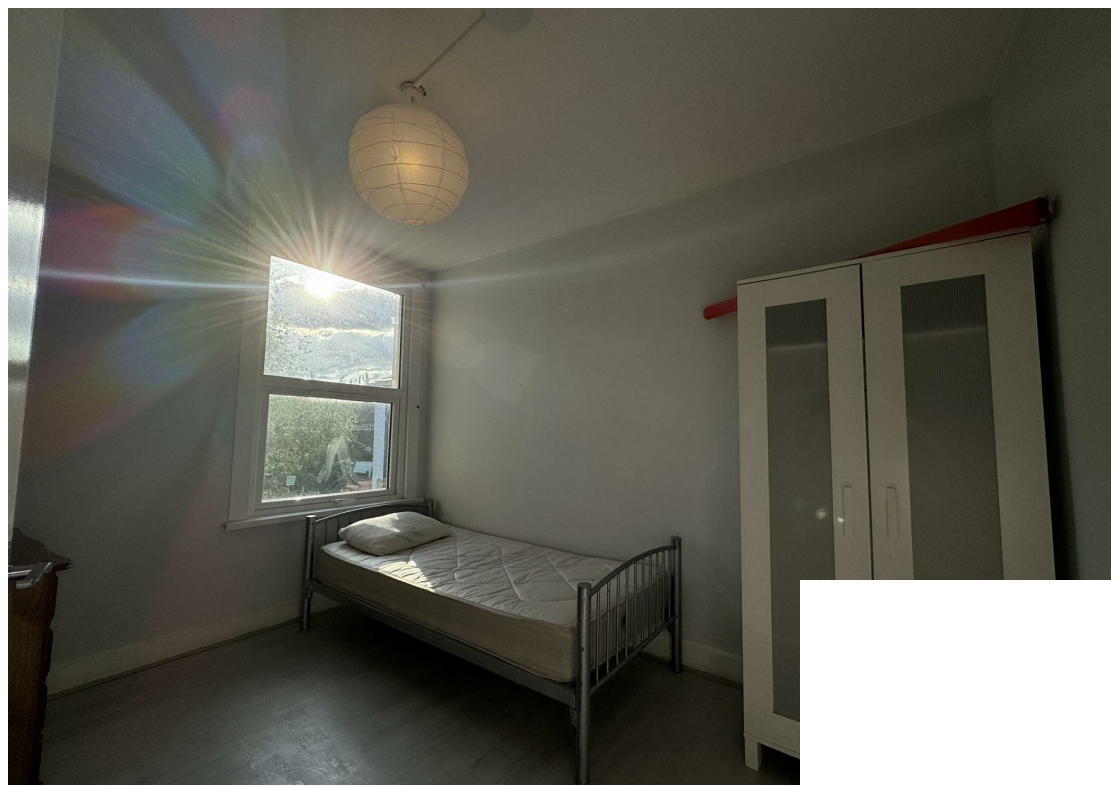
St Johns Road is moments away from the great local amenities of Walthamstow, not to mention the lovely greenery of Lloyd Park.

This is a brilliant area with lots going on for families. There's a variety of schools within walking distance, as are Lloyd Park and William Morris Gallery, Chestnuts Field, Peter May Sports Centre, Walthamstow Football Club, LRT Sports Ground and Walthamstow Feel Good Centre (with pool).



Energy Efficiency Rating		
	Current	Potential
Very energy efficient - lower running costs		
(92 plus) A		
(81-91) B		
(69-80) C		
(55-68) D		
(39-54) E		
(21-38) F		
(1-20) G		
Not energy efficient - higher running costs		
England & Wales	EU Directive 2002/91/EC	

Environmental Impact (CO ₂) Rating		
	Current	Potential
Very environmentally friendly - lower CO2 emissions		
(92 plus) A		
(81-91) B		
(69-80) C		
(55-68) D		
(39-54) E		
(21-38) F		
(1-20) G		
Not environmentally friendly - higher CO2 emissions		
England & Wales	EU Directive 2002/91/EC	





Associated Offices in London, Essex and Hertfordshire
Kings Head Office Tudor Lodge, Burton Lane, Goffs Oak, Hertfordshire EN7 6SY Tel: 01707-872000

