



Canning Square, EN1 4BT
Enfield





kings
GROUP

Canning Square, EN1 4BT

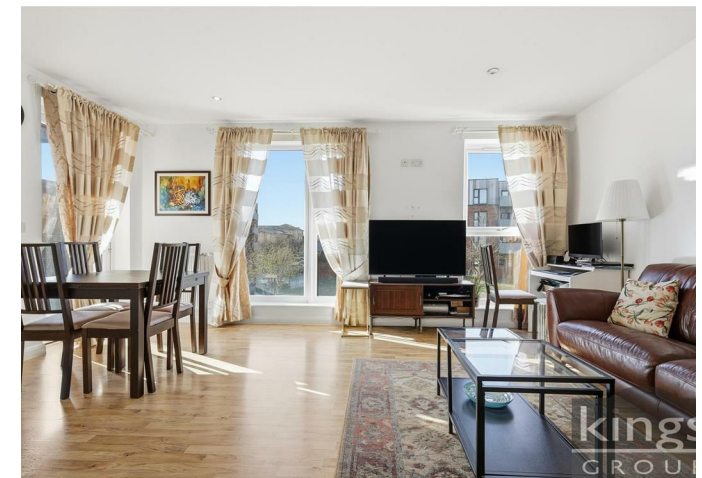
Set within one of Enfield's most sought after residential streets, this beautifully presented first floor apartment offers a perfect blend of style, space, and light. Tucked away in a quiet turning, the home boasts generously proportioned interiors, anchored by a sophisticated open plan kitchen and living area. The modern fitted kitchen features integrated appliances and ample worktop space, flowing seamlessly into the living area, which opens onto a private south facing balcony—ideal for entertaining or relaxing in the sun.

The property comprises two double bedrooms, with one benefiting from built in wardrobes, and offers abundant additional storage throughout. A three piece bathroom suite completes the interior, which is further enhanced by floor to ceiling double glazed windows that flood the home with natural light. Additional features include a secure entry phone system, allocated parking with visitor bays, a well maintained communal garden, and a secure bike shed.

Perfect for first time buyers, young families, or investors, the apartment is conveniently located within easy reach of Turkey Street Station and local bus routes, with excellent road connections via the A10, M25, and A406. Local amenities include David Lloyd Leisure Centre, while Enfield Town Centre and Retail Parks are a short drive away, offering a wide range of shopping, dining, and leisure options. Families will also value the property's location within the catchment areas of highly regarded schools, including Worcesters Primary School and Carterhatch Infant and Junior Schools.

A light filled, stylish, and turnkey home in a prime location, offering both comfort and convenience in equal measure.

Offers Over £340,000



- A Stylish First Floor Apartment Offering Two Well Proportioned Double Bedrooms
- Designated Parking Plus Guest Parking Available
- A Spacious Open Plan Living Area Complemented By a Sleek Fitted Kitchen With Built In Appliances
- Excellent Storage Throughout, Including Built In Wardrobes in the Second Bedroom
- A Popular and Well Regarded Residential Location
- Sunny South Facing Private Balcony
- Impressive Floor to Ceiling Windows, Bathing the Interior in Natural Light
- A Modern Fitted Three Piece Bathroom Suite
- A Versatile Property, Perfect for First Time Buyers, Young Families, or Investors
- Well Kept Communal Lawn Garden with Secure Bike Storage





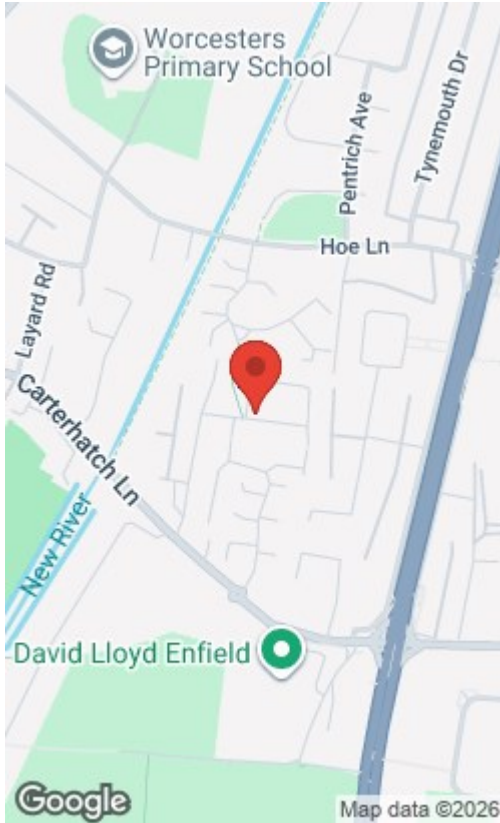
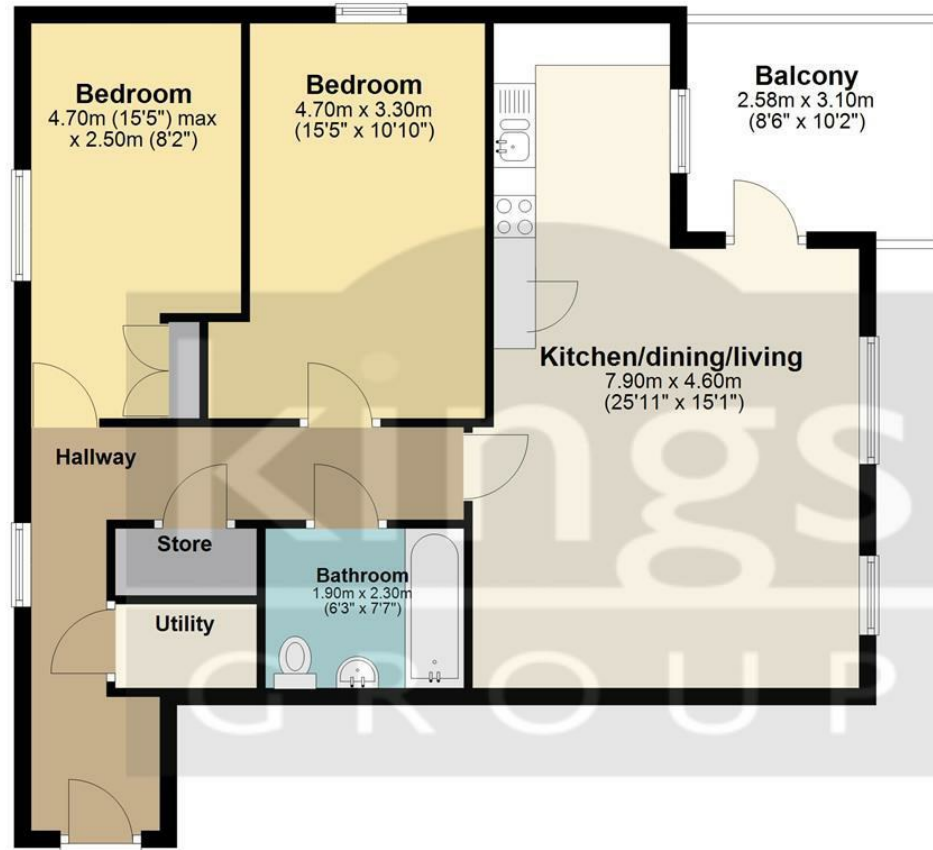


kings
GROUP



Energy Efficiency Rating		Environmental Impact (CO ₂) Rating	
Current	Potential	Current	Potential
Very energy efficient - lower running costs		Very environmentally friendly - lower CO ₂ emissions	
(92 plus) A		(92 plus) A	
(81-91) B		(81-91) B	
(69-80) C		(69-80) C	
(55-68) D		(55-68) D	
(39-54) E		(39-54) E	
(21-38) F		(21-38) F	
(1-20) G		(1-20) G	
Not energy efficient - higher running costs		Not environmentally friendly - higher CO ₂ emissions	
England & Wales		England & Wales	
EU Directive 2002/91/EC		EU Directive 2002/91/EC	

First Floor



Total area: approx. 73.8 sq. metres (794.5 sq. feet)

All measurements have been taken as a guide to prospective buyers only and are not precise. This plan is for illustrative purposes only and no responsibility for any error, omission or misstatement. The services, systems and appliances shown have not been tested and no guarantee as to their operability or efficiency can be given. Measurements may have been taken from the widest area and may include wardrobe/cupboard space. No guarantee is given to any measurements including total areas. Buyers are advised to take their own measurements.

© @modephotouk | www.modephoto.co.uk
Plan produced using PlanUp.

Mill House

THE PROPERTY MISDESCRIPTIONS ACT 1991. The agent has not tested any apparatus, equipment, fixtures or services and so cannot verify that they are in working order, or fit for the purpose. References to the Tenure of a property are based on information supplied by the vendor. The agent has not had sight of the Title documents. A buyer is advised to obtain verification from their Solicitor or Surveyor. Note: These details are correct at time of going to press.

25 Silver Street, Enfield Town, Middlesex,
EN1 3EF

T: 0208 364 4118

E:

www.kings-group.net

