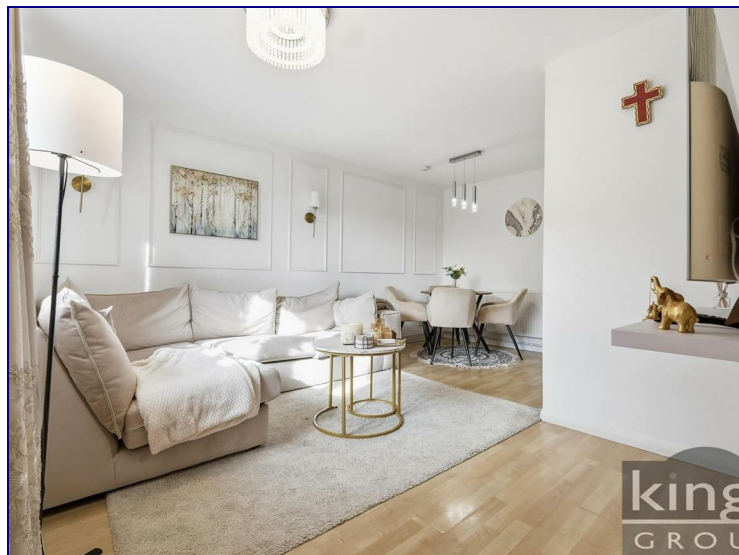
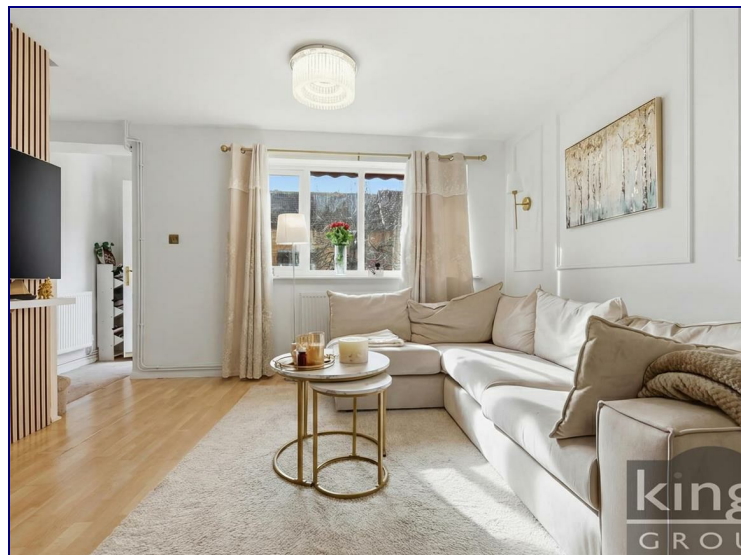


Mahon Close, Enfield, EN1 4DJ



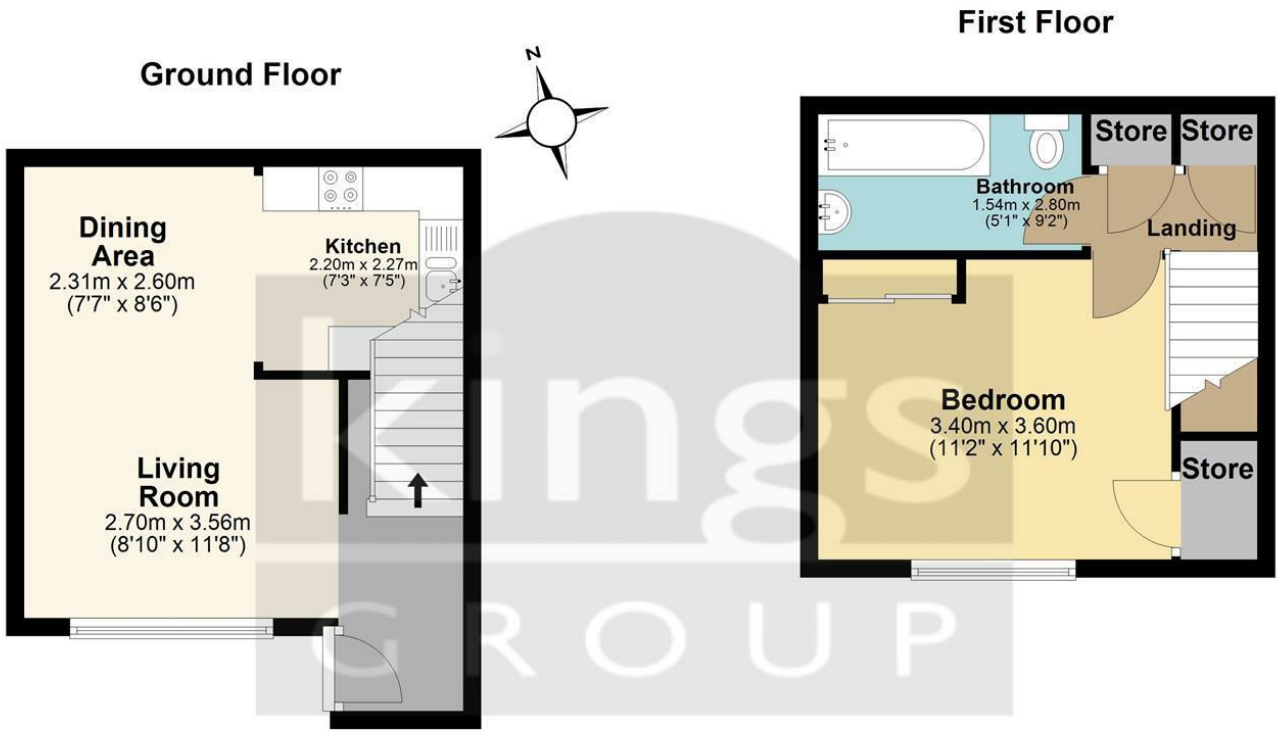
£330,000

Nestled in a peaceful cul-de-sac, this beautifully presented one double bedroom freehold terrace house is tucked away in a quiet residential setting, making it an ideal first time purchase or investment opportunity.

The property offers stunning internal living space, comprising a naturally bright and airy reception room with versatile space for both lounge and dining areas. A modern fitted kitchen provides a stylish and practical cooking environment. The generous double bedroom benefits from a built in storage cupboard, while the three piece bathroom suite is finished to a great standard. Additional storage is available throughout, including access to your own loft space.

Externally, the home enjoys a private front garden with a built in outside storage shed, along with allocated parking.





Total area: approx. 50.8 sq. metres (547.1 sq. feet)

All measurements have been taken as a guide to prospective buyers only and are not precise. This plan is for illustrative purposes only and no responsibility for any error, omission or misstatement. The services, systems and appliances shown have not been tested and no guarantee as to their operability or efficiency can be given. Measurements may have been taken from the widest area and may include wardrobe/cupboard space. No guarantee is given to any measurements including total areas. Buyers are advised to take their own measurements.

© @modephotouk | www.modephoto.co.uk
Plan produced using PlanUp.

Mahon Close

