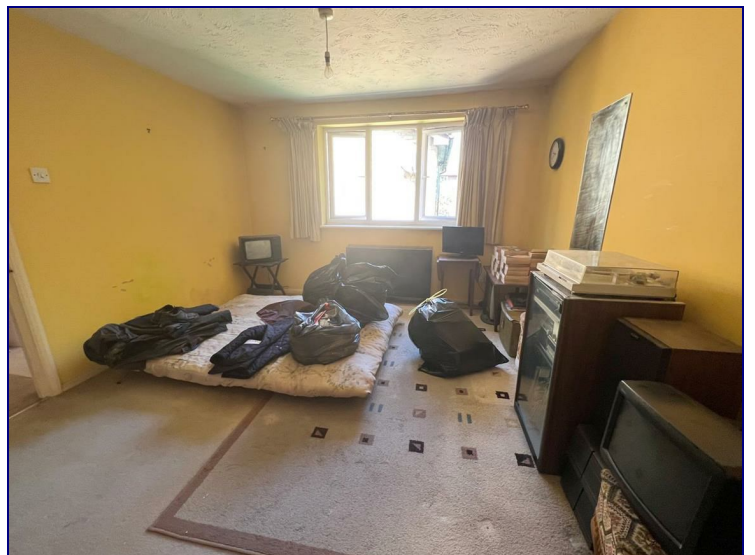




www.kings-group.net

25 Silver Street
Enfield Town EN1 3EF
Tel: 0208 364 4118

Greenway Close, London, N11 3NS



£130,000

Kings Group-Enfield Town are pleased to present this CHAIN FREE TOP FLOOR STUDIO FLAT located within close proximity of transport links including New Southgate Station(0.4 miles) and Arnos Grove Station(0.8 miles). Accommodation comprises living/sleeping area, fitted kitchen, a three piece bathroom suite and ample storage. Residents parking is available.



SECOND FLOOR



Whilst every attempt has been made to ensure the accuracy of the floorplan contained here, measurements of doors, windows, rooms and any other items are approximate and no responsibility is taken for any error, omission or mis-statement. This plan is for illustrative purposes only and should be used as such by any prospective purchaser. The services, systems and appliances shown have not been tested and no guarantee as to their operability or efficiency can be given.
Made with Metropix ©2023

Energy Efficiency Rating		
	Current	Potential
Very energy efficient - lower running costs		
(92 plus) A		
(81-91) B		
(69-80) C		
(55-68) D		
(39-54) E		
(21-38) F		
(1-20) G		
Not energy efficient - higher running costs		
England & Wales	EU Directive 2002/91/EC	

Environmental Impact (CO ₂) Rating		
	Current	Potential
Very environmentally friendly - lower CO ₂ emissions		
(92 plus) A		
(81-91) B		
(69-80) C		
(55-68) D		
(39-54) E		
(21-38) F		
(1-20) G		
Not environmentally friendly - higher CO ₂ emissions		
England & Wales	EU Directive 2002/91/EC	

