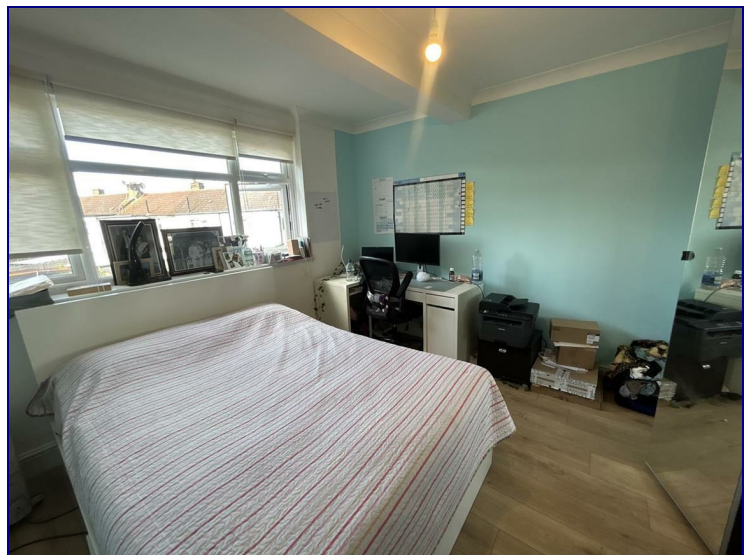
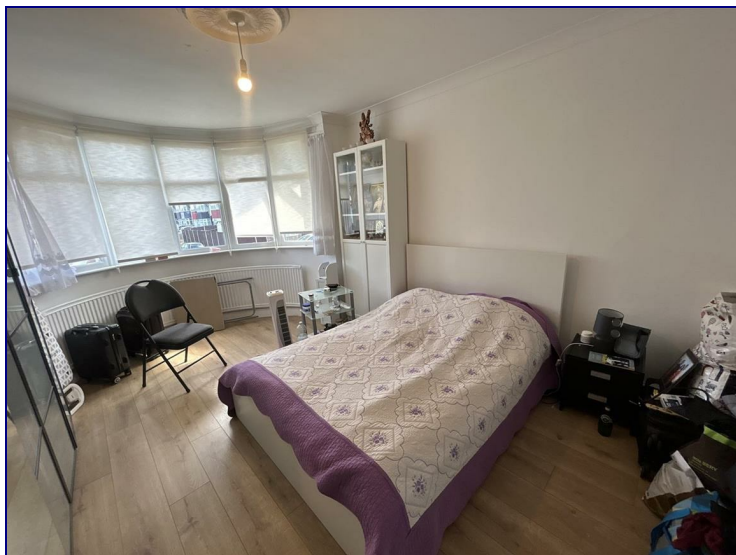


**Pasteur Gardens, London, N18 1JG**



**£2,400**

Spacious 3-Bedroom, 2-Bathroom Home with Driveway – Pasteur Gardens, N18


Welcome to this beautifully presented 3-bedroom family home located on the sought-after Pasteur Gardens, N18. Offering generous living space, modern finishes, and fantastic amenities, this property is perfect for families seeking comfort and convenience on a quiet residential road.


Step inside to a bright and airy through lounge, ideal for both relaxing evenings and entertaining guests. The living room leads out to a private garden – perfect for summer barbecues or enjoying some outdoor space.

Upstairs, you'll find three well-proportioned bedrooms, along with two bathrooms and a total of three toilets, providing excellent convenience for busy households.





| Energy Efficiency Rating                    |                            |   |
|---|----------------------------|---|
|   | Current                    | Potential   |
| Very energy efficient - lower running costs |                            |   |
| (92 plus) A                                 |                            |   |
| (81-91) B                                   |                            |   |
| (69-80) C                                   |                            |   |
| (55-68) D                                   |                            |   |
| (39-54) E                                   |                            |   |
| (21-38) F                                   |                            |   |
| (1-20) G                                    |                            |   |
| Not energy efficient - higher running costs |                            |   |
| <b>England &amp; Wales</b>                  | EU Directive<br>2002/91/EC |  |

| Environmental Impact (CO <sub>2</sub> ) Rating                  |                            |   |
|---|----------------------------|---|
|   | Current                    | Potential   |
| Very environmentally friendly - lower CO <sub>2</sub> emissions |                            |   |
| (92 plus) A   |                            |   |
| (81-91) B   |                            |   |
| (69-80) C   |                            |   |
| (55-68) D   |                            |   |
| (39-54) E   |                            |   |
| (21-38) F   |                            |   |
| (1-20) G  |                            |   |
| Not environmentally friendly - higher CO <sub>2</sub> emissions |                            |   |
| <b>England &amp; Wales</b>                                      | EU Directive<br>2002/91/EC |  |

