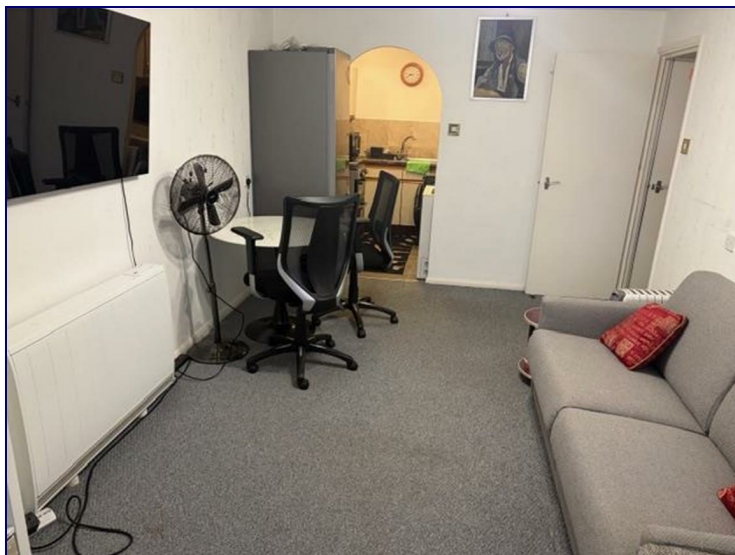



## Ainsley Close, London, N9 9XJ




**£1,300**

Kings Group are delighted to offer this 1 bedroom retirement flat for over 60s. This furnished top floor (lift access) property comprises a double bedroom, large bathroom, spacious lounge, kitchen with appliances and ample storage space. Located close by to Edmonton Green benefitting from great transport links around London as well as being surrounded by many local shops and amenities. Contact our Edmonton office now to book in a viewing!



| Energy Efficiency Rating                    |                            |   |
|---|----------------------------|---|
|   | Current                    | Potential   |
| Very energy efficient - lower running costs |                            |   |
| (92 plus) <b>A</b>                          |                            |   |
| (81-91) <b>B</b>                            |                            |   |
| (69-80) <b>C</b>                            |                            |   |
| (55-68) <b>D</b>                            |                            |   |
| (39-54) <b>E</b>                            |                            |   |
| (21-38) <b>F</b>                            |                            |   |
| (1-20) <b>G</b>                             |                            |   |
| Not energy efficient - higher running costs |                            |   |
| <b>England &amp; Wales</b>                  | EU Directive<br>2002/91/EC |  |

| Environmental Impact (CO <sub>2</sub> ) Rating                  |                            |   |
|---|----------------------------|---|
|   | Current                    | Potential   |
| Very environmentally friendly - lower CO <sub>2</sub> emissions |                            |   |
| (92 plus) <b>A</b>  |                            |   |
| (81-91) <b>B</b>  |                            |   |
| (69-80) <b>C</b>  |                            |   |
| (55-68) <b>D</b>  |                            |   |
| (39-54) <b>E</b>  |                            |   |
| (21-38) <b>F</b>  |                            |   |
| (1-20) <b>G</b>   |                            |   |
| Not environmentally friendly - higher CO <sub>2</sub> emissions |                            |   |
| <b>England &amp; Wales</b>                                      | EU Directive<br>2002/91/EC |  |

