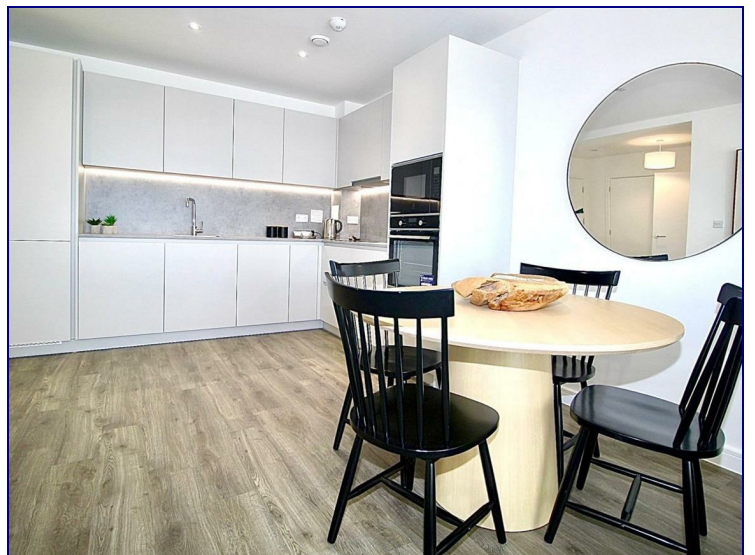
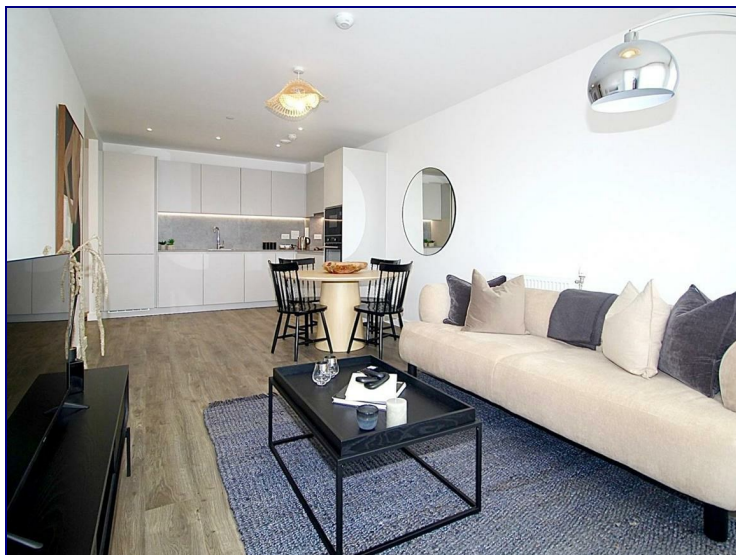




www.kings-group.net

23 Silver Street
Enfield Town EN1 3EF
Tel: 0208 3669 717

31 Bloomsbury Avenue, London, N14 4FR



£2,700 PCM

****SHOW ROOM READY****

Beautifully Presented Two Bedroom Apartment which has been newly built to an impeccable standard. Available to let now.

Occupants will benefit from a fully equipped open plan kitchen/living/dining area with doors leading out onto the private balcony, two double bedrooms with an En-suite to the master, an additional three piece bathroom suite and storage.

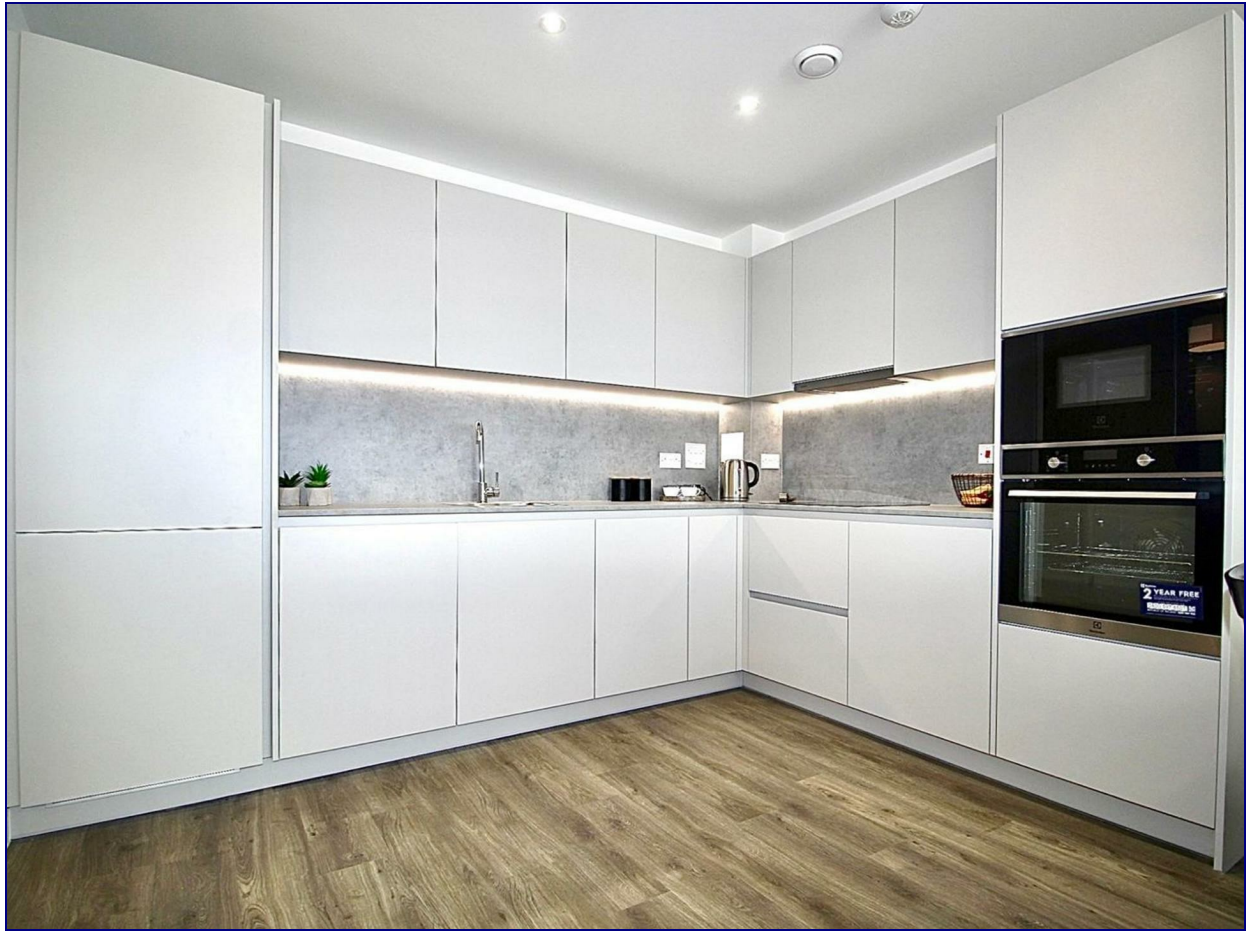
The property can come as shown with brand new furnishings which are show room ready or can be offered unfurnished for a discounted rental price. Please contact the branch for more information.

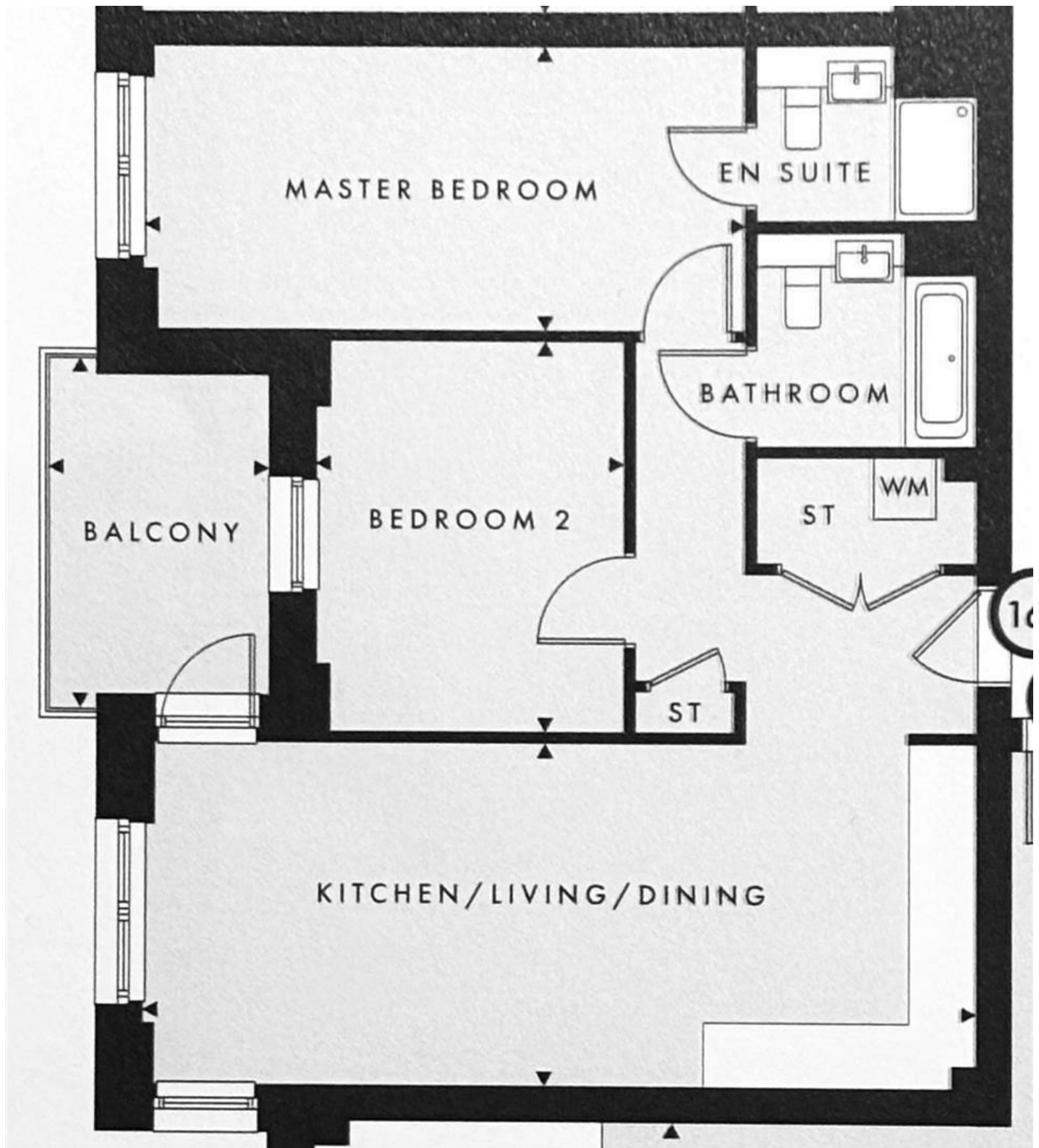
Kitchen/Living/Dining
26'8" x 11'1" (8.13 x 3.39)

Master Bedroom
19'3" x 9'1" (5.88 x 2.77)

Bedroom 2
12'7" x 9'10" (3.84 x 3.02)

Balcony
10'5" x 7'4" (3.20 x 2.24)





Energy Efficiency Rating		
	Current	Potential
Very energy efficient - lower running costs		
(92 plus) A		
(81-91) B		
(69-80) C		
(55-68) D		
(39-54) E		
(21-38) F		
(1-20) G		
Not energy efficient - higher running costs		
England & Wales	EU Directive 2002/91/EC	83 83

Environmental Impact (CO ₂) Rating		
	Current	Potential
Very environmentally friendly - lower CO ₂ emissions		
(92 plus) A		
(81-91) B		
(69-80) C		
(55-68) D		
(39-54) E		
(21-38) F		
(1-20) G		
Not environmentally friendly - higher CO ₂ emissions		
England & Wales	EU Directive 2002/91/EC	

