



[www.kings-group.net](http://www.kings-group.net)

23 Silver Street  
Enfield Town EN1 3EF  
Tel: 0208 3669 717

## Avalon Close, Enfield, EN2 8LP



**£1,500 PCM**

One Bedroom Apartment, Available Now.

Occupants will benefit from a dual aspect open plan kitchen/lounge, double bedroom with walk in wardrobe and modern shower room.

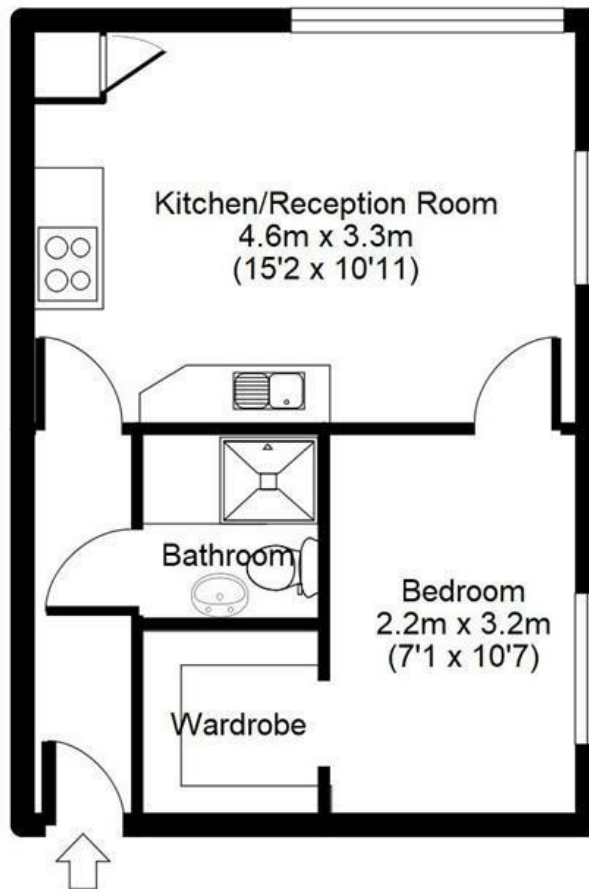
Offered Furnished including all Furnishings as shown.

This property is located just off the highly sought after Ridgeway. Gordon Hill and Enfield Chase Station are both within close proximity giving direct access into London Liverpool Street and Tottenham Hall. Local transport links are also easily accessible via many bus routes.



# Avalon Close, Enfield, EN2

APPROX GROSS INTERNAL FLOOR AREA: 328 sq. ft / 31 sq. m



For identification purposes only  
Measurements are approx and not to scale

Energy Efficiency Rating		Current	Potential
Very energy efficient - lower running costs			
(92 plus) A			
(81-91) B			
(69-80) C			
(55-68) D			
(39-54) E			
(21-38) F			
(1-20) G			
Not energy efficient - higher running costs			
England & Wales		76	84
		EU Directive 2002/91/EC	

Environmental Impact (CO <sub>2</sub> ) Rating		Current	Potential
Very environmentally friendly - lower CO <sub>2</sub> emissions			
(92 plus) A			
(81-91) B			
(69-80) C			
(55-68) D			
(39-54) E			
(21-38) F			
(1-20) G			
Not environmentally friendly - higher CO <sub>2</sub> emissions			
England & Wales			
		EU Directive 2002/91/EC	



Associated Offices in London, Essex and Hertfordshire  
Kings Head Office Tudor Lodge, Burton Lane, Goffs Oak, Hertfordshire EN7 6SY Tel: 01707-872000

