

Avalon Close, Enfield, EN2 8LP



£1,350 PCM

One Bedroom Apartment, Available Now.

Occupants will benefit from a dual aspect open plan kitchen/lounge, double bedroom with walk in wardrobe and modern shower room.

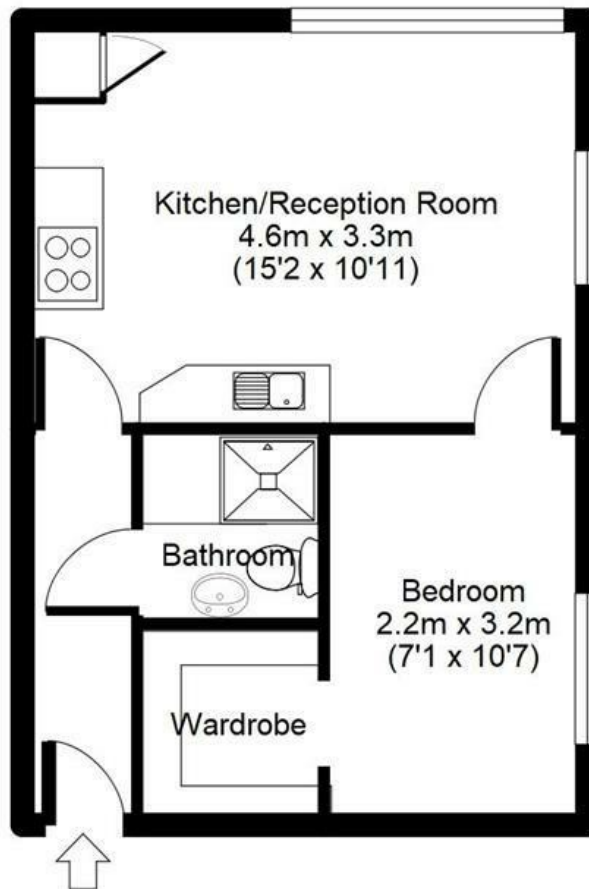
Offered Furnished including all Furnishings as shown.

This property is located just off the highly sought after Ridgeway. Gordon Hill and Enfield Chase Station are both within close proximity giving direct access into London Liverpool Street and Tottenham Hall. Local transport links are also easily accessible via many bus routes.



Avalon Close, Enfield, EN2

APPROX GROSS INTERNAL FLOOR AREA: 328 sq. ft / 31 sq. m



For identification purposes only
Measurements are approx and not to scale

Energy Efficiency Rating		Current	Potential
Very energy efficient - lower running costs			
(92 plus) A			
(81-91) B			
(69-80) C			
(55-68) D			
(39-54) E			
(21-38) F			
(1-20) G			
Not energy efficient - higher running costs			
England & Wales	EU Directive 2002/91/EC	76	84

Environmental Impact (CO ₂) Rating		Current	Potential
Very environmentally friendly - lower CO ₂ emissions			
(92 plus) A			
(81-91) B			
(69-80) C			
(55-68) D			
(39-54) E			
(21-38) F			
(1-20) G			
Not environmentally friendly - higher CO ₂ emissions			
England & Wales	EU Directive 2002/91/EC		



Associated Offices in London, Essex and Hertfordshire
Kings Head Office Tudor Lodge, Burton Lane, Goffs Oak, Hertfordshire EN7 6SY Tel: 01707-872000

