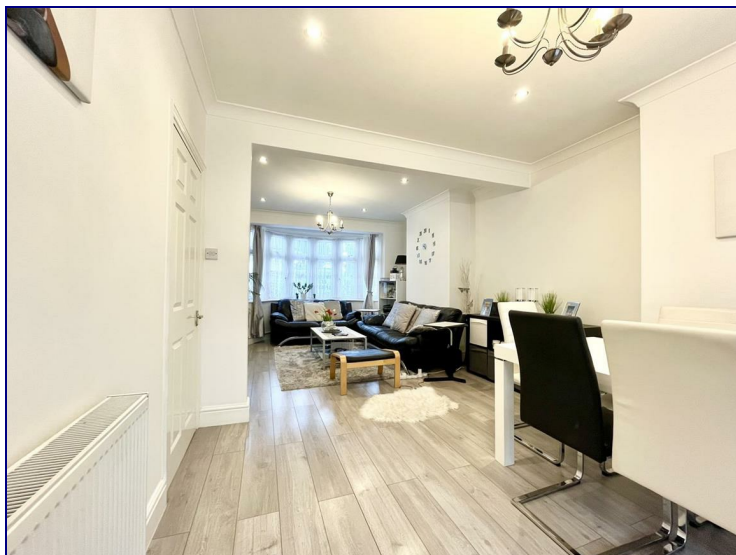




www.kings-group.net

23 Silver Street
Enfield Town EN1 3EF
Tel: 0208 3669 717

Trinity Avenue, Enfield, EN1 1HS



£2,300 PCM


Three Bedroom House with Off Street Parking for Two Cars.

Available 18th November.

Occupants will benefit from a spacious lounge leading to a large garden with two sheds for storage, a fitted kitchen with oven/hob with garden access also. The first floor offers two double bedrooms, one single bedroom and a three piece bathroom suite.

This property is in a prime location with direct access to the A10 giving access to surrounding areas. You will find Bush Hill Park Station within walking distance aswell as local shops/amenities. Enfield Town Retail Park is also within a 2 minute drive with its array of superstores.



Energy Efficiency Rating		
	Current	Potential
Very energy efficient - lower running costs		
(92 plus) A		
(81-91) B		
(69-80) C		
(55-68) D		
(39-54) E		
(21-38) F		
(1-20) G		
Not energy efficient - higher running costs		
England & Wales	EU Directive 2002/91/EC	

Environmental Impact (CO ₂) Rating		
	Current	Potential
Very environmentally friendly - lower CO ₂ emissions		
(92 plus) A		
(81-91) B		
(69-80) C		
(55-68) D		
(39-54) E		
(21-38) F		
(1-20) G		
Not environmentally friendly - higher CO ₂ emissions		
England & Wales	EU Directive 2002/91/EC	