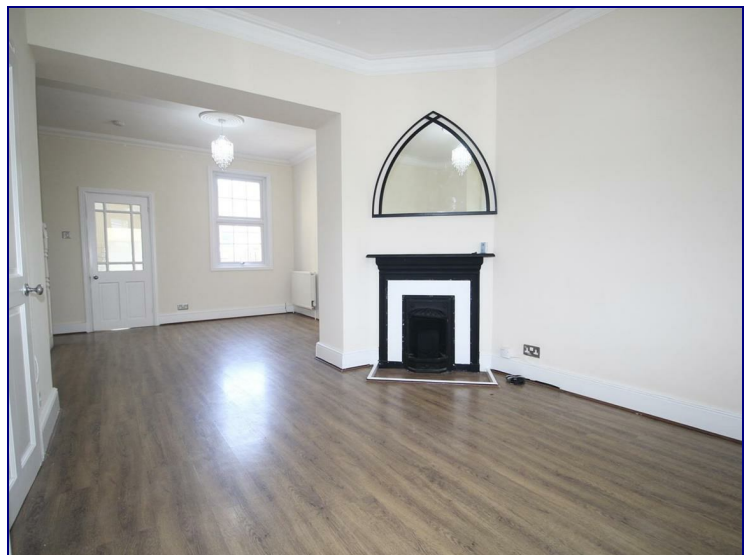
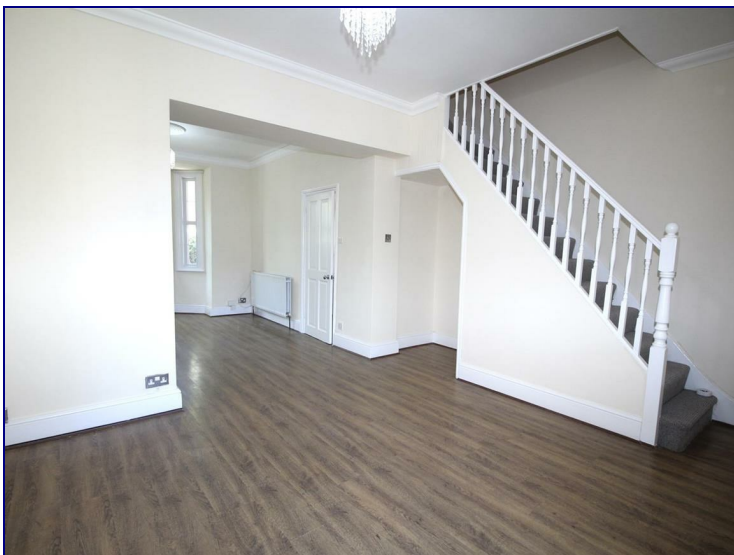


## Landseer Road, Enfield, EN1 1DR



**£2,099 PCM**

Three Bedroom Terraced House, Available Now.

This well kept property features a spacious through lounge leading to a modern kitchen, ground floor three piece bathroom suite, private easily maintainable garden, gas central heating, two double bedrooms and one single bedroom.

Parking is available on street with no restrictions.

Conveniently located within a short walk to Bush Hill Park Station and Southbury Rail Station, with additional access to Enfield Town Railway Station. Excellent transport links into Central London, with nearby Underground



