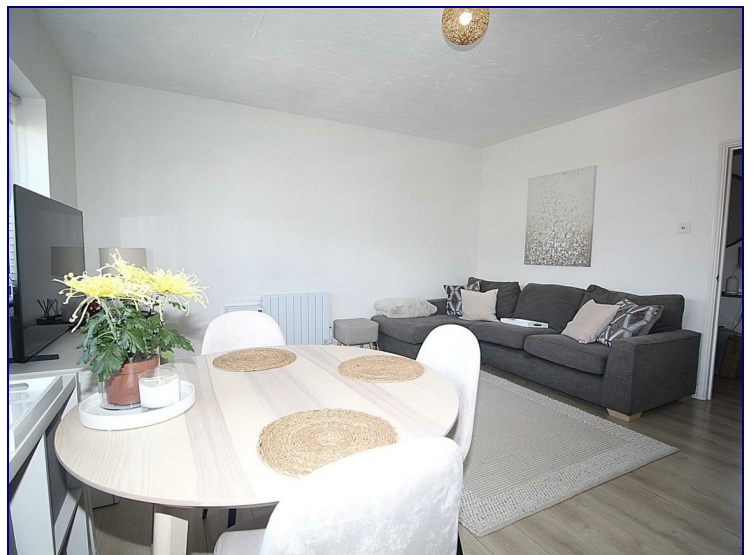




[www.kings-group.net](http://www.kings-group.net)

23 Silver Street  
Enfield Town EN1 3EF  
Tel: 0208 3669 717

## Windmill Hill, Enfield, EN2 7AW



**£1,850 Per Month**

Well Presented Two Bedroom, Two Bathroom Apartment, Available 29th June.

This property features generous reception room leading to a modern fitted kitchen, contemporary three piece bathroom suite, two good size bedrooms with an En-suite to the master.

Additional benefits include secure entry, double glazing, ample storage and residents parking to the rear. Offered Part Furnished.

Ideally located just a 2-3 minute walk from Enfield Chase Rail Station and approximately 15 minutes walk to Gordon Hill Station, offering great transport links into Central London. Residents also benefit from excellent local amenities with Enfield Towns wide selection of shops, cafes, restaurants, supermarkets and leisure facilities all within easy reach.



