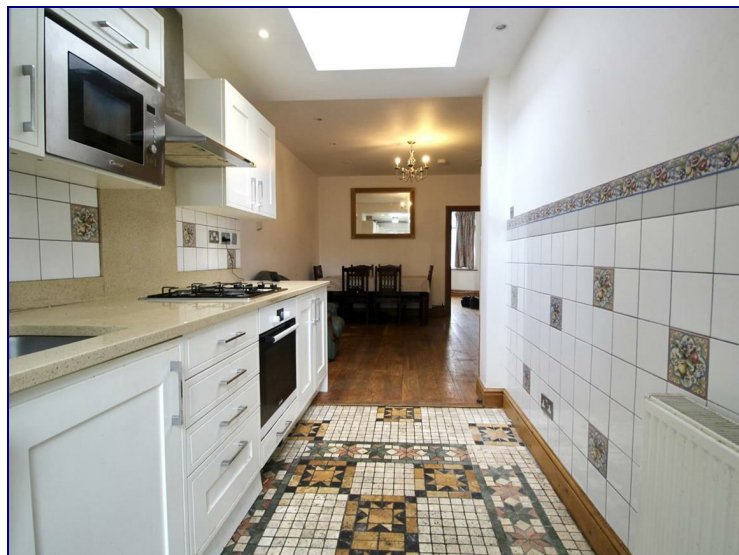
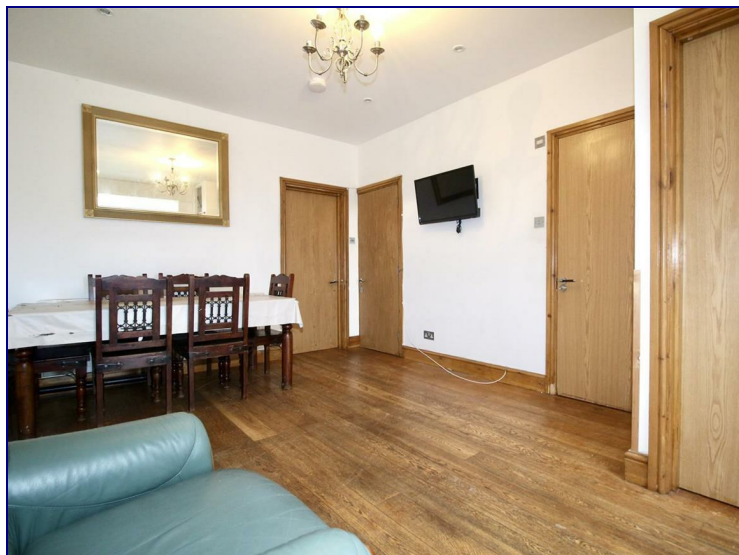


North Circular Road, London, N13 5JH



£2,350 PCM

Three Bedroom Split Level Maisonette with Off Street Parking and Private Garden.

Available Now.

Occupants will benefit from an open plan kitchen/lounge with appliances, three double bedrooms with En-Suite to two of the rooms, a third family bathroom, private garden leading to off street parking for two cars.

The property is offered part furnished.

This property offers excellent access for transport. Conveniently located within walking distance for all amenities on Green Lanes, N13 and for Palmers Green British Rail station providing a fast and efficient commute to the city and West End.



