

10 Bolehill Lane, Crookes, Sheffield, S10 1SB

Tenancy Information

Rent: £870.00 pcm excluding utilities & council tax

Rent Schedule: Monthly instalments in advance

Security Deposit: £870.00

Bills Package: Unihomes package available for gas, electricity, water, internet & TV licence (optional)

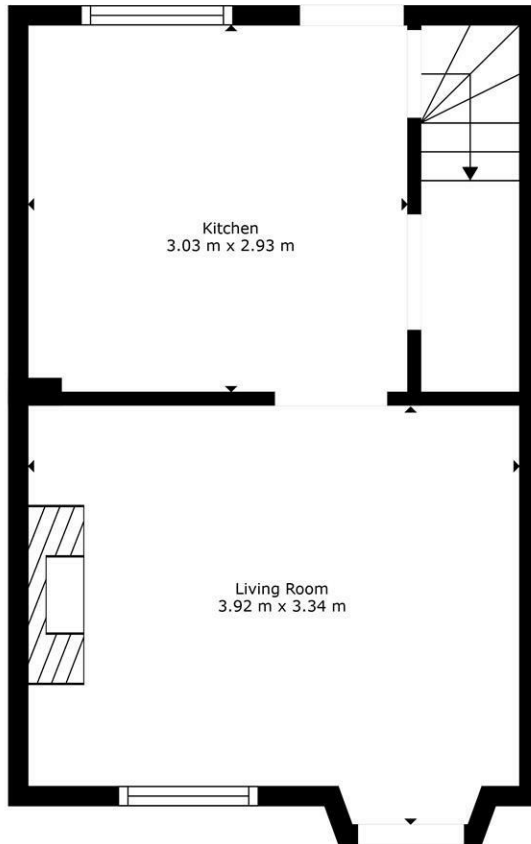
Council Tax: Band A- not applicable for full-time students

EPC Rating: D

£870 PCM


Available: 8th July 2026

- 2 Double Bedrooms
- Large Modern Bathroom
- Fitted Kitchen
- Raised patio garden to rear with outhouse
- Close to local amenities and public transport
- On Street Parking
- Deposit – One Months Rent
- Available - July 2026
- Rent - £870 pcm
- Unihomes Bills package available upon request



TOTAL: 60 m²
 GROUND FLOOR: 24 m², FIRST FLOOR: 24 m², SECOND FLOOR: 12 m²
 EXCLUDED AREAS: LOW CEILING: 4 m²
 WALLS: 8 m²

Sizes And Dimenstions Are Approximate. Actual May Vary

Energy Efficiency Rating		Current	Potential
Very energy efficient - lower running costs			
(92 plus) A			86
(81-91) B			
(69-80) C			
(55-68) D		61	
(39-54) E			
(21-38) F			
(1-20) G			
Not energy efficient - higher running costs			
England & Wales		EU Directive 2002/91/EC 	

Environmental Impact (CO ₂) Rating		Current	Potential
Very environmentally friendly - lower CO ₂ emissions			
(92 plus) A			87
(81-91) B			
(69-80) C			
(55-68) D		59	
(39-54) E			
(21-38) F			
(1-20) G			
Not environmentally friendly - higher CO ₂ emissions			
England & Wales		EU Directive 2002/91/EC 