



Flat 2 27 Victoria Road, Sheffield, South Yorkshire, S10 2DJ

Rent: £920.00 pcm – excludes utilities & council tax

Rent Schedule: Monthly in advance

Security Deposit: Total £920.00

Bills Package: Unihomes package available for electricity, water, internet & TV licence (optional)

Council Tax: Band A - not applicable for full-time students

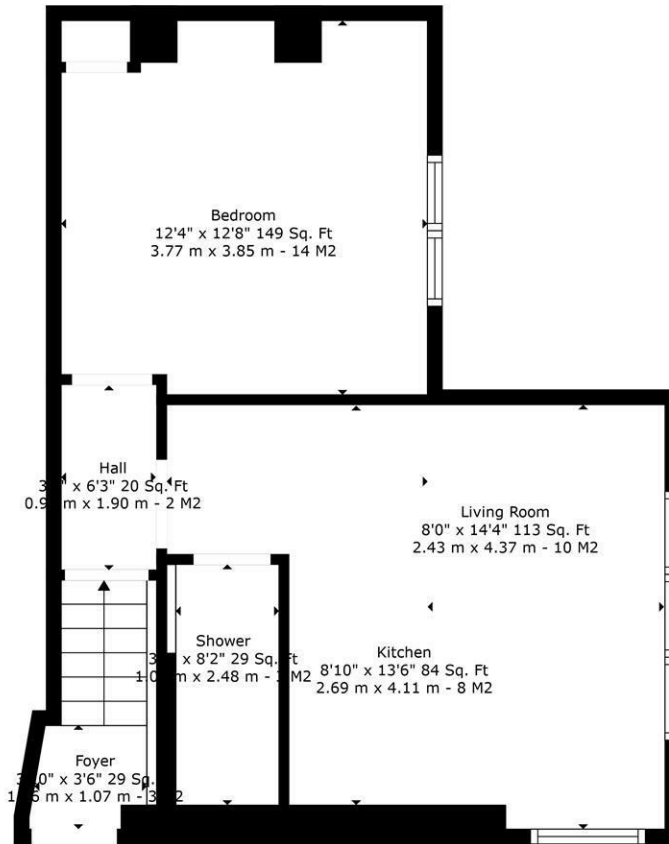
EPC Rating: E

Tenancy Dates: 2nd September 2026 – 31st August 2027

- One Bedroom Flat
- Double Bedroom
- Open Plan Kitchen Dinner
- Modern Shower Room
- Contemporary Kitchen
- Close to Ecclesall Road
- Deposit - 1 Months Rent
- Tenancy -2nd September 2026 – 31st August 2027
- Rent £920 pcm
- Unihomes Bills package available upon request

£920 Per Month

Available: 2nd September 2026



TOTAL: 446 sq. ft, 41 m2
27 VICTORIA ROAD FLAT 2: 446 sq. ft, 41 m2

Sizes And Dimentions Are Approximate. Actual May Vary



Energy Efficiency Rating	Current	Potential
Very energy efficient - lower running costs		
(92 plus) A		
(81-91) B		
(69-80) C		
(55-68) D		
(39-54) E		
(21-38) F		
(1-20) G		
Not energy efficient - higher running costs		
England & Wales	EU Directive 2002/91/EC	69

Environmental Impact (CO ₂) Rating	Current	Potential
Very environmentally friendly - lower CO2 emissions		
(92 plus) A		
(81-91) B		
(69-80) C		
(55-68) D		
(39-54) E		
(21-38) F		
(1-20) G		
Not environmentally friendly - higher CO2 emissions		
England & Wales	EU Directive 2002/91/EC	