



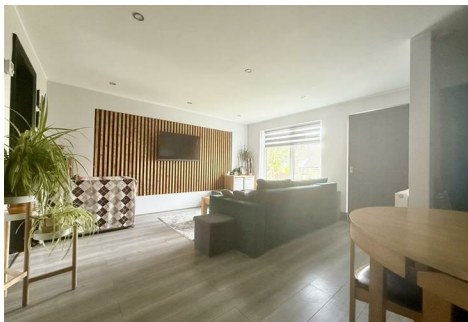
01452 690553



sales@applebys.estate



www.applebysestateagents.co.uk



29 Redwood Close, Gloucester, GL1 5TZ

£225,000

This beautifully presented three-bedroom house offers an ideal family home. The property boasts a spacious and versatile layout, perfect for modern living. Upon entering, you will be greeted by an inviting open plan lounge and dining area.

The ground floor also features a convenient bathroom, enhancing the practicality of the home for families. The property is complemented by off-road parking, as well as a garage.

The location is highly desirable, with local amenities, schools, and parks within easy reach, making it an excellent choice for families looking to settle in a vibrant community. NOW OPEN! The Blackbridge Community and Sports Hub is a brand new community-owned and community-led facility in the heart of Podsmead in Gloucester which will offer sports, leisure and wellbeing activities.

Entrance Hall

Lounge/Dining Room 18'5 x 14'1 (5.61m x 4.29m)

Kitchen 9'9 x 7'9 (2.97m x 2.36m)

Bedroom 1 10'4 x 9'11 (3.15m x 3.02m)

Bathroom

Bedroom 2 14'1 x 9'0 (4.29m x 2.74m)

Bedroom 3 10'10 x 9'4 (3.30m x 2.84m)

OUTSIDE

Situated on a NO THROUGH road, GARAGE and parking space to the rear, the front garden is all enclosed with a pleasant outlook over the green.

The rear garden is mainly laid to lawn garden with a large patio, personnel door to the GARAGE and walkway giving access to the rear.

Services

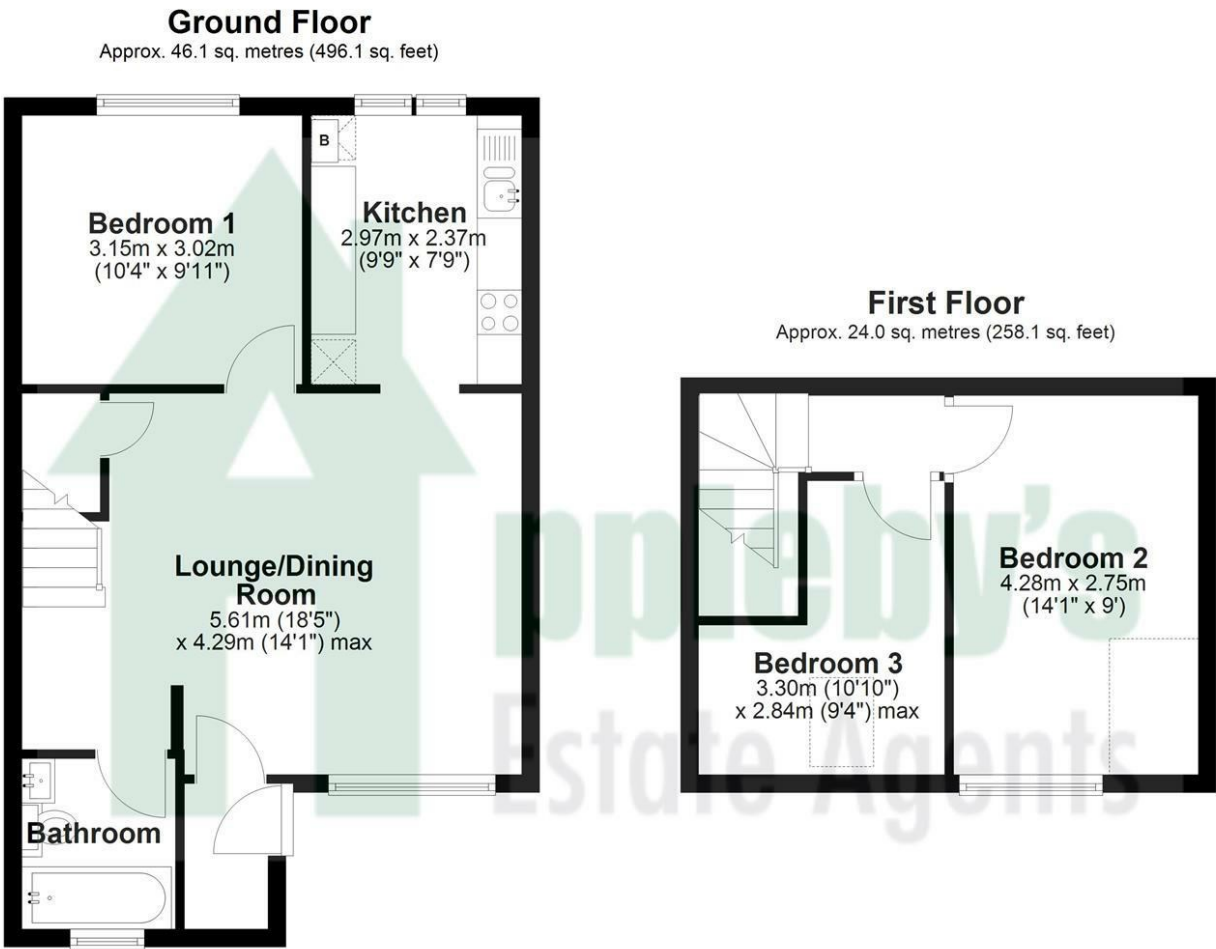
Mains drainage, gas central heating (combi boiler 3 years old approx.)

Gloucester City Council tax band A

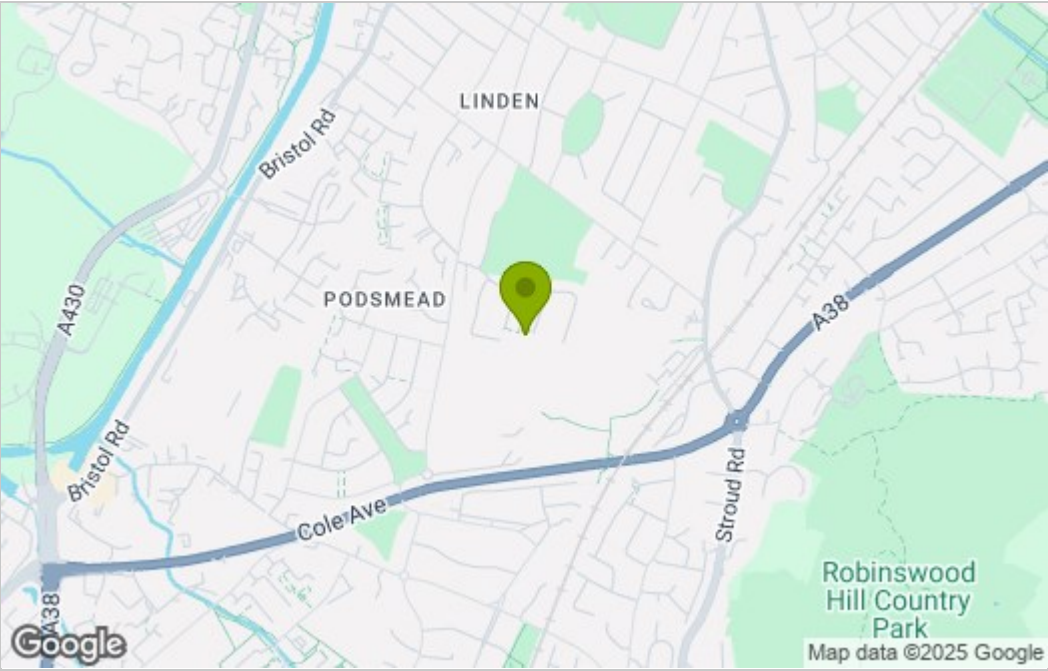
Tenure

Freehold

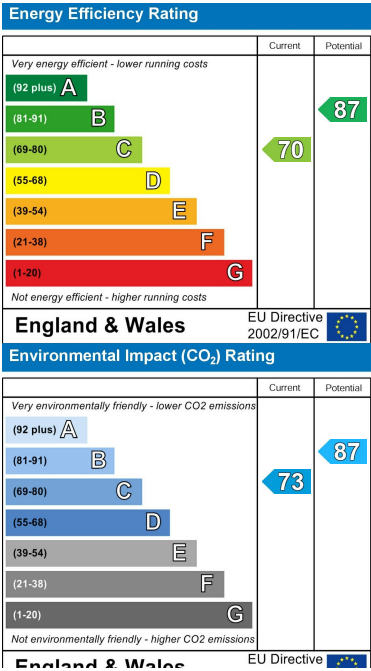
Floor Plan



Area Map



Energy Efficiency Graph



These particulars, whilst believed to be accurate are set out as a general outline only for guidance and do not constitute any part of an offer or contract. Intending purchasers should not rely on them as statements of representation of fact, but must satisfy themselves by inspection or otherwise as to their accuracy. No person in this firms employment has the authority to make or give any representation or warranty in respect of the property.