



01452 690553



sales@appleby.s.estate



www.applebysestateagents.co.uk



33 Orchard Rise, Newnham, GL14 1AL

£279,000

Are you searching for a family home in a Village? This very well presented FOUR bedroom home is perfect for a growing family.

The Situation

Located in the picturesque village of Newnham-on-Severn set on the River Severn. The character High Street provides a good range of shops which include a Post Office, surgery and local stores. The village also offers a primary school, chemist, public houses and garage.

Entrance Hall

WC

Lounge 14'11 x 11'4 (4.55m x 3.45m)

Kitchen/Dining Room 14'9 x 10'2 (4.50m x 3.10m)

Conservatory 12'10 x 11'6 (3.91m x 3.51m)

Bedroom 1 18'8 x 8'0 (5.69m x 2.44m)

Ensuite Shower Room

Bedroom 2 11'6 x 8'0 (3.51m x 2.44m)

Bedroom 3 10'11 x 8'2 (3.33m x 2.49m)

Bedroom 4 8'4 x 6'6 (2.54m x 1.98m)

Bathroom

OUTSIDE

Situated on a NO THROUGH ROAD the front drive leads to under cover area and the GARAGE.

The mature rear garden has a large patio, personnel door to garage and raised lawn.

Garage 16'3 x 8'9 (4.95m x 2.67m)

Services

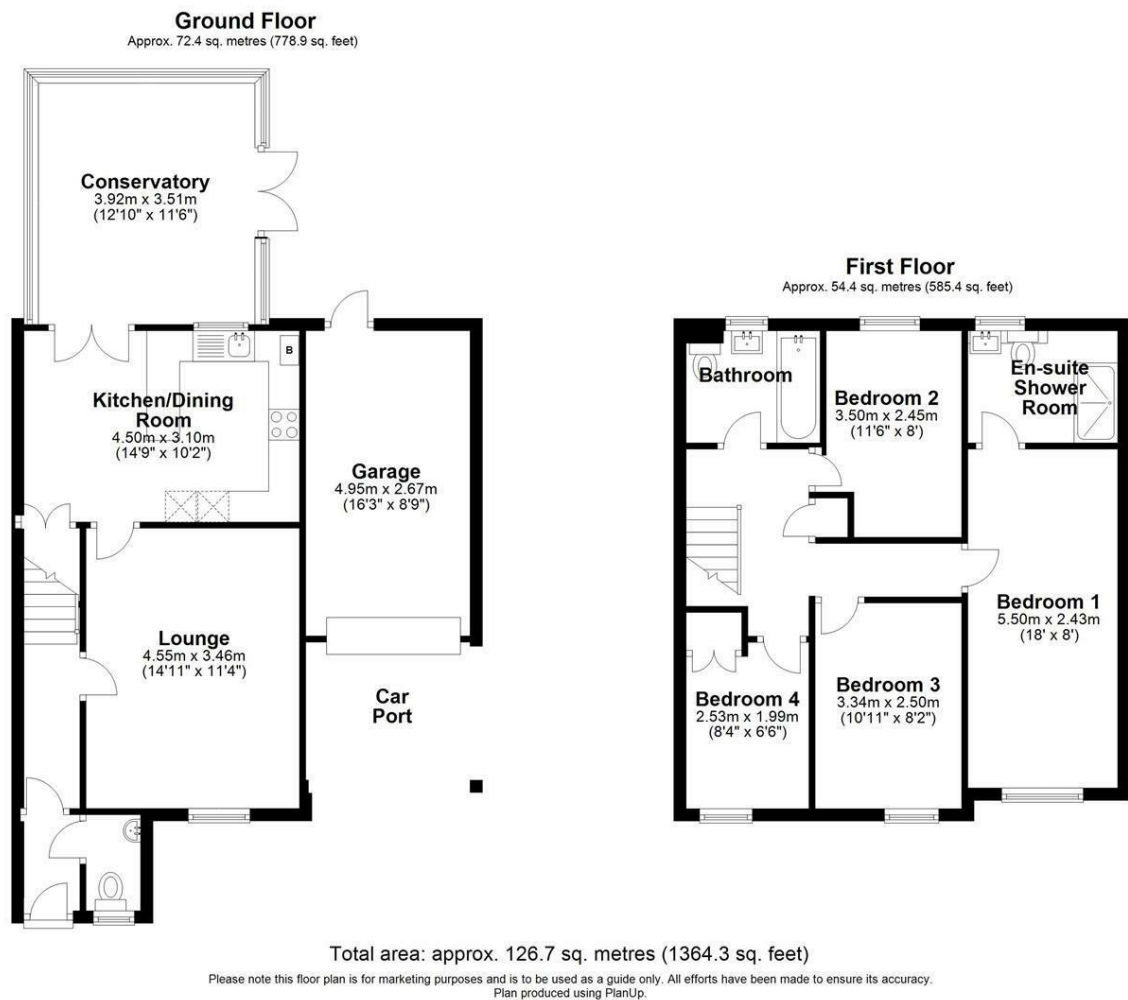
Mains electric, drainage and gas.

Forest Of Dean District Council Tax Band: C

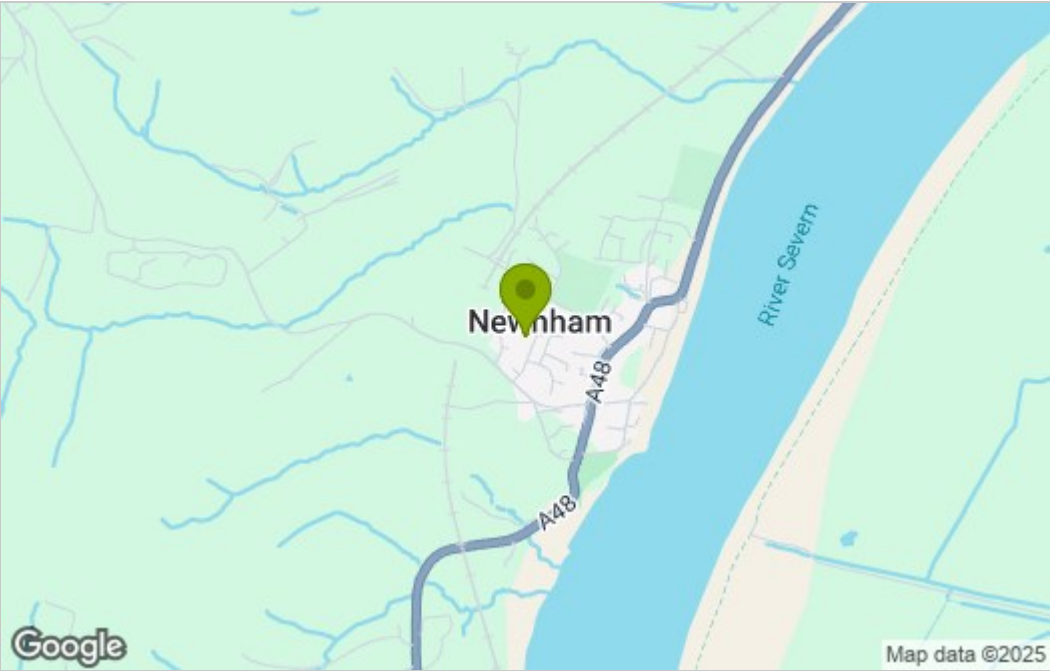
Tenure

Freehold

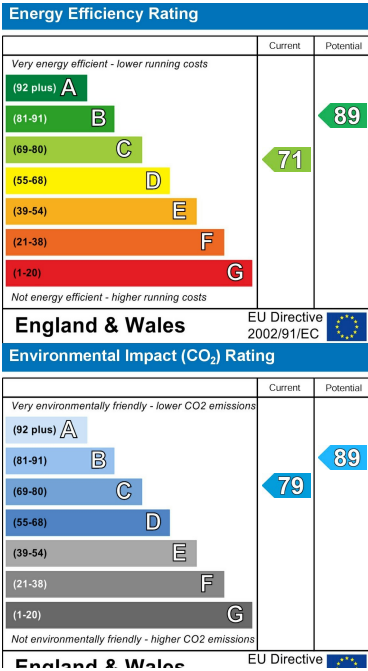
Floor Plan



Area Map



Energy Efficiency Graph



These particulars, whilst believed to be accurate are set out as a general outline only for guidance and do not constitute any part of an offer or contract. Intending purchasers should not rely on them as statements of representation of fact, but must satisfy themselves by inspection or otherwise as to their accuracy. No person in this firms employment has the authority to make or give any representation or warranty in respect of the property.