






45 Atkyns Drive
, Tuffley, GL4 0XY

£425,000

 5  2  1  B

This exquisite Five bedroom family home is in show home condition, the property is perfect for those seeking a modern and stylish living space. The house is situated on a private drive within a no-through road overlooking the wildlife area and views towards Robinswood Hill Country Park.

The surrounding area is known for its convenient amenities, making it an excellent choice for families looking to settle down. With local schools, parks, and shops within easy reach, you will find everything you need just a stone's throw away.

The Location

Conveniently located within walking distance to high achieving primary, secondary and grammar schooling and easy access to the M5. Tuffley (Whaddon) is ideally placed for local amenities and on a regular bus route, the city centre is not far away with the benefit of the train station providing direct links to London Paddington.

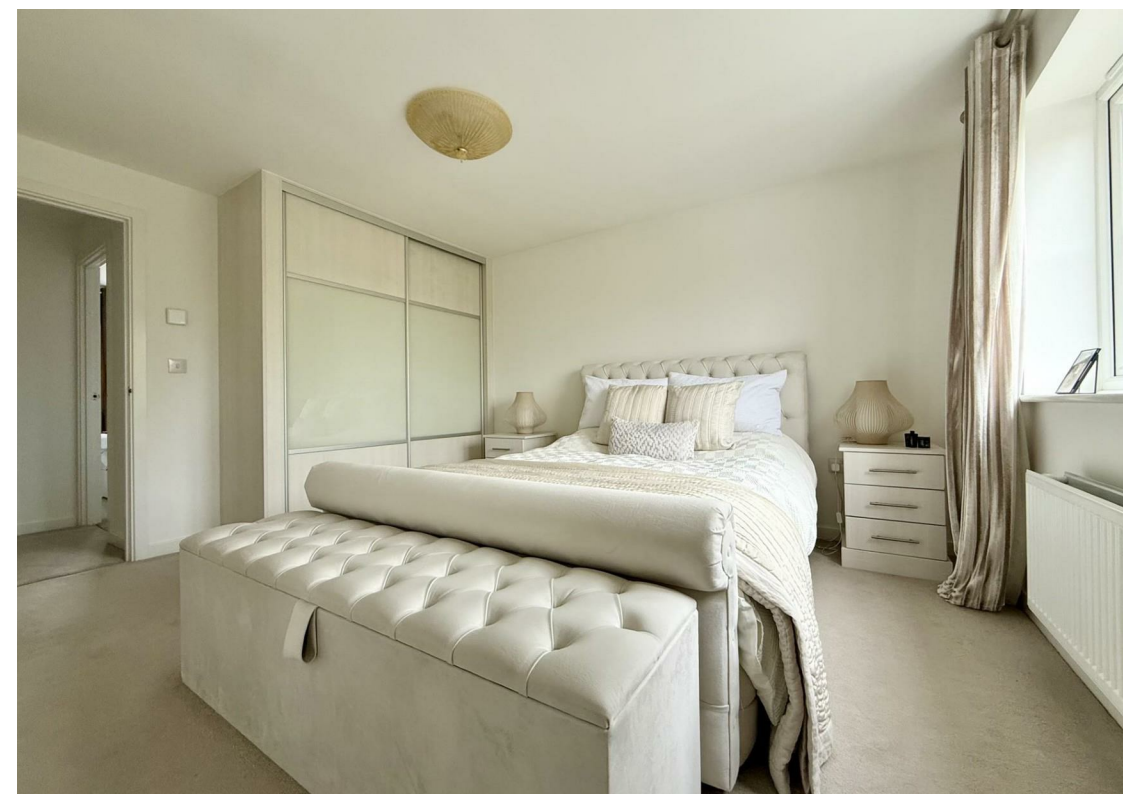
Entrance Hall

Lounge
15'2 x 10'10 (4.62m x 3.30m)

Kitchen/Dining Room
21'3 x 10'0 (6.48m x 3.05m)

Utility

Cloakroom





Bedroom 1
11'6 x 10'10 (3.51m x 3.30m)

Ensuite

Bedroom 2
11'8 x 8'3 (3.56m x 2.51m)

Bedroom 3
11'4 x 10'11 (3.45m x 3.33m)

Bedroom 4
10'2 x 9'3 (3.10m x 2.82m)

Study/Bedroom
7'3 x 7'0 (2.21m x 2.13m)

Bathroom

OUTSIDE

Situated on a private no through road leading to driveway and Garage, pathway leads to the gated side access.

The rear garden has been landscaped with a stylish porcelain tiled patio, raised AstroTurf with a sleeper edge, ideal for entertaining being all enclosed.

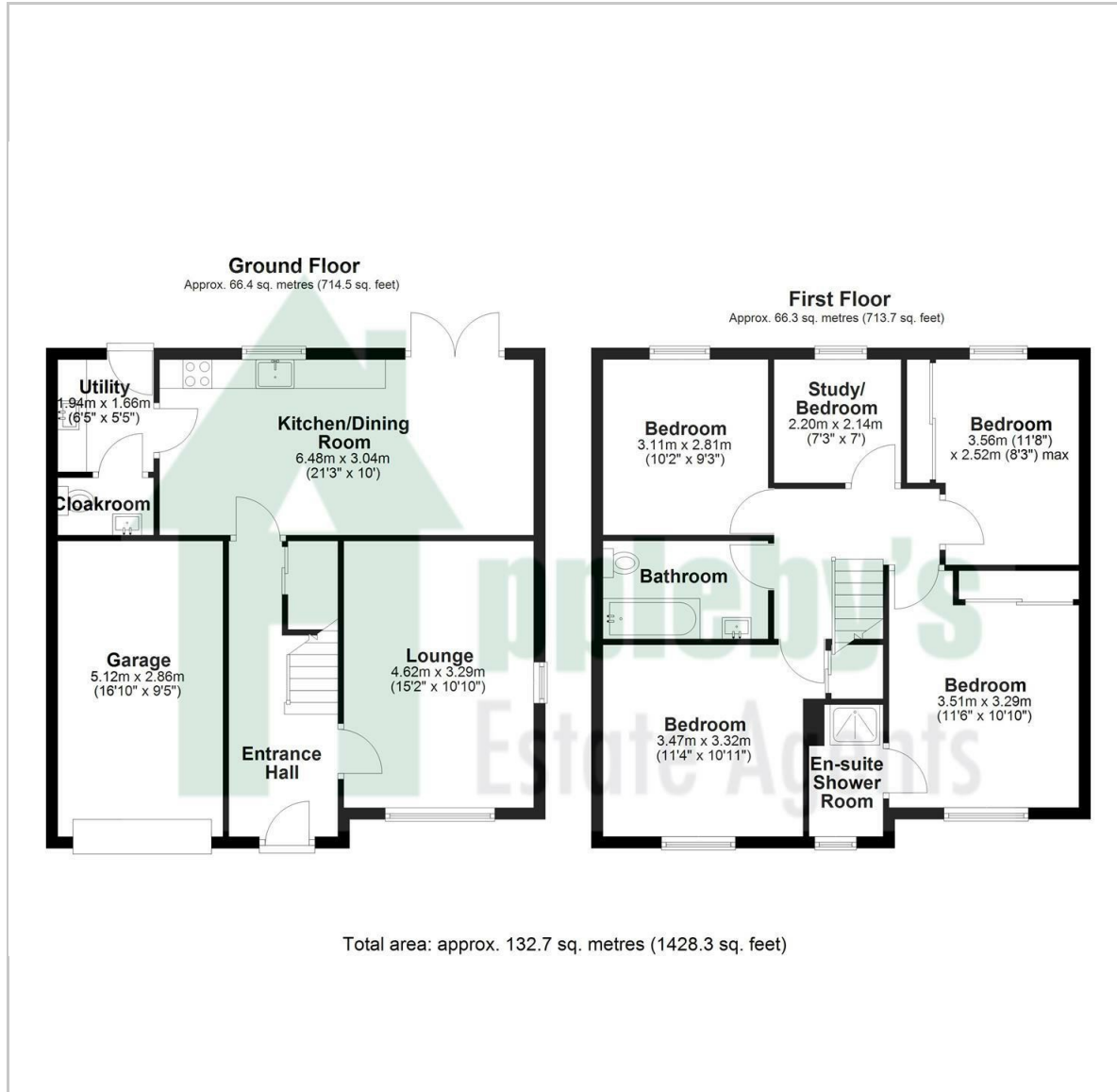
Services

Mains drainage, gas central heating. Gloucester City Council tax band D. There is an estate charge of £300.00 per annum approx, NHBC warranty remaining 5 years approx.

Tenure
Freehold



Floor Plan

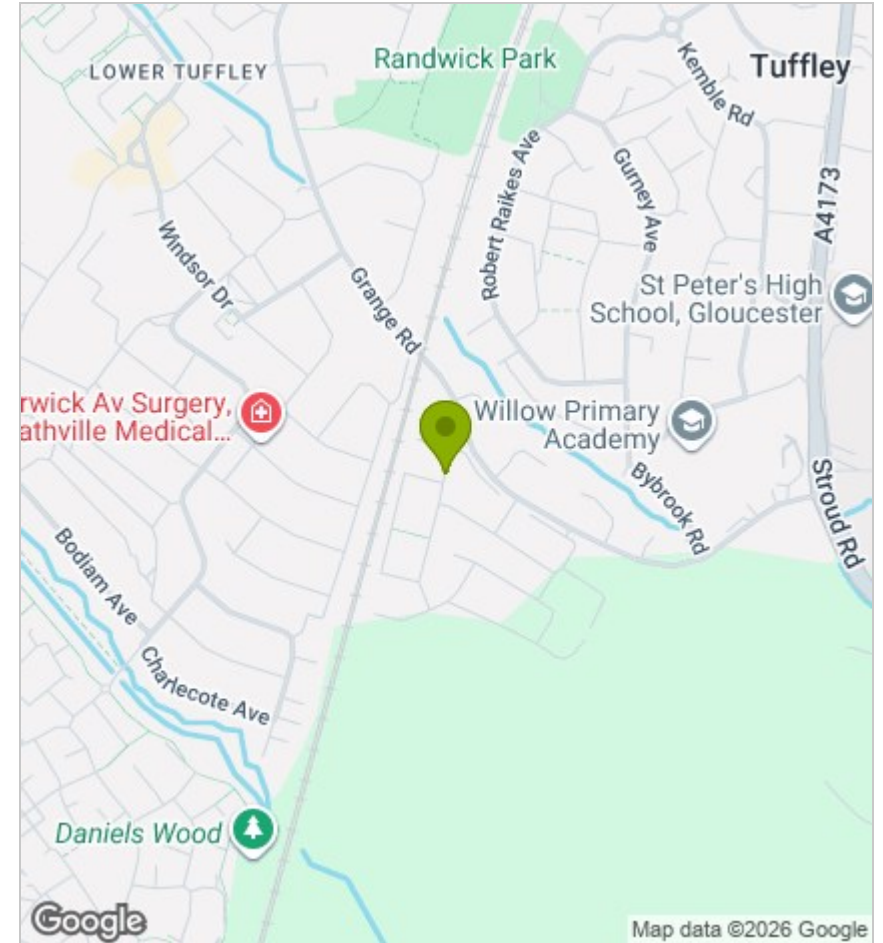


Viewing

Please contact our Appleby's Office on 01452 690553 if you wish to arrange a viewing appointment for this property or require further information.

These particulars, whilst believed to be accurate are set out as a general outline only for guidance and do not constitute any part of an offer or contract. Intending purchasers should not rely on them as statements of representation of fact, but must satisfy themselves by inspection or otherwise as to their accuracy. No person in this firm's employment has the authority to make or give any representation or warranty in respect of the property.

Area Map



Energy Efficiency Graph

