



01452 690553



sales@applebys.estate



www.applebysestateagents.co.uk



22 Grebe Close, Gloucester, GL4 4XL **Offers in excess of £335,000**

This spacious FOUR DOUBLE bedroom detached family home is now available for purchase with no onward chain, situated in a Cul-De-Sac.

Upon entering, you will find a spacious layout that includes two reception rooms, providing ample space, the fitted kitchen is practical and well-equipped, while a convenient downstairs cloakroom adds to the home's functionality. to the first floor, you will discover four generously sized double bedrooms, all of which are served by a well-appointed family bathroom.

Externally, the property boasts a garage & Carport off-road parking. The location is particularly advantageous, as it is close to local amenities***CHAIN FREE***

Entrance Hall

Cloakroom

Kitchen/Breakfast Room 9'10 x 9'2 (3.00m x 2.79m)

Lounge 21'4 x 10'11 (6.50m x 3.33m)

Dining Room 11'2 x 9'2 (3.40m x 2.79m)

Bedroom 1 11'10 x 11'0 (3.61m x 3.35m)

Bedroom 2 11'10 x 9'5 (3.61m x 2.87m)

Bedroom 3 9'2 x 8'4 (2.79m x 2.54m)

Bedroom 4 9'2 x 7'4 (2.79m x 2.24m)

Bathroom

OUTSIDE

Situated in a Cul-De-Sac the property benefits from a garage and off-road parking.

The SOUTH facing rear garden has a large patio with steps up to the main lawn area, shed and gated rear access to the parking.

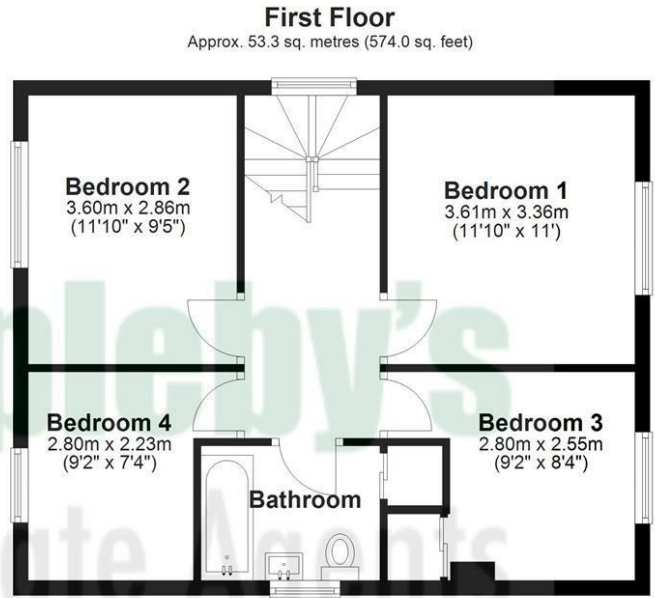
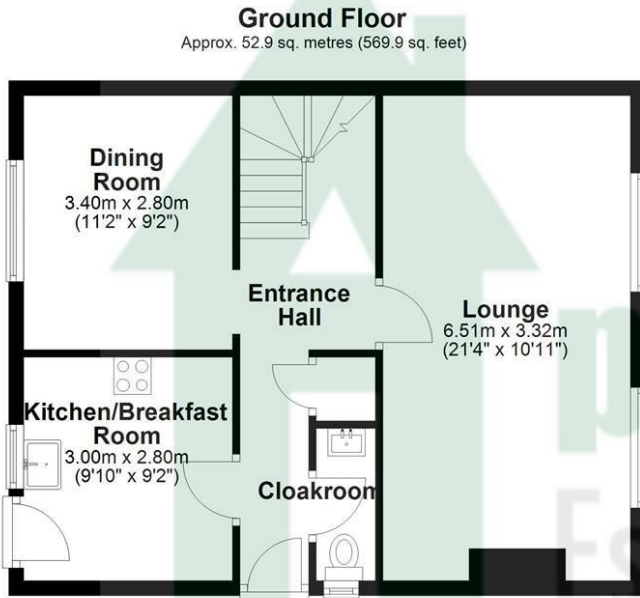
Services

Mains drainage, Gas Central Heating
Gloucester City Council tax band - D

Tenure

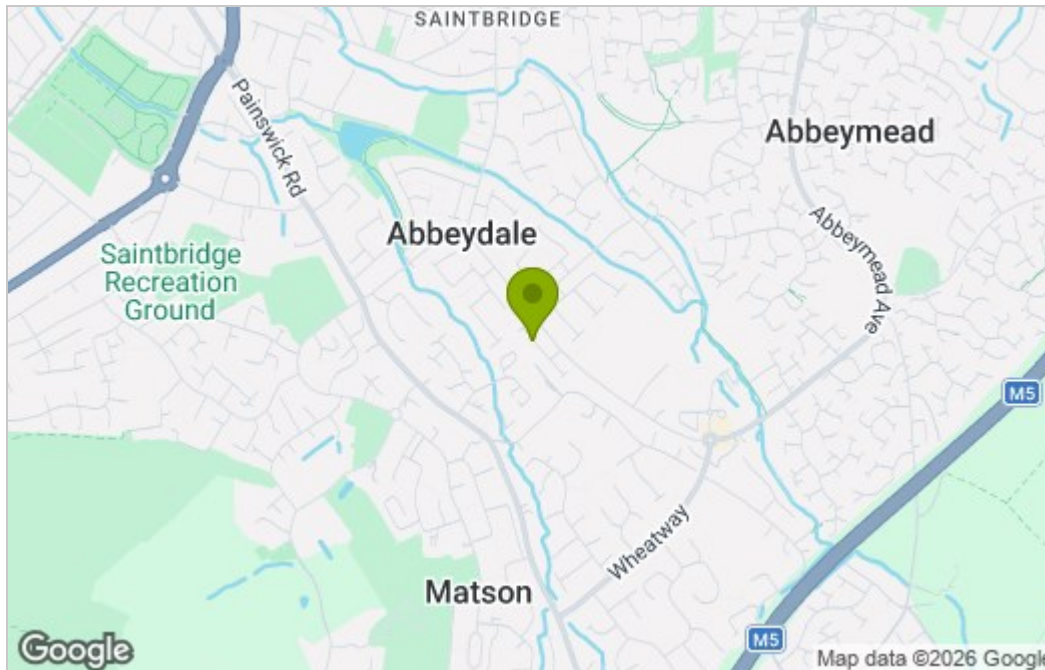
Freehold

Floor Plan

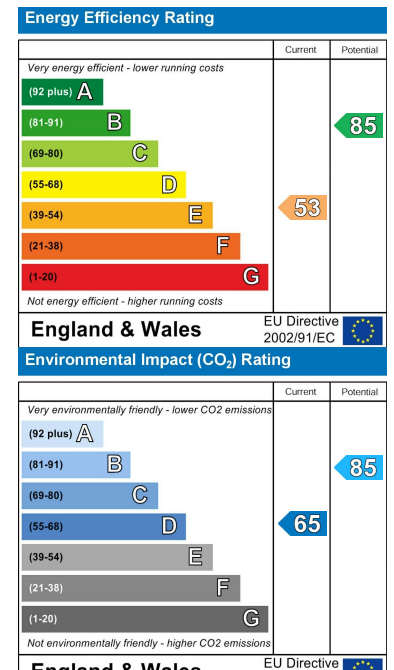


Total area: approx. 106.3 sq. metres (1143.8 sq. feet)

Area Map



Energy Efficiency Graph



These particulars, whilst believed to be accurate are set out as a general outline only for guidance and do not constitute any part of an offer or contract. Intending purchasers should not rely on them as statements of representation of fact, but must satisfy themselves by inspection or otherwise as to their accuracy. No person in this firm's employment has the authority to make or give any representation or warranty in respect of the property.