



SIMPLY HOMES

Willowmead

Hertford SG14 2AT

Price Guide £500,000

Willowmead

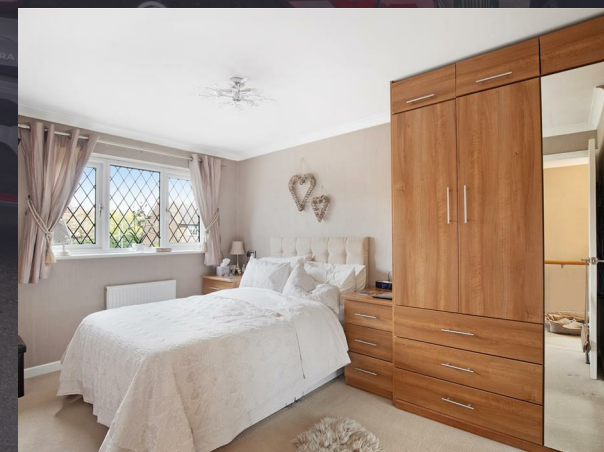
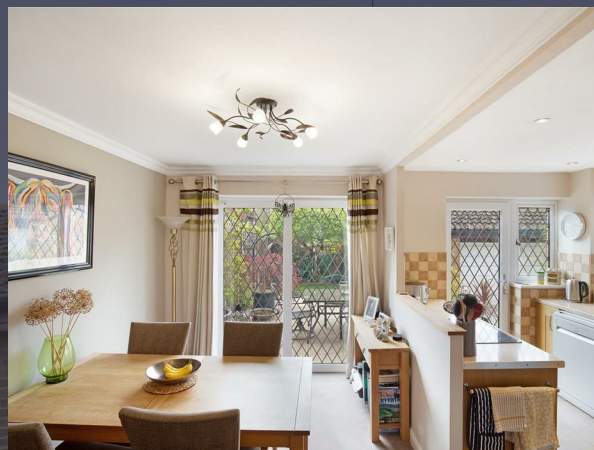
Hertford SG14 2AT

A three bedroom semi-detached home with modern kitchen/diner, fitted storage to the bedrooms, 2 car driveway, south facing sunny rear garden, garage and bonus reception room/bedroom. A short walk to Hertford North train line with links to Kings Cross and Moorgate and Hertford Town Centre.

Enter via the entrance hallway which leads to the living room via double doors, to the rear of the property is a dual aspect kitchen/diner with French Doors to the garden and a range of base and eye level units with integrated appliances.

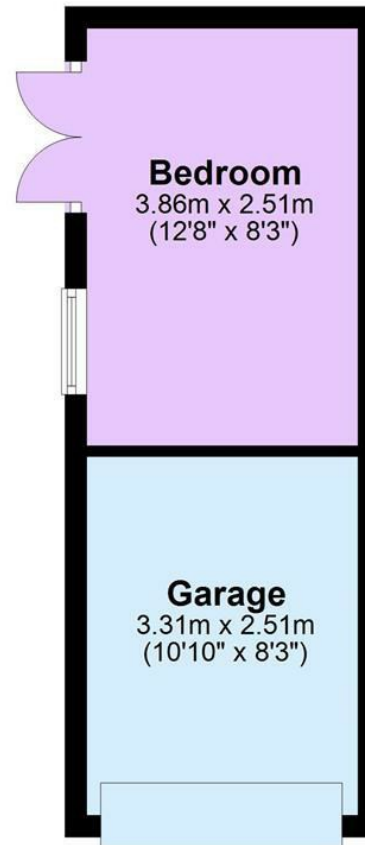
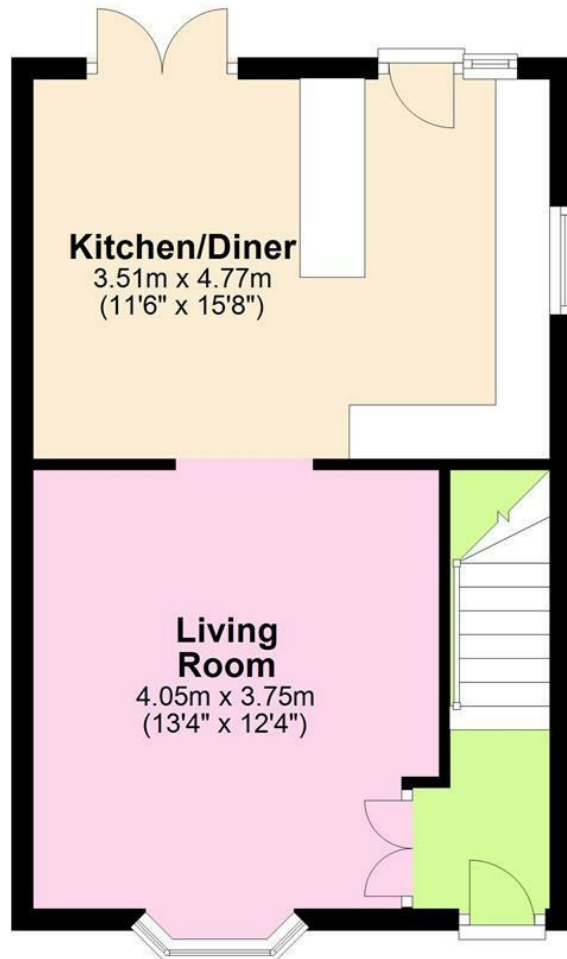
To the first floor there are two good sized double bedrooms with fitted storage and a single bedroom, also with fitted wardrobes. These bedrooms are served by a modern family bathroom.

To the exterior of the property there is a south facing private rear garden, driveway, garage and bonus bedroom/snug with heating, power and internet.



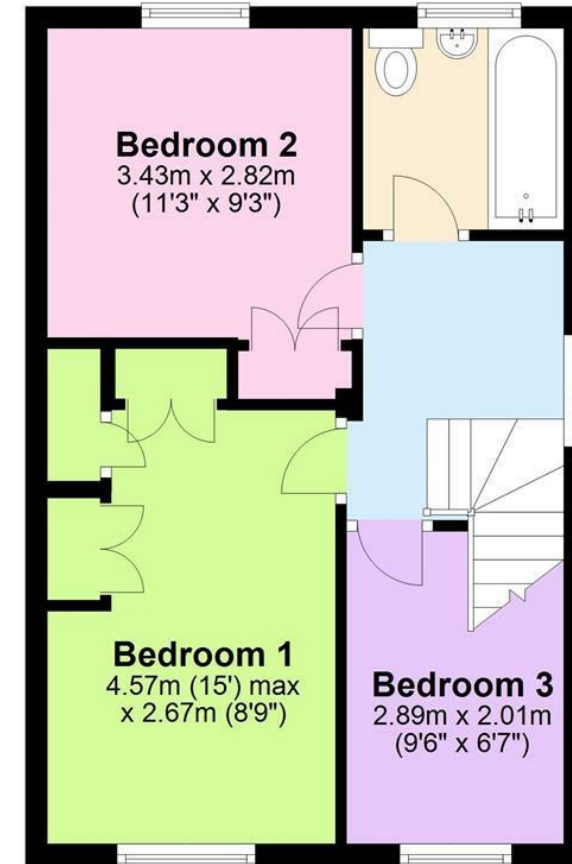
Ground Floor

Approx. 54.9 sq. metres (591.3 sq. feet)



First Floor

Approx. 36.1 sq. metres (388.7 sq. feet)



Total area: approx. 91.0 sq. metres (980.0 sq. feet)



SIMPLY HOMES

115 Fore Street | Hertford | SG14 1AS | 01992 558 557 | sales@simply-homes.co.uk | simply-homes.co.uk | Find us on

