

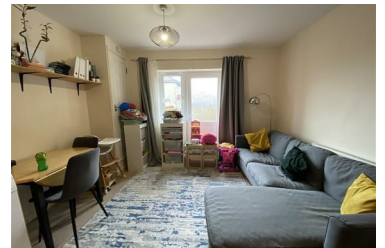


54 Church Road, Kingswood, Bristol, BS15 4BB

£900 PCM



*** ONE BEDROOM GARDEN FLAT IDEAL FOR A PROFESSIONAL SINGLE OR COUPLE ***



- PRIVATE GARDEN
- QUIET RESIDENTIAL AREA
- GREAT TRANSPORT LINKS
- NEAR KINGSWOOD HIGHSTREET
- WHITE GOODS INCLUDED
- PLENTY OF STREET PARKING
- IDEAL FOR A COUPLE OR SINGLE OCCUPANT
- AVAILABLE MAY 2025