



MAGGS  
& ALLEN

\*\*\* STUNNING FOUR BEDROOM FAMILY HOME IN WESTBURY PARK LOCATION - CLOSE PROXIMITY TO REDLAND GREEN SCHOOL \*\*\*

The spacious home is beautifully presented, arranged over 3 floors with a light and airy feel.

The ground floor comprises of a large front reception room with bay window and working wood burning fireplace, kitchen with sizeable connecting sitting/dining room with french doors leading to the rear garden. Downstairs W/C.

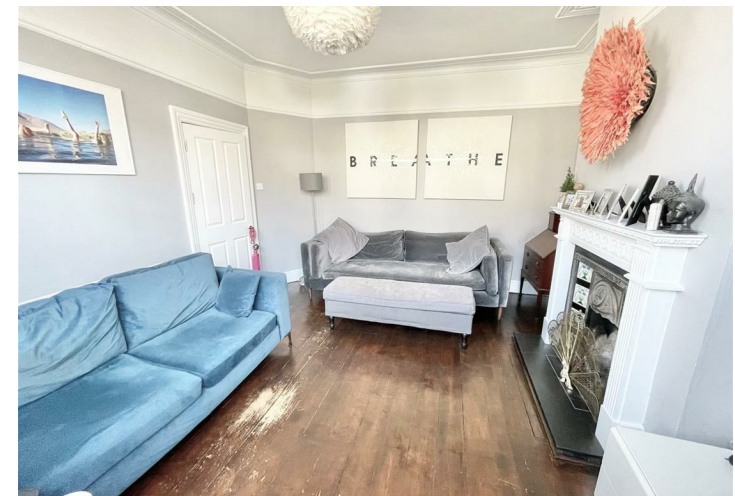
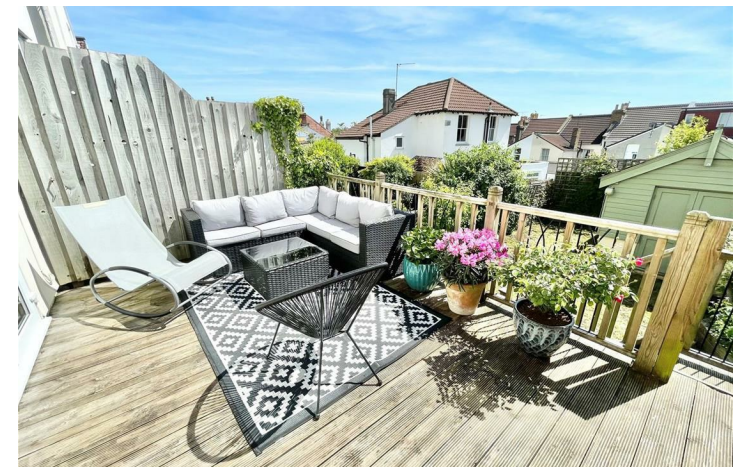
On to the first floor there is a single bedroom with built in desk and single bed frame (mattress not included), a further double bedroom at the rear with built in storage. huge master bedroom with bay window and large mirrored wardrobes. Family bathroom with bath and shower cubicle.

On the top floor you have a spacious double bedroom with en suite bathroom.

The house offers outdoor space, plenty of storage and is the perfect family home.

The property is within catchment area of the ofsted rated Outstanding Redland Green school.

This is available from November 2024.





- FOUR BEDROOM FAMILY HOME
- REDLAND GREEN CATCHMENT
- WESTBURY ON TRYM LOCATION
- SPACIOUS PROPERTY OVER THREE FLOORS
- LOVELY GARDEN
- LARGE PRIMARY BEDROOM
- ONE EN SUITE BEDROOM
- SPACIOUS RECEPTION
- AVAILABLE FROM NOVEMBER 2024

**Guide Price:** £2,750 PCM

**Tenure:**

**Council Tax Band:** D

**Local Authority:**

**Vendors Onward Position:**

**Viewing:** By appointment only.

**Contact Us:** 0117 949 9000

**Important Notice:** This information was provided at the time of instruction and may be incorrect or liable to change. Please contact the office to confirm any details.





60 Northumbria Drive, Henleaze, Bristol, BS9 4HW

**0117 949 9000**

[www.maggsandallen.co.uk](http://www.maggsandallen.co.uk) | [lettings@maggsandallen.co.uk](mailto:lettings@maggsandallen.co.uk)



**RICS**  
Regulated by RICS



Maggs & Allen use all reasonable endeavours to supply accurate property information in line with the Consumer Protection from Unfair Trading Regulations 2008. These property details do not constitute any part of the offer or contract and all measurements are approximate. It should not be assumed that this property has all the necessary Planning, Building Regulations or other consents. Any services, appliances and heating system(s) listed have not been checked or tested. Please note that in some instances the photographs may have been taken using a wide angled lens and please be advised that any site plans used within our particulars are for illustrative purposes only and may not be to scale. Any distance from schools are for guidance only and you should make your own enquiries with the local authority.