



15, Tovil Road, Maidstone, ME15 6QL
£295,000

About this property.....

Unlock the potential of this three-bedroom semi-detached home, offered chain-free and brimming with opportunity. Located just 0.8 miles from Maidstone West Station, it's perfectly positioned for convenience while offering a peaceful retreat with a long, south-easterly facing rear garden.

Step inside to a traditional entrance hall that leads to two large reception rooms and a separate kitchen. With ample scope to reconfigure, imagine transforming this space into a stunning open-plan kitchen-dining area that becomes the heart of the home. Upstairs, you'll find three generous bedrooms and a bright shower room, offering comfort and flexibility for families or guests.

A convenient garage adds practicality, while the overall layout invites creativity, whether you're dreaming of a modern renovation or a cozy refresh. This is more than just a house; it's a canvas for your imagination. With endless potential and a prime location, it's ready for you to make it your own.

Situation.....

Welcome to Maidstone, the vibrant county town of Kent, where an array of delights awaits to cater to your every desire. Shopaholics will be in paradise, as this charming town offers a captivating mix of one-of-a-kind stores and beloved high street brands, ensuring an unforgettable retail therapy experience. For foodies, the options are endless, from indulging in traditional afternoon tea to savouring fine dining experiences that tantalise the taste buds.

As the sun sets, Maidstone comes alive with its buzzing nightlife, offering a plethora of pubs, bars, and entertainment venues to suit all preferences. Whether you seek a cosy ambiance or a lively atmosphere, the town has something to satisfy every mood. For those who love the great outdoors, Maidstone has plenty to offer. Cruise down the serene River Medway on the delightful Kentish Lady or explore the region's charm and heritage through the numerous cycling and walking routes available.

Within minutes' walk, the convenience reaches new heights with the Maidstone East station, your direct gateway to the heart of London. Travel effortlessly to iconic destinations like London Bridge, Victoria, and Charing Cross from just 53 minutes, making work or leisure commutes an absolute breeze.









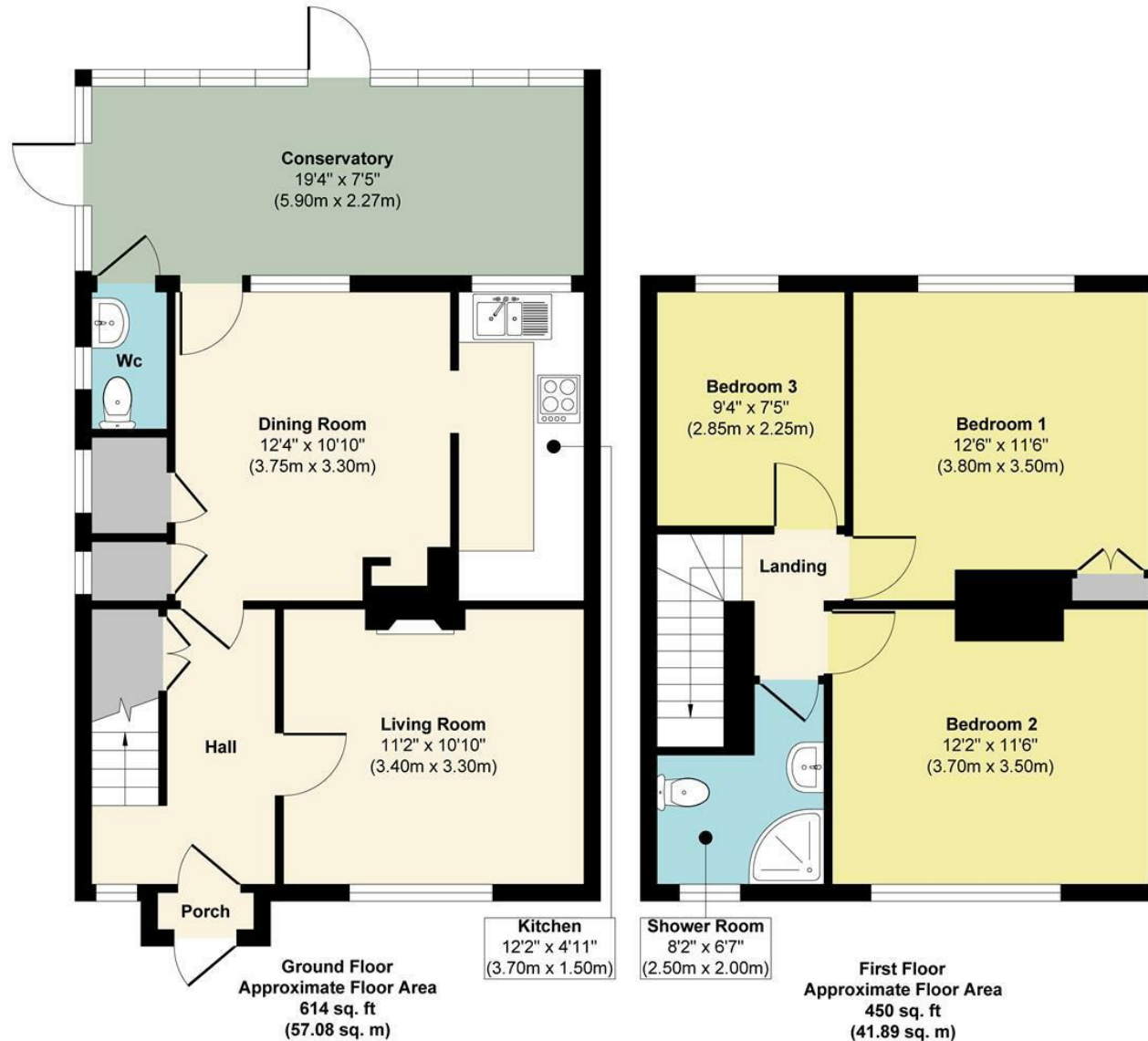


Three Bedroom Semi Detached Home
Huge Potential & Scope
Chain Free
Long South Easterly Facing
Updated Shower Room
New Boiler Installed Early 2024
0.8m To Maidstone West Train Station





15, Tovil Road, Maidstone, ME15 6QL



Approx. Gross Internal Floor Area 1064 sq. ft / 98.97 sq. m

Illustration for identification purposes only, measurements are approximate, not to scale.

Produced by Elements Property

Agents Notes

Floor plans produced for illustrative purposes only. The position and sizes of doors, windows, rooms and other items are approximate and no responsibility is taken for any error, omission or mis-statement. These particulars are produced for information only and do not form part of any contract. The agent has not had sight of any title documents. Fixtures, fittings and services not tested.



bluebell-estates.co.uk

