

Bluebell

ESTATES



26, Moncktons Lane, Maidstone, ME14 2PY
Offers In Excess Of £450,000

About this property.....

Tucked away on a peaceful private track, which is included within the sale, yet conveniently close to the heart of Maidstone, this attractive 3/4 bedroom home enjoys a wonderful balance of privacy and accessibility. Built approximately 17 years ago, the property offers well-proportioned and versatile accommodation ideal for families and professionals alike.

The accommodation comprises a generous principal bedroom with en-suite shower room, two further bedrooms, and a flexible ground floor study/fourth bedroom. A bright and spacious living/dining room creates an excellent space for both everyday living and entertaining, complemented by a well-appointed kitchen/breakfast room and separate utility room.

Outside, the property benefits from neatly maintained front and rear gardens designed for ease of upkeep, together with a substantial integral garage and block paved driveway providing ample off-road parking. The property is ready to accommodate a smooth and speedy purchase.

Situation.....

Nestled down a private track, this property offers a secluded location within easy reach of urban amenities and transportation links. Maidstone East station is a mere 3-minute drive (0.8 miles) away, providing swift access to London Bridge in just 52 minutes and Victoria in 1 hour and 3 minutes. For commuters seeking further connectivity, Ebbsfleet station is a convenient 22-minute drive (17 miles) distant, offering high-speed trains to London St Pancras in a mere 19 minutes. Nature enthusiasts will delight in the proximity to the River Medway, just a few minutes' walk away, offering scenic pathways for walks, runs, and bike rides along the riverbanks. Watersport aficionados can indulge in rowing and kayaking activities, with clubs conveniently situated nearby. Families will appreciate the proximity to two Ofsted-rated Good primary schools within a 5-minute drive, alongside an Ofsted-rated Good secondary school and girls' grammar just a stone's throw further. Additionally, the vibrant hub of Maidstone, with its multitude of shopping, dining, and entertainment options, is just minutes away by car, ensuring residents enjoy the perfect blend of tranquility and urban convenience.











What the owner says.....

We all love living on Monckton's Lane, surrounded by trees and nature, with a real sense of peace and tranquillity. We are just a two-minute walk from the river's edge, there are endless scenic walks right on our doorstep. It's been perfect for bike rides with our children and long dog walks. Despite its calm setting, the town centre is only a 15-minute stroll away, offering plenty of entertainment, restaurants, and amenities nearby, we have enjoyed many a Friday night date night at the local pub The Flowerpot. On warm days it's a beautiful walk up to The Malta Inn, enjoying a drink by the river watching the world go by. The house itself is easy to live in, comfortable, and wonderfully peaceful — the perfect balance of nature and convenience.



PRIVATE ROAD
NO ACCESS & NO PARKING

No. 24
Moncktons
Lane

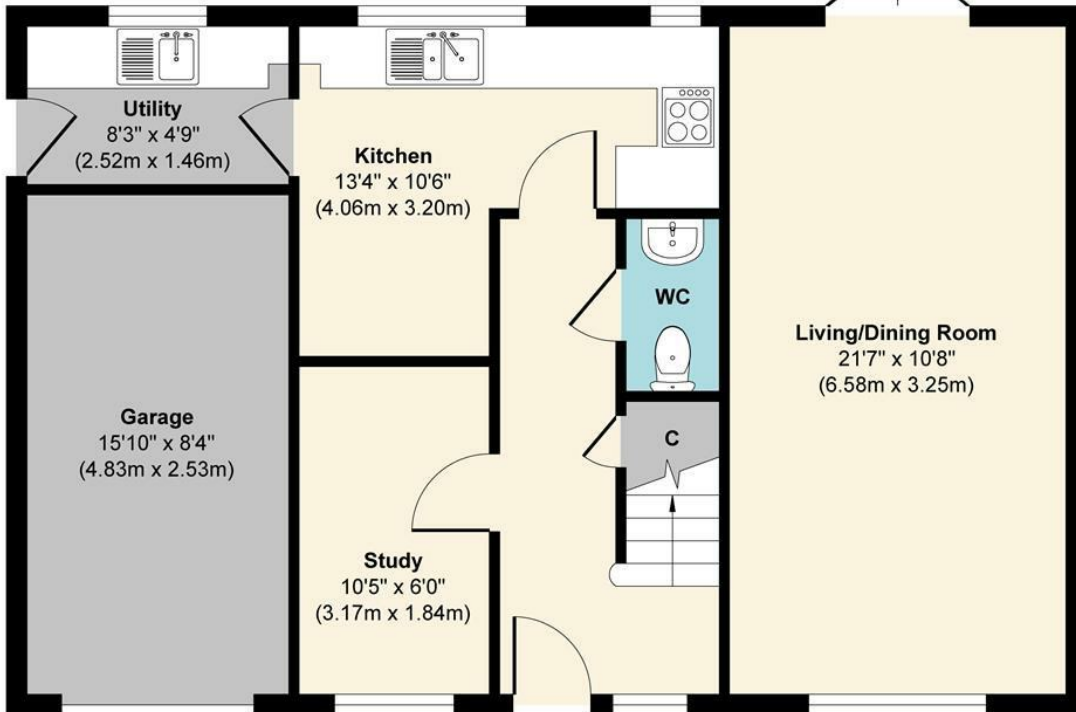
26

Moncktons Lane

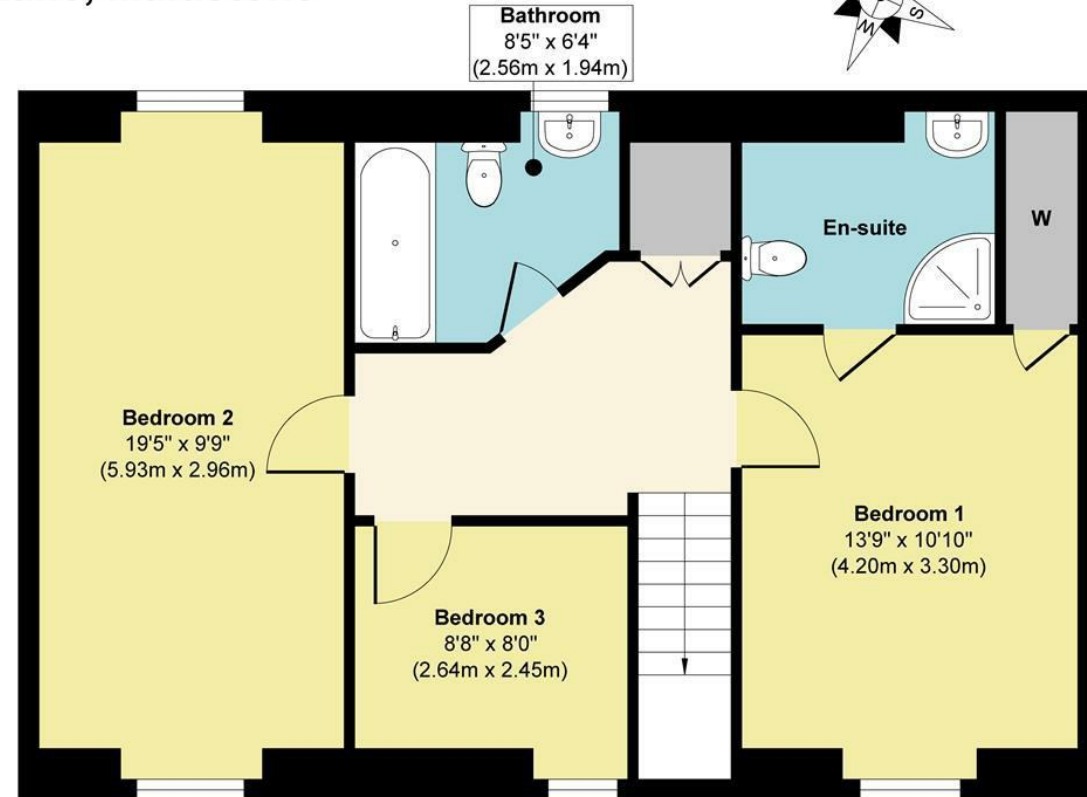


26, Moncktons Lane, Maidstone, ME14 2PY

26 Moncktons Lane, Maidstone



Ground Floor
Approximate Floor Area
698 sq. ft
(64.85 sq. m)



First Floor
Approximate Floor Area
661 sq. ft
(61.41 sq. m)

Approx. Gross Internal Floor Area 1359 sq. ft / 126.26 sq. m

Illustration for identification purposes only, measurements are approximate, not to scale.

Produced by Elements Property

Agents Notes

Floor plans produced for illustrative purposes only. The position and sizes of doors, windows, rooms and other items are approximate and no responsibility is taken for any error, omission or mis-statement. These particulars are produced for information only and do not form part of any contract. The agent has not had sight of any title documents. Fixtures, fittings and services not tested.





