

Bluebell

ESTATES



11, Rochester Road, Aylesford, ME20 7BS

£300,000

About this property.....

A beautifully presented two-bedroom cottage that has recently been redecorated throughout, creating a fresh and welcoming feel. The property benefits from brand-new carpets fitted throughout, a recently installed boiler (approximately three months old), a washer/dryer fitted around three months ago, and an integrated fridge freezer installed approximately six months ago. The accommodation also features a convenient ground-floor bathroom.

Outside, the property enjoys a low-maintenance courtyard garden, providing an ideal space for relaxing or entertaining. Presented in excellent condition throughout, this charming cottage is ready to move straight into and would make an ideal home for first-time buyers, downsizers, or investors alike.

Situation.....

Aylesford village is a true gem that we can't help but adore! It exudes an incredible community spirit and boasts an array of historic properties and enticing dining spots. Our top pick is The Little Gem, a traditional alehouse dating back to the 1100s. We also love The Chequers, a timber framed pub dating from 1511 that serves great food and boasts a stunning riverside terrace, alternatively you can grab a pint and some pub grub at The Bush. You'll have endless options for scenic strolls, with riverside walks, countryside hikes, and The Friars, an ancient religious house with a cafe, farmers market, and tranquil gardens right on the village's edge. Aylesford boasts a good rated primary school in the centre of the village and an outstanding rated primary just outside the village along with a secondary school in the wider Aylesford area. Shopaholics will relish the proximity of an M&S food store, Sainsbury's, and an Aldi just up the road. Commuters are well-catered too, with London-bound services (changing at Strood) from Aylesford station, while Ebbsfleet International is just 23 minutes away by car, with trains to London St. Pancras in a mere 19 minutes. Plus, both the M2 and M20 motorways are a stone's throw away. And if all that isn't enough, Maidstone's County Town is just 4 miles away, offering a plethora of retail, educational, and recreational facilities.





Gwendoline
11
Cottage



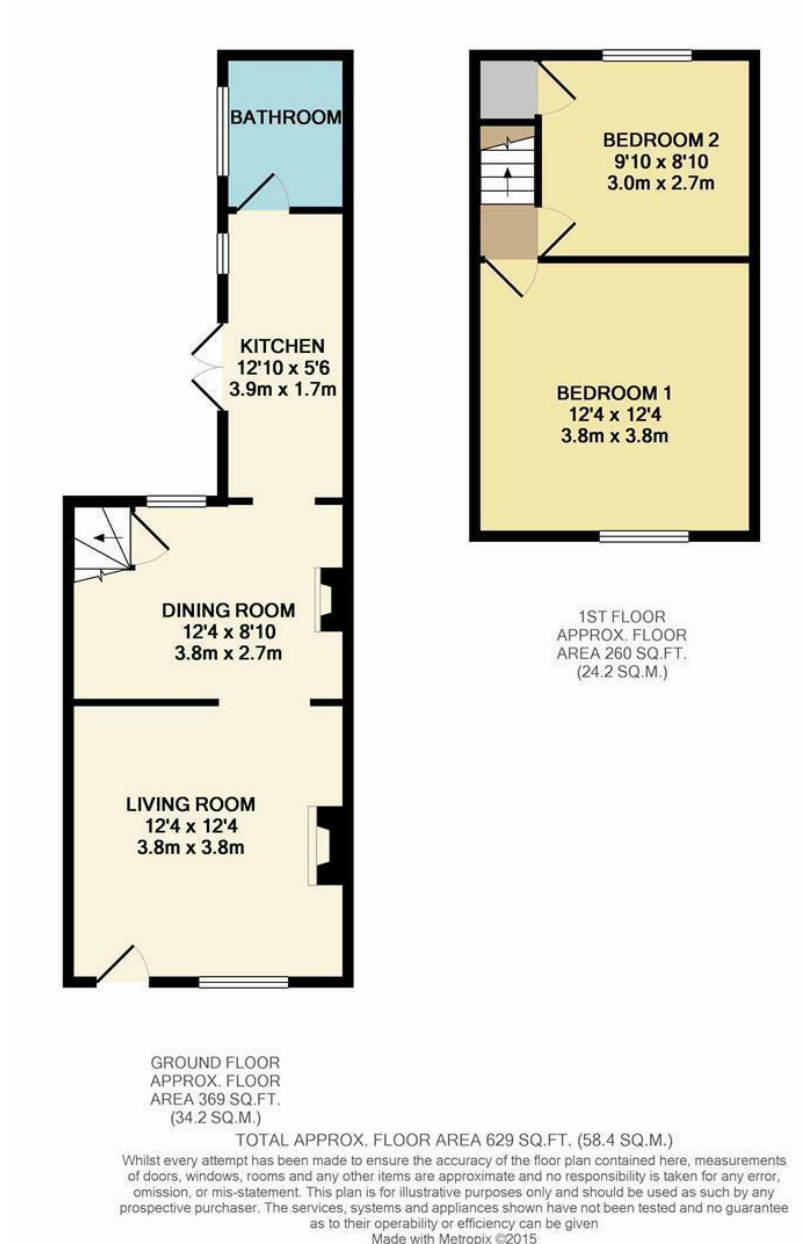


Useful Information.....

- Beautifully presented two-bedroom cottage
- Recently redecorated throughout to a high standard
- Brand-new carpets fitted throughout
- Ground-floor bathroom for added convenience
- New boiler installed approximately three months ago
- Washer/dryer replaced approximately three months ago
- Integrated fridge freezer installed approximately six months ago
- Low-maintenance courtyard garden, ideal for relaxing or entertaining
- Ready to move straight into with no immediate work required
- Sought-after Aylesford village location, close to local amenities, highly regarded schools, transport links and picturesque riverside walks



11, Rochester Road, Aylesford, ME20 7BS



Agents Notes

Floor plans produced for illustrative purposes only. The position and sizes of doors, windows, rooms and other items are approximate and no responsibility is taken for any error, omission or mis-statement. These particulars are produced for information only and do not form part of any contract. The agent has not had sight of any title documents. Fixtures, fittings and services not tested.

