

# Bluebell

ESTATES



12, Alma Road, Eccles, ME20 7HN  
Offers In Excess Of £285,000

## About this property.....

Located in the ever-popular village of Eccles, this attractive two-bedroom property effortlessly combines stylish design with village appeal.

Step inside to the to discover a spacious open-plan lounge and dining area, perfect for both relaxed evenings and lively gatherings. Upstairs, two well-proportioned double bedrooms offer comfortable accommodation, accompanied by a stylish family bathroom.

Outside, a contemporary low-maintenance garden provides a peaceful retreat with minimal upkeep required. The property also benefits from two allocated parking spaces and is a stones throw away from the local park, making it ideal for anyone seeking convenience and comfort in a picturesque setting.

## Situation.....

If you have a soft spot for tranquil countryside strolls, Eccles is the perfect village for you. Discover Neolithic stones at Kits Coty or take in the idyllic Chapel Down vineyards on your leisurely walk. Cap off your excursion with a stop at the dog-friendly village pub, The Red Bull. Just beyond the village lies The Friars, an ancient religious house open to visitors and offering a serene garden, cafe, and farmers market. If you have young children and prefer a quaint village school, St. Marks primary school is a mere stone's throw away, boasting a Good rating in the latest Ofsted inspection and serving around 120 pupils (as at 2022). Local amenities include a village shop with postal services and a doctors' surgery complete with a dispensing chemist. For commuters, the M2 at the top of nearby Blue Bell Hill or the M20 at the bottom are easily accessible. Eccles village is a mere 22-minute drive (16 miles) from Ebbsfleet International Station, offering frequent trains to London St. Pancras in as little as 19 minutes.







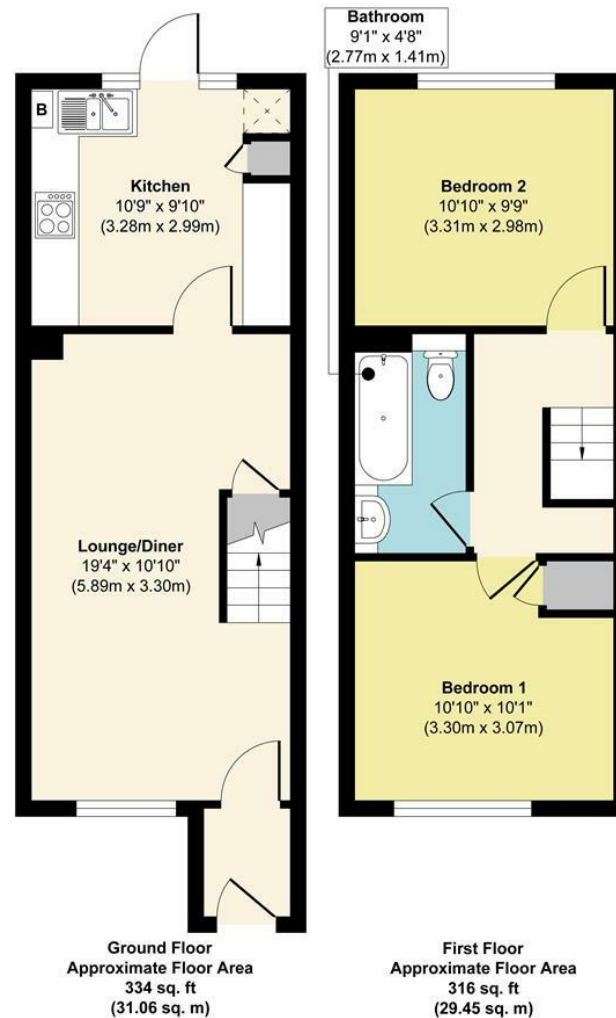


What the owner says.....



12, Alma Road, Eccles, ME20 7HN

## 12 Alma Road



**Approx. Gross Internal Floor Area 650 sq. ft / 60.51 sq. m**

Illustration for identification purposes only, measurements are approximate, not to scale.

Produced by Elements Property

### Agents Notes

Floor plans produced for illustrative purposes only. The position and sizes of doors, windows, rooms and other items are approximate and no responsibility is taken for any error, omission or mis-statement. These particulars are produced for information only and do not form part of any contract. The agent has not had sight of any title documents. Fixtures, fittings and services not tested.



[bluebell-estates.co.uk](http://bluebell-estates.co.uk)