



545, Maidstone Road, Blue Bell Hill, Chatham, ME5 9QP
£425,000

About this property.....

Step inside this stunning 2-bedroom detached chalet bungalow and prepare to be impressed. Beautifully maintained and finished to a high standard throughout, it offers a perfect blend of elegance and ease. The generous living room is bathed in natural light, creating a warm and inviting space to relax or entertain, while the sleek modern kitchen — complete with a central island — is ideal for cooking, dining, and socialising. Every detail has been thoughtfully designed to make this a home you can move straight into and enjoy from day one.

Outside, the appeal continues with a driveway and garage providing ample parking and storage. The garden is complemented by a versatile outdoor cabin — perfect as a home office, creative studio, or additional storage — giving you the flexibility to adapt the space to your lifestyle. This is more than just a property; it's a ready-made haven for modern living, and opportunities like this don't come along often.

Situation.....

Blue Bell Hill Village, located close to the town of Chatham and historic city of Rochester, offers a charming and picturesque setting that perfectly balances rural tranquility with convenient access to urban amenities. This quaint village is renowned for its stunning natural beauty, featuring rolling hills, lush woodlands, and expansive views of the Kent countryside. Residents enjoy a peaceful lifestyle with the benefit of several local amenities, including a traditional pub, and a community centre that hosts various events and activities.

The village is ideally located for commuters, with excellent transport links to London via the M2 motorway and nearby rail services from Chatham, as well as high-speed trains into London St Pancras from Ebbsfleet station in just 19 minutes which is just 18 minutes (13 miles) away by car, providing a perfect retreat after a busy day in the city. Outdoor enthusiasts will appreciate the myriad of walking and cycling paths that meander through the surrounding landscape, including the famed North Downs Way.







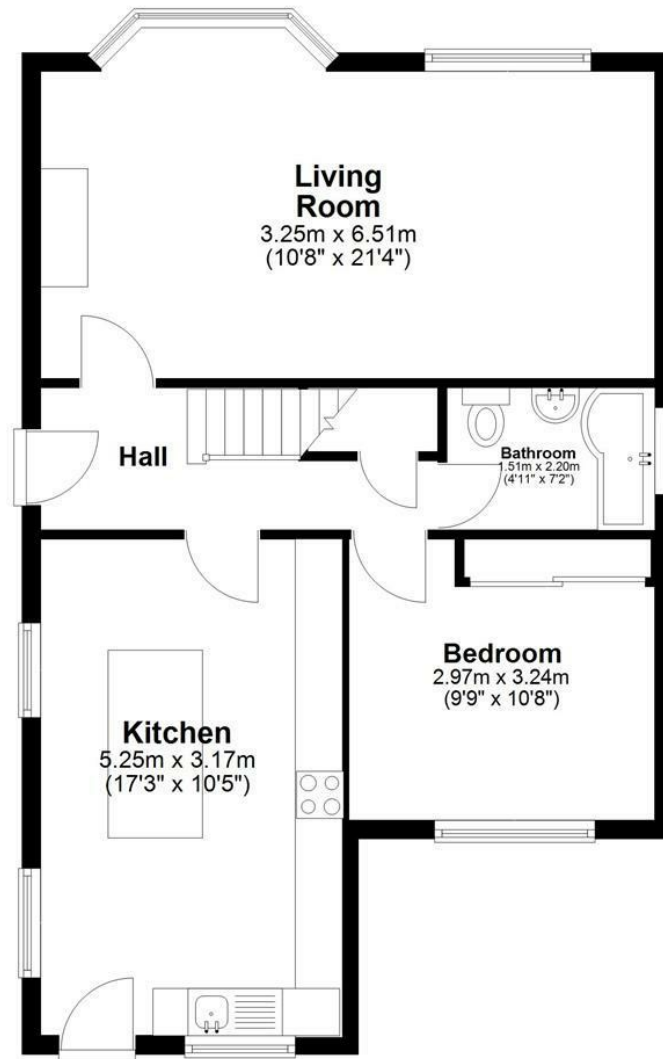


What the owner says.....

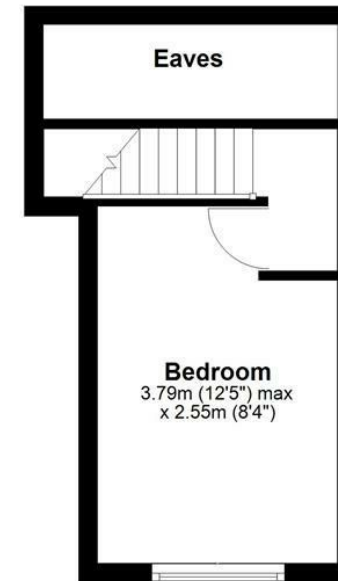


545, Maidstone Road, Blue Bell Hill, Chatham, ME5 9QP

Ground Floor



First Floor



Total area: approx. 74.8 sq. metres (804.9 sq. feet)

Agents Notes

Floor plans produced for illustrative purposes only. The position and sizes of doors, windows, rooms and other items are approximate and no responsibility is taken for any error, omission or mis-statement. These particulars are produced for information only and do not form part of any contract. The agent has not had sight of any title documents. Fixtures, fittings and services not tested.



bluebell-estates.co.uk

