



MAGGS
& ALLEN

3 GREENFIELD AVENUE
WESTBURY-ON-TRYM, BRISTOL, BS10 5LN
£425,000

A beautifully presented, three-bedroom family home located on a quiet cul-de-sac, boasting a sunny rear garden, substantial garden room / studio and off-road parking. Offered to the market with no onward chain.

Ground floor

Entering via original front door, you will find a bright entrance hall with stripped wooden floorboards, understairs storage, and access to a useful utility cupboard. This in turn leads to a beautiful front reception room, complete with typical 1930s features including a large bay window to front, feature fireplace, picture rails and stripped floorboards. This is open-plan to the rear reception room, which is currently being used as a dining space and encompasses the same original features, with double doors opening onto the rear garden.

The kitchen is adjacent, and consists of a range of matching wall and base-mounted units with shaker style fronts and solid oak work surfaces. Integrated appliances include a fridge/freezer, dishwasher, electric oven, electric hob with extractor and composite sink with draining board.

First Floor

Stairs rise to the first floor landing, with a large window to the side elevation allowing natural light to flood the space. Here, there are three sizeable bedrooms, with the master benefitting from fitted wardrobes and views over the rear garden. Bedroom two is a spacious double bedroom with a feature fireplace, and the remaining bedroom is a generous single. The bathroom has been recently fitted, and comprises a three-piece suite of bath with mains shower over, sink with vanity unit and toilet.

Externally & Studio

To the front, you will find a block paved driveway offering parking for one car, plus a well-maintained front garden which is primarily laid to lawn with mature olive trees to the front border.

The rear garden offers a private feel, whilst benefitting from a sunny, westerly aspect and is laid to lawn with a patio area, mature borders and a path leading to the studio.

The studio is a fantastic, converted double garage which is currently being utilised as an office and music studio, with sliding doors onto the rear garden. This useful space offers potential for use as storage, a recreational space or conversion to an annexe or extra bedroom.

Location

Westbury-on-Trym is a village on the outskirts of Bristol city centre dating back over a 1000 years. Named after the River Trym running through it, with a strong community feel, centred around The Holy Trinity Church. At the heart of the village is a war memorial where the three main shopping streets converge. The village boasts a good selection of local independent shops as well as cafes, banks, restaurants and family friendly pubs.

The village is ideally suited to the needs of growing families offering excellent local schools including Westbury-on-Trym Church of England Academy, Elmlea Infant School, Elmlea Junior School and Bristol Free School. The jewel in its crown has to be the ever-popular Canford Park - a family friendly recreational space with playground, tennis courts, football pitches and a bowling green.

Well-known for its 1930s architecture and well-sized gardens, Westbury-on-Trym is a stones-throw from open green spaces of The Downs, just 3 miles from the city centre and providing excellent public transport and easy access to the motorway network and Cribbs Causeway shopping centre.

Schools

Horfield Church of England Primary School approx. 0.3km

St Teresa's Catholic Primary School approx. 0.5km

Badocks Wood E-ACT Academy approx. 0.8km

Orchard School Bristol approx. 1.1km

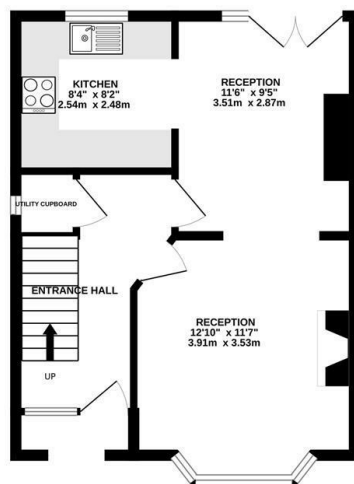
If you have a property to sell and would like a no obligation market appraisal, please contact the office on 0117 949 9000.



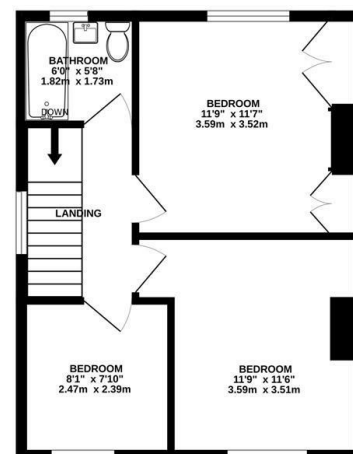
BASEMENT
260 sq.ft. (24.2 sq.m.) approx.



GROUND FLOOR
405 sq.ft. (37.6 sq.m.) approx.



1ST FLOOR
401 sq.ft. (37.3 sq.m.) approx.



TOTAL FLOOR AREA : 1066 sq.ft. (99.1 sq.m.) approx.

Whilst every attempt has been made to ensure the accuracy of the floorplan contained here, measurements of doors, windows, rooms and any other items are approximate and no responsibility is taken for any error, omission or mis-statement. This plan is for illustrative purposes only and should be used as such by any prospective purchaser. The services, systems and appliances shown have not been tested and no guarantee as to their operability or efficiency can be given.
Made with Metropix ©2025



- Characterful, three bedroom family home
- Located on a quiet cul-de-sac
- Recently modernised with character features retained
- Private, westerly-facing rear garden
- Beautifully presented throughout
- Large external studio offering huge potential
- Off-road parking for one car

Guide Price: £425,000

Tenure: Freehold

Council Tax Band: C

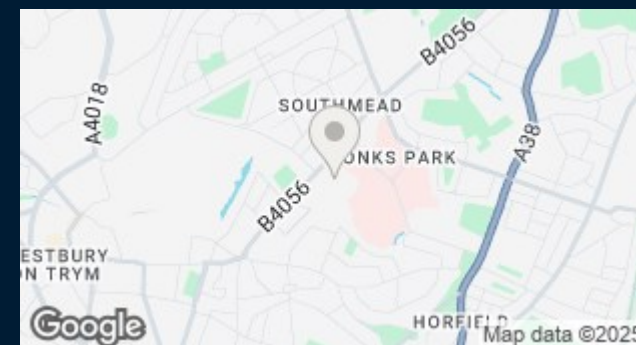
EPC Rating: D

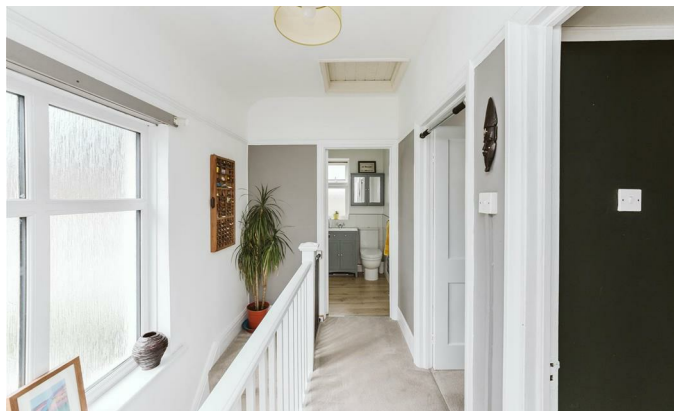
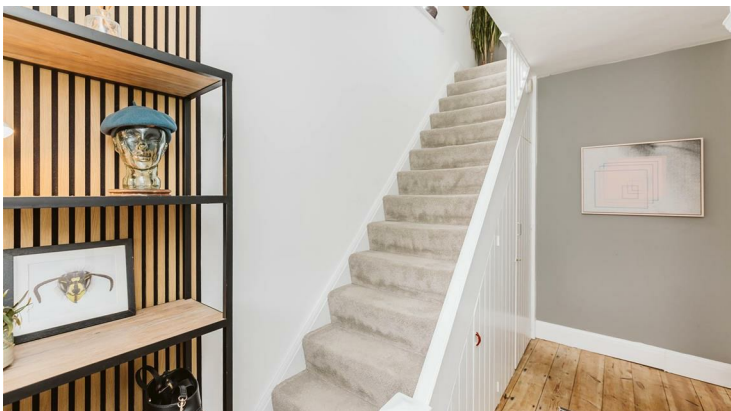
Local Authority: Bristol City Council

Viewing: By appointment only.

Contact Us: 0117 949 9000

Important Notice: This information was provided at the time of instruction and may be incorrect or liable to change. Please contact the office to confirm any details.





60 Northumbria Drive, Henleaze, Bristol, BS9 4HW
 0117 949 9000
www.maggsandallen.co.uk | agency@maggsandallen.co.uk



Maggs & Allen use all reasonable endeavours to supply accurate property information in line with the Consumer Protection from Unfair Trading Regulations 2008. These property details do not constitute any part of the offer or contract and all measurements are approximate. It should not be assumed that this property has all the necessary Planning, Building Regulations or other consents. Any services, appliances and heating system(s) listed have not been checked or tested. Please note that in some instances the photographs may have been taken using a wide angled lens and please be advised that any site plans used within our particulars are for illustrative purposes only and may not be to scale. Any distance from schools are for guidance only and you should make your own enquiries with the local authority.