



Hadrian Court | Sherburn in Elmet | LS25 6QB

£240,000

Three bedroom mid town house | Council Tax Band C | EPC Rating A

Emsleys | estate agents

*****TUCKED AWAY POSITION. IDEAL FIRST TIME BUYER OPPORTUNITY. CLOSE TO AMENITIES.*****

A recently constructed property which offers a modern and comfortable living space, perfect for families or professionals seeking a stylish home.

As you enter, you are greeted by a spacious reception room that provides an inviting atmosphere for relaxation and entertaining. The layout is designed to maximise space and light, creating a warm and welcoming environment. The house features three well-proportioned bedrooms, each offering ample room for furnishings and personal touches, making it easy to create your own sanctuary.

The property includes a contemporary bathroom, thoughtfully designed to meet the needs of modern living. With its clean lines and stylish fixtures, it provides a perfect space for unwinding after a long day.

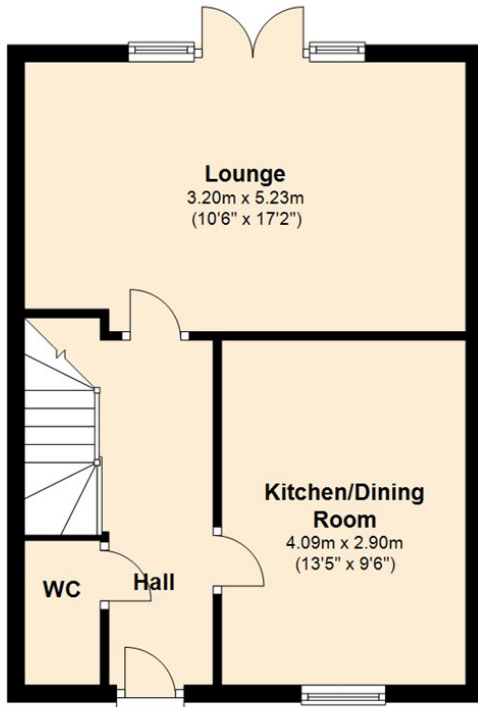
For those with vehicles, the property offers convenient parking for one vehicle, ensuring ease of access and security, along with an enclosed rear garden to relax or entertain in. The location in Sherburn is ideal, providing a peaceful residential setting while still being within reach of local amenities and transport links.

This mid-town house is not just a place to live; it is a home where memories can be made. With its new build status, you can enjoy the benefits of modern construction and energy efficiency. If you are looking for a property that combines comfort, style, and practicality, this home in Hadrian Court is certainly worth considering.

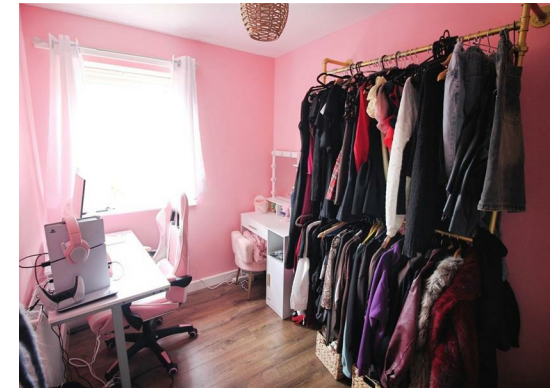
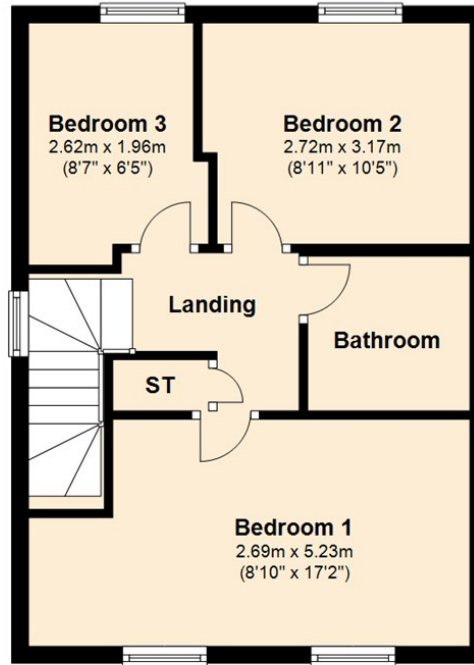




Ground Floor



First Floor



These details are for guidance only and complete accuracy cannot be guaranteed. If there is any point, which is of particular importance, verification should be obtained. They do not constitute a contract or part of a contract. All measurements are approximate. No guarantee can be given with regard to planning permissions or fitness for purpose. No apparatus, equipment, fixture or fitting has been tested. Items shown in photographs are NOT necessarily included. Interested Parties are advised to check availability and make an appointment to view before travelling to see a property.

4 Wolsey Parade | Sherburn In Elmet | Leeds | LS25 6BQ
t: 01977 680088 www.emsleysestateagents.co.uk

Emsleys | estate agents