



The Fairway | Sherburn In Elmet | LS25 6LN

£289,950

Three bedroom detached house | Council Tax Band D | EPC Rating C

Emsleys | estate agents

*****SUPERBLY PRESENTED. ENVIABLE CORNER POSITION.
CONSERVATORY.*****

A charming detached property which is well presented, positioned on a corner plot. This dwelling boasts a well-thought-out layout, including three spacious bedrooms, a family bathroom, and a generous kitchen/diner. This property offers ample space for everyone in the family. The kitchen is the heart of the home, offering plenty of room for cooking and dining.

As a bonus, this property features two reception rooms, the second of which is the conservatory with roof conversion providing you with additional space for relaxation or entertaining. They can serve as a living room, a study, or be transformed into any space that suits your lifestyle.

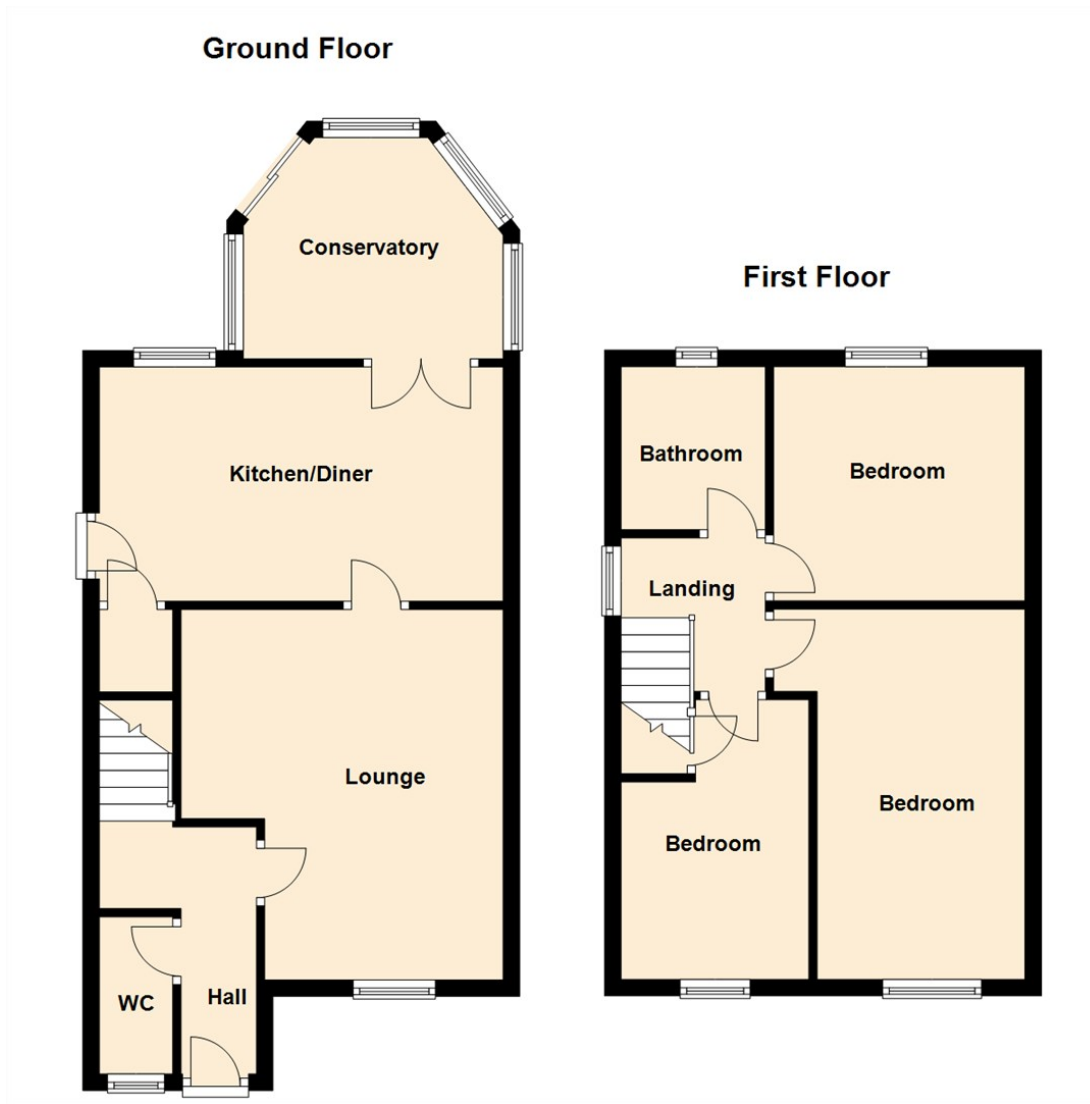
For those who enjoy the outdoors, this property offers a delightful garden, an ideal space for outdoor entertaining or for children to play. Additionally, the house comes with a garage and parking facilities.

The property is well-situated with excellent public transport links, local amenities, and schools nearby. The strong local community makes it a great place to live and an ideal setting for families or those seeking a friendly neighbourhood.

Overall, this property, with its unique features and prime location, is a rare find. I would encourage interested parties to arrange a viewing at their earliest convenience as properties of this type do not stay on the market for long.







These details are for guidance only and complete accuracy cannot be guaranteed. If there is any point, which is of particular importance, verification should be obtained. They do not constitute a contract or part of a contract. All measurements are approximate. No guarantee can be given with regard to planning permissions or fitness for purpose. No apparatus, equipment, fixture or fitting has been tested. Items shown in photographs are NOT necessarily included. Interested Parties are advised to check availability and make an appointment to view before travelling to see a property.

4 Wolsey Parade | Sherburn In Elmet | Leeds | LS25 6BQ
 t: 01977 680088 www.emsleysestateagents.co.uk

Emsleys | estate agents