



Fairfield Link | Sherburn In Elmet | LS25 6LT

£300,000

Four bedroom semi-detached | Council Tax Band D | EPC Rating B

Emsleys | estate agents

*****STUNNING FAMILY HOME IN POPULAR LOCATION. DECEPTIVELY SPACIOUS. POPULAR LOCATION. *****

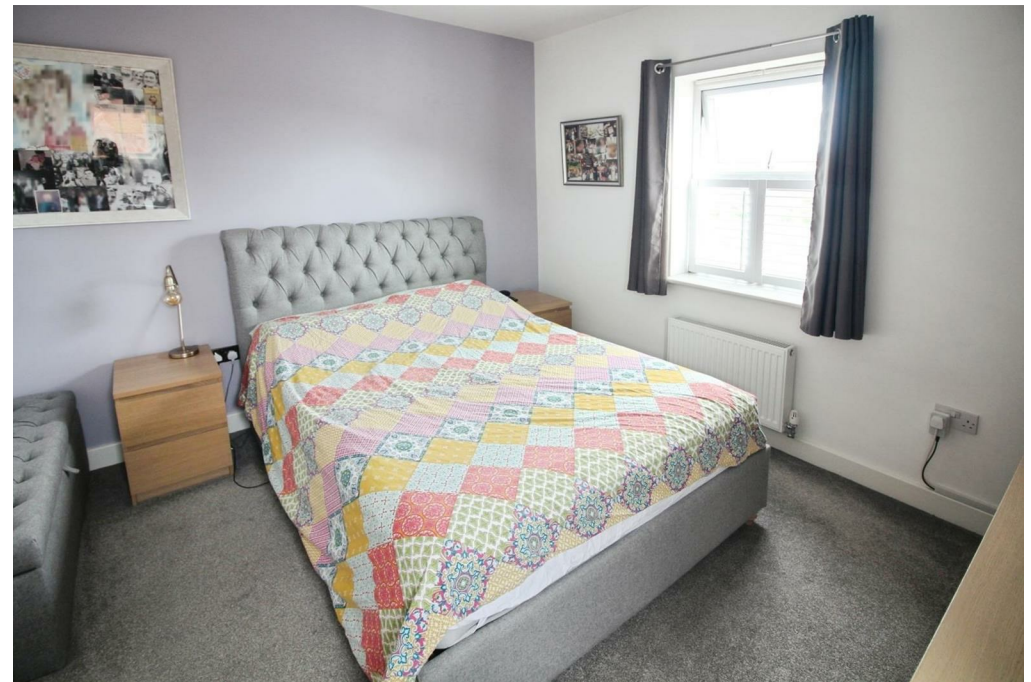
Situated on the corner of the central green space within the heart of the 'STRATA PANACHE' development.

This is a striking contemporary designed home set over THREE FLOORS with FOUR DOUBLE BEDROOMS, kitchen/diner, lounge opening out onto the landscaped GARDEN and with an EN-SUITE TO THE MASTER.

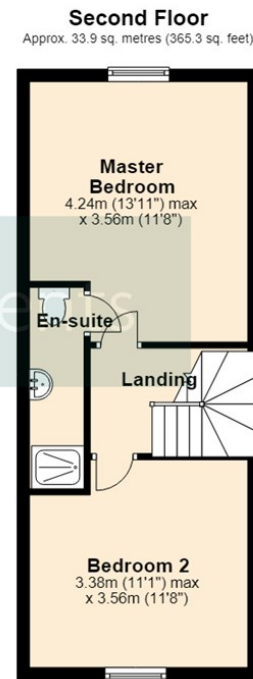
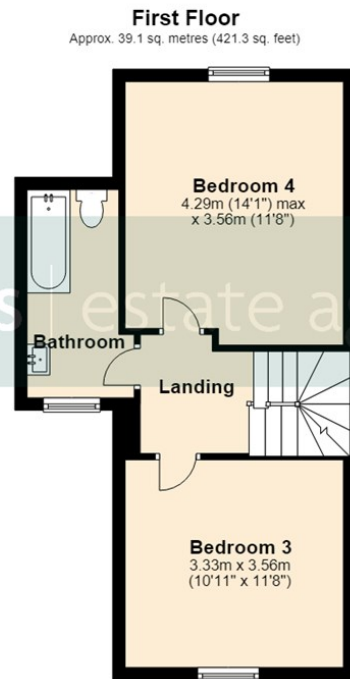
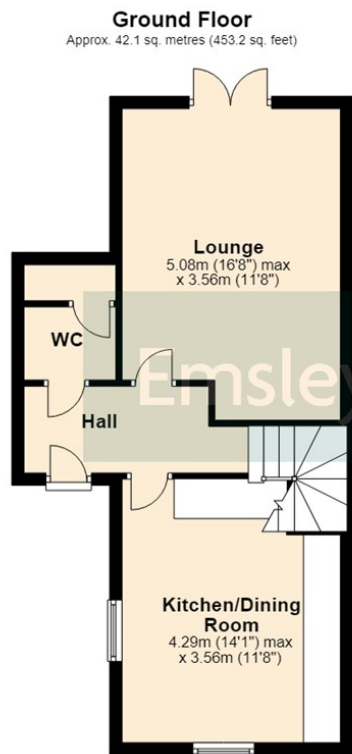
Designed over three floors and has four double bedrooms with a private garage. The home has a side entrance hallway, which leads into the kitchen and dining area. The updated kitchen has an integrated appliance and stainless steel sink with mixer tap. The living room at the back of the home features high ceilings and French doors to the rear garden. There is also a ground floor cloakroom/WC.

There are two double bedrooms on the first floor and a bathroom with the two remaining bedrooms occupying the second floor, with the master bedroom which has its own en-suite.

Within easy reach of amenities and motorway networks. A landscaped enclosed garden completes this lovely family home. CALL NOW TO ARRANGE YOUR VIEWING OR REQUEST VIA OUR WEBSITE 24/7.







Total area: approx. 115.2 sq. metres (1239.8 sq. feet)

These details are for guidance only and complete accuracy cannot be guaranteed. If there is any point, which is of particular importance, verification should be obtained. They do not constitute a contract or part of a contract. All measurements are approximate. No guarantee can be given with regard to planning permissions or fitness for purpose. No apparatus, equipment, fixture or fitting has been tested. Items shown in photographs are NOT necessarily included. Interested Parties are advised to check availability and make an appointment to view before travelling to see a property.



4 Wolsey Parade | Sherburn In Elmet | Leeds | LS25 6BQ
t: 01977 680088 www.emsleysestateagents.co.uk

Emsleys | estate agents