



Highfield Villas | Sherburn In Elmet | LS25 6AJ

£180,000

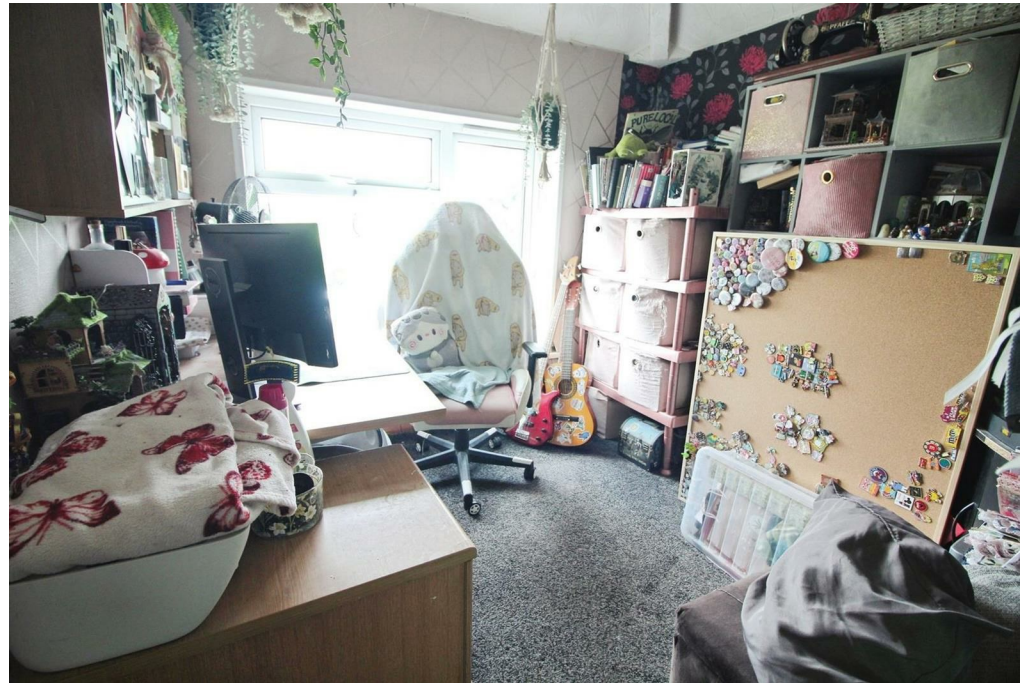
Three bedroom semi-detached house | Council Tax Band A | EPC Rating D

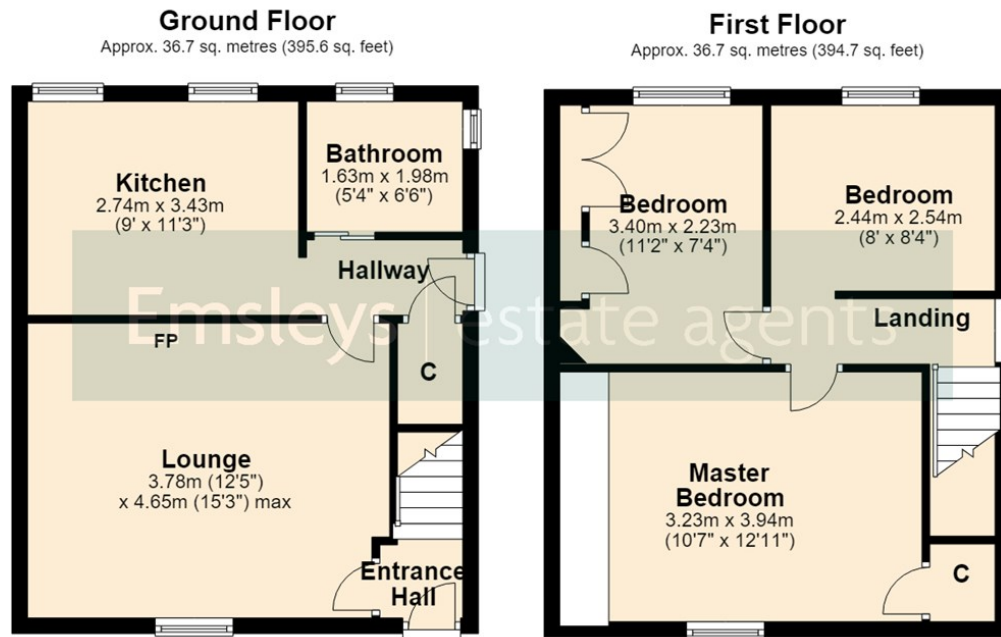
**Emsleys** | estate agents

**\*\*\*CLOSE TO AMENITIES. LARGE PLOT. FAR REACHING VIEW TO REAR. IDEAL FIRST TIME BUYER OPPORTUNITY.\*\*\***

Set on an a large plot with superb panoramic views over fields to rear, is this well appointed three bedroom semi-detached family home. The property briefly comprises of an entrance hall, lounge, further hallway accessing a kitchen, ground floor bathroom and three double first floor bedrooms. Having majority PVCu double-glazing and gas central heating system. The exterior has a large front garden which is half laid to lawn and half pebbled, access to the rear via a footway with a large rear well enclosed garden having a laid to lawn area with footway which is flagged, leading to a further pebbled area with garden shed and with panoramic views over fields. Set within easy reach of Sherburn In Elmet and South Milford, an ideal starter home with plenty of potential. Easy access to M62/A1 motorway network with great commuter links to Leeds, York, Selby, York, Pontefract, Wakefield. Overall an affordable three bedroom semi-detached home. With few of these available, demand will be high, call now to arrange your viewing.







Total area: approx. 73.4 sq. metres (790.3 sq. feet)

These details are for guidance only and complete accuracy cannot be guaranteed. If there is any point, which is of particular importance, verification should be obtained. They do not constitute a contract or part of a contract. All measurements are approximate. No guarantee can be given with regard to planning permissions or fitness for purpose. No apparatus, equipment, fixture or fitting has been tested. Items shown in photographs are NOT necessarily included. Interested Parties are advised to check availability and make an appointment to view before travelling to see a property.



4 Wolsey Parade | Sherburn In Elmet | Leeds | LS25 6BQ

t: 01977 680088    [www.emsleysestateagents.co.uk](http://www.emsleysestateagents.co.uk)

**Emsleys** | estate agents