



Heather Drive | Sherburn In Elmet | LS25 6PW

£315,000

Four bedroom semi-detached | Council Tax Band C | EPC Rating C

Emsleys | estate agents

***TUCKED AWAY LOCATION. WELL PRESENTED THROUGHOUT. LARGE FAMILY HOME. ***

A delightful semi-detached house found tucked away on Heather Drive offering a perfect blend of modern living and comfort. This three-storey property boasts a spacious layout with a conventional setup, making it an ideal family home.

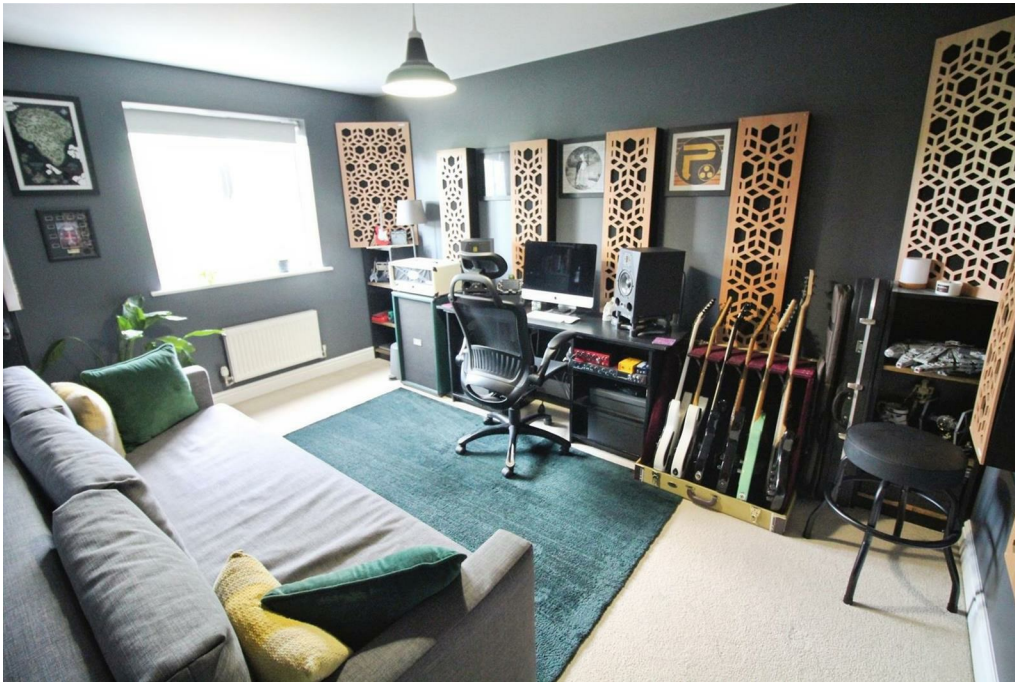
Upon entering the hall with a WC off, you are welcomed into a generous reception room that provides a warm and inviting atmosphere as the heart of the home, perfect for both relaxation and entertaining. A modern kitchen/diner, which is designed to cater to all your culinary needs while offering ample space for family meals and gatherings compliments the living space and ground floor living.

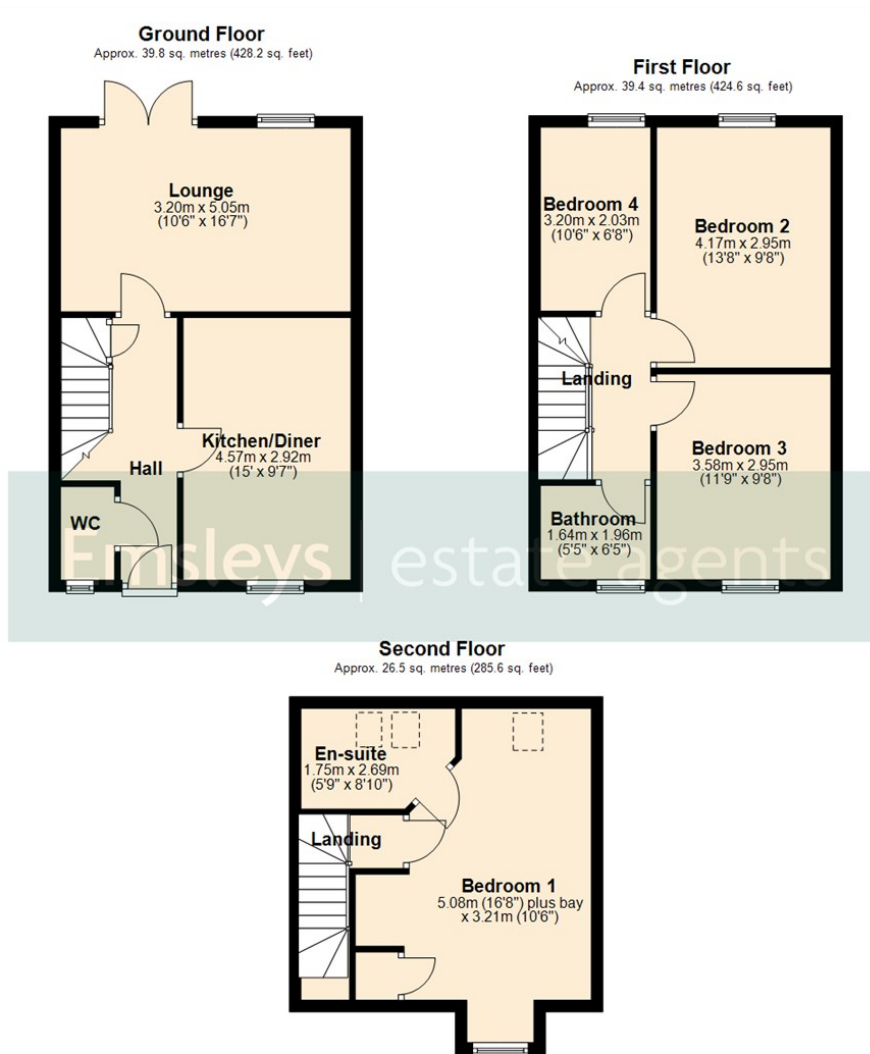
This property features four well-proportioned bedrooms, providing plenty of room for family members or guests with the master having fitted wardrobes. With two recently updated and modernised bathrooms, morning routines will be a breeze, ensuring convenience for everyone in the household.

Outside, the enclosed private garden offers a tranquil retreat, ideal for enjoying sunny days or hosting barbecues with friends and family. The garden is South Westerly facing so it gets plenty of sun. There is also a public bridleway behind the garden giving additional privacy from the rear. Additionally, the property benefits from parking for up to three vehicles including the single garage, a valuable asset in today's busy world.

With its contemporary design and thoughtful layout, this home is perfect for those seeking a blend of style and practicality in a sought-after location. Don't miss the opportunity to make this lovely property your own. Management charges paid 6 monthly and last charge was for £192.50.







Total area: approx. 105.8 sq. metres (1138.4 sq. feet)

These details are for guidance only and complete accuracy cannot be guaranteed. If there is any point, which is of particular importance, verification should be obtained. They do not constitute a contract or part of a contract. All measurements are approximate. No guarantee can be given with regard to planning permissions or fitness for purpose. No apparatus, equipment, fixture or fitting has been tested. Items shown in photographs are NOT necessarily included. Interested Parties are advised to check availability and make an appointment to view before travelling to see a property.



4 Wolsey Parade | Sherburn In Elmet | Leeds | LS25 6BQ
t: 01977 680088 www.emsleysestateagents.co.uk

Emsleys | estate agents