



Haigh Side Drive | Rothwell | LS26 0TE

£220,000

Two bedroom semi-detached bungalow | Council Tax Band B | EPC Rating TBC

Emsleys | estate agents

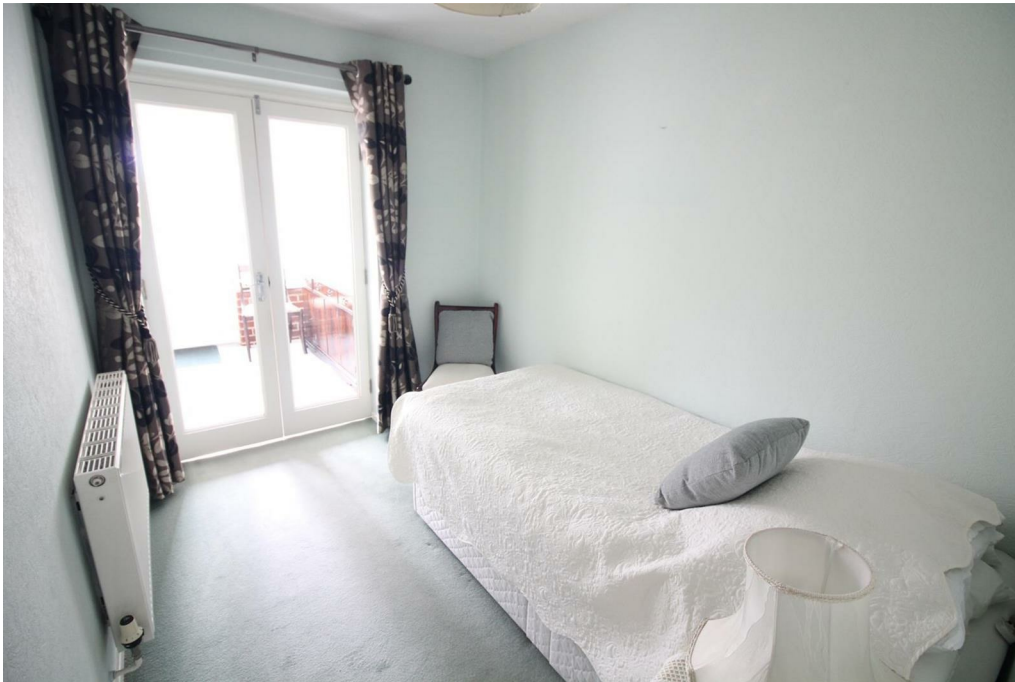
*****WELL PRESENTED THROUGHOUT. NO CHAIN & VACANT POSSESSION. SOUGHT AFTER LOCATION.*****

A delightful semi-detached bungalow which offers a perfect blend of comfort and convenience. With two inviting reception rooms, this property provides ample space for relaxation and entertaining. The two well-proportioned bedrooms are ideal for a couple or those seeking a peaceful retreat. The bungalow features a well-appointed shower room, ensuring all your essential needs are met. One of the standout features of this home is the private resin drive which is a rare find in the area. The resin driveway adds a touch of modern elegance, while the surrounding garden offers a lovely outdoor space for enjoying the fresh air.

Additionally, the property boasts a storage garage, providing extra space for your belongings or hobbies. The front porch welcomes you into the home, and the garden room offers a versatile area that can be used for various purposes, whether as a sunlit reading nook or a play area.

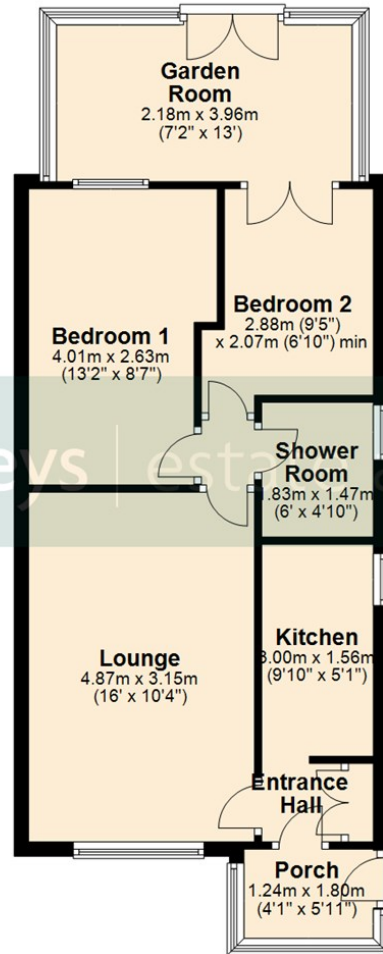
With no chain involved, this bungalow is ready for you to move in and make it your own. Whether you are looking to downsize, or seeking a peaceful place to call home, this property is a wonderful opportunity not to be missed. Come and experience the charm of this lovely bungalow in Rothwell. Call now to arrange your viewing.





Ground Floor

Approx. 54.8 sq. metres (589.4 sq. feet)



Total area: approx. 54.8 sq. metres (589.4 sq. feet)

These details are for guidance only and complete accuracy cannot be guaranteed. If there is any point, which is of particular importance, verification should be obtained. They do not constitute a contract or part of a contract. All measurements are approximate. No guarantee can be given with regard to planning permissions or fitness for purpose. No apparatus, equipment, fixture or fitting has been tested. Items shown in photographs are NOT necessarily included. Interested Parties are advised to check availability and make an appointment to view before travelling to see a property.



65 Commercial Street | Rothwell | Leeds | LS26 0QD
t: 0113 201 4040 www.emsleysestateagents.co.uk

Emsleys | estate agents