



Murray Way | Middleton | LS10 4GA

£249,000

Three bedroom mid townhouse | Council Tax Band D | EPC Rating TBC

Emsleys | estate agents

***STUNNING THROUGHOUT. UPDATED BATHROOM/ENSUITE/KITCHEN. SHOWER ROOM. ***

This beautifully refurbished property boasts three spacious bedrooms, making it an ideal home for families or those seeking extra space. With three modern bathrooms, including an en suite, convenience and comfort are at the forefront of this home's design.

As you enter, you will be greeted by a bright and inviting hall, with shower room and bedroom to the ground floor. The first floor has a large reception room, perfect for relaxing or entertaining guests. The heart of the home is undoubtedly the refurbished kitchen/diner, which features contemporary fittings and ample storage, making it a joy to cook and gather with loved ones.

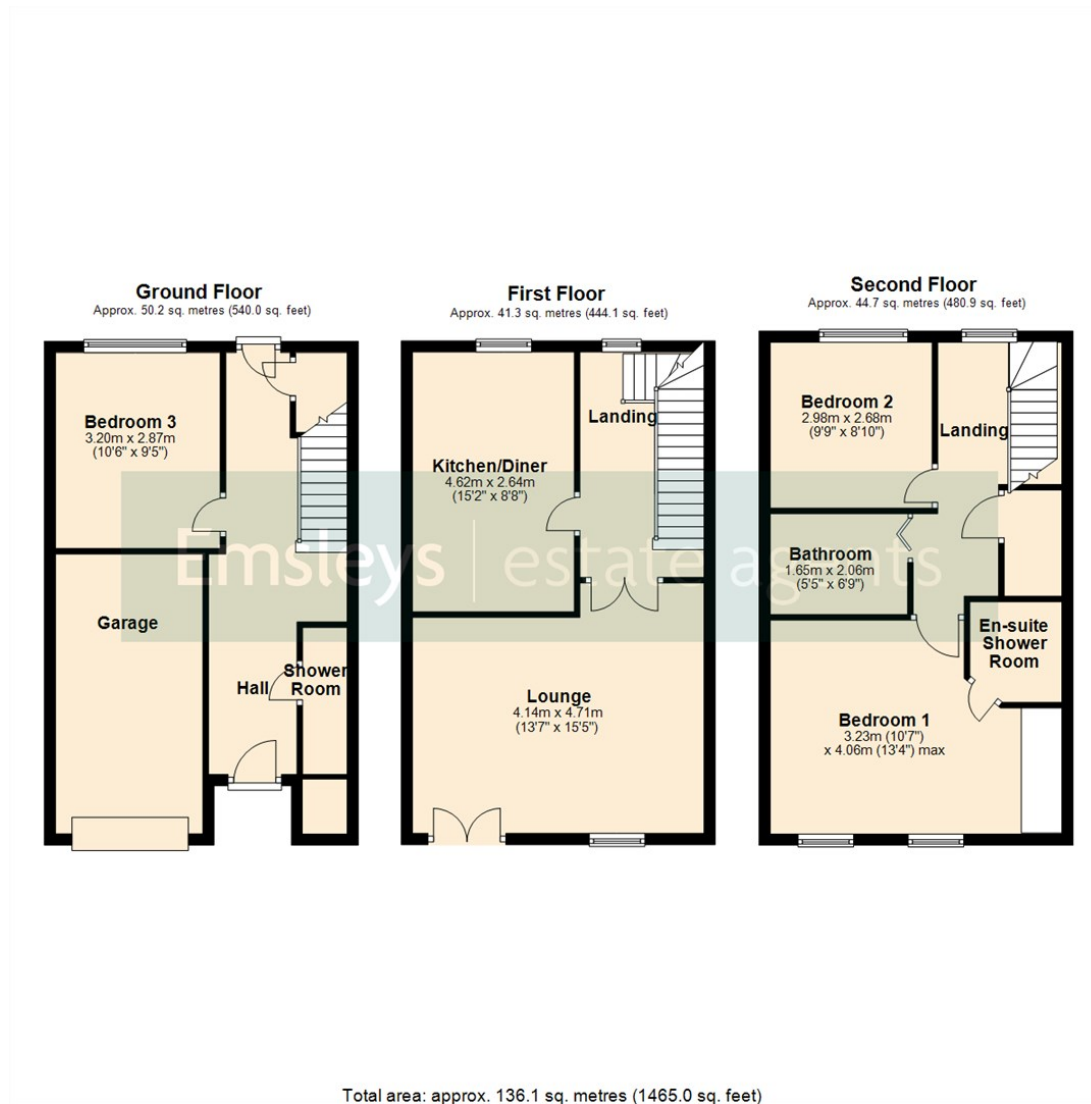
The property is stunning throughout, with tasteful decor and high-quality finishes that create a warm and welcoming atmosphere. The landscaped garden with patio and artificial lawn offers a serene outdoor space, ideal for enjoying sunny days or hosting barbecues with family and friends.

For those with vehicles, the property provides parking for up to three cars with an integral garage, ensuring that you will never have to worry about finding a space.

This mid-town house is not just a place to live, it is a wonderful home that combines style, comfort, and practicality in a desirable location. Don't miss the opportunity to make this exceptional property your own.







These details are for guidance only and complete accuracy cannot be guaranteed. If there is any point, which is of particular importance, verification should be obtained. They do not constitute a contract or part of a contract. All measurements are approximate. No guarantee can be given with regard to planning permissions or fitness for purpose. No apparatus, equipment, fixture or fitting has been tested. Items shown in photographs are NOT necessarily included. Interested Parties are advised to check availability and make an appointment to view before travelling to see a property.



65 Commercial Street | Rothwell | Leeds | LS26 0QD
t: 0113 201 4040 www.emsleysestateagents.co.uk

Emsleys | estate agents