



North Lingwell Road | Middleton | LS10 3SR

£255,000

Three bedroom semi-detached | Council Tax Band C | EPC Rating TBC

**Emsleys** | estate agents

**\*\*\*EXCEPTIONAL FAMILY HOME. POPULAR LOCATION. FANTASTIC GARDEN. CLOSE TO AMENITIES.\*\*\***

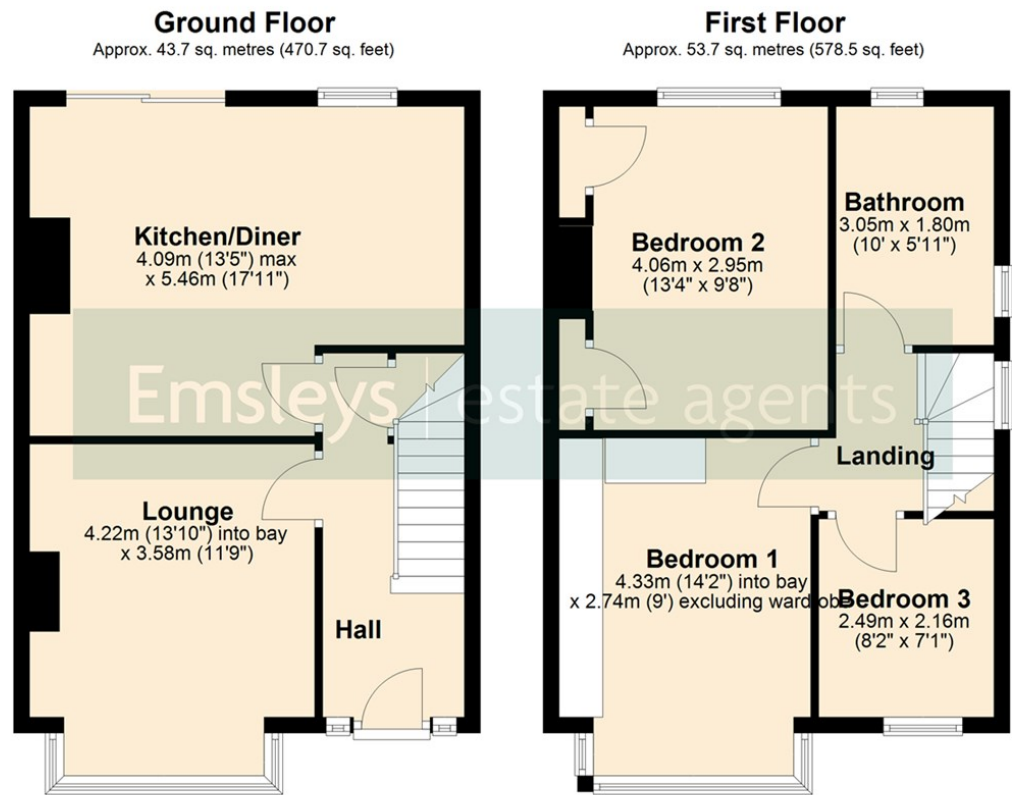
A delightful semi-detached house which offers a perfect blend of comfort and convenience. With three well-proportioned bedrooms, this property is ideal for families or those seeking extra space. The inviting reception rooms provides a warm and welcoming atmosphere, perfect for relaxing or entertaining guests, with an open plan modern fitted kitchen off the rear reception with wood burner to the fireplace.

The house features a well-appointed bathroom, ensuring that all your daily needs are met with ease. One of the standout features of this property is the ample parking space, accommodating up to two vehicles, which is a rare find in this area.

The location is particularly appealing, with easy access to local amenities, schools, and transport links, making it an excellent choice for both commuters and families alike. This semi-detached home presents a wonderful opportunity for anyone looking to settle in a vibrant community while enjoying the comforts of a spacious and well-designed living space. Don't miss the chance to make this lovely house your new home. Call now to arrange your viewing.







These details are for guidance only and complete accuracy cannot be guaranteed. If there is any point, which is of particular importance, verification should be obtained. They do not constitute a contract or part of a contract. All measurements are approximate. No guarantee can be given with regard to planning permissions or fitness for purpose. No apparatus, equipment, fixture or fitting has been tested. Items shown in photographs are NOT necessarily included. Interested Parties are advised to check availability and make an appointment to view before travelling to see a property.

65 Commercial Street | Rothwell | Leeds | LS26 0QD  
t: 0113 201 4040 www.emsleysestateagents.co.uk

